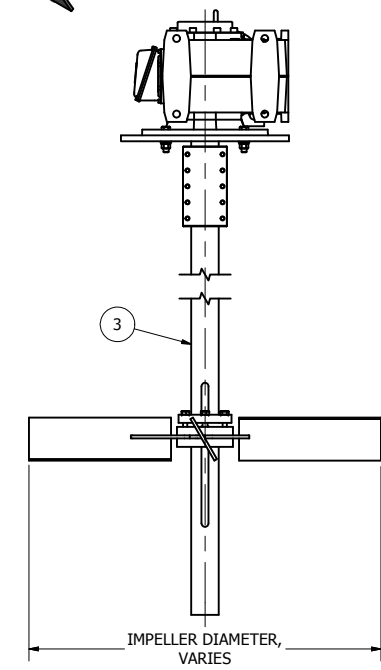
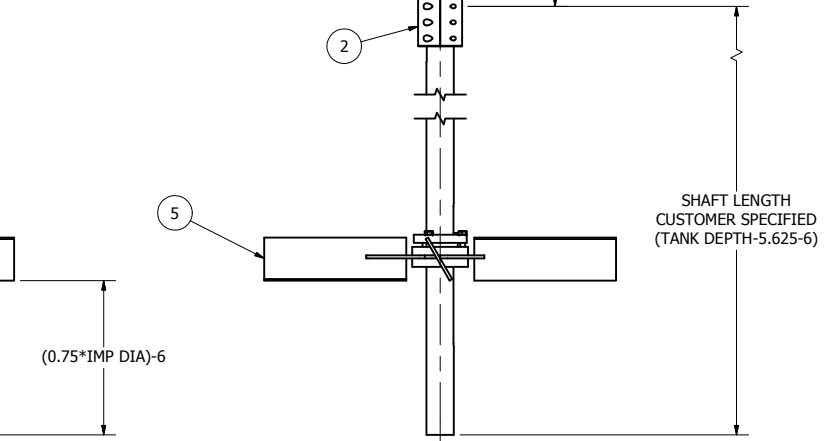
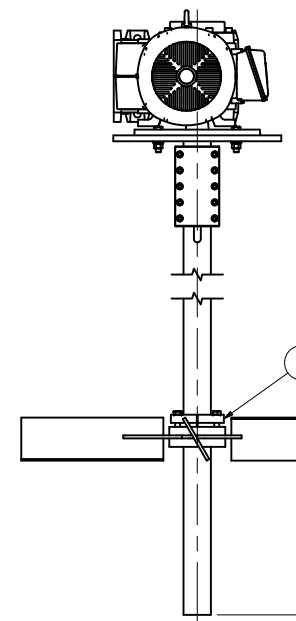
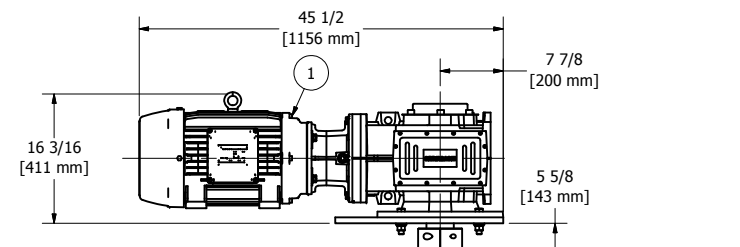
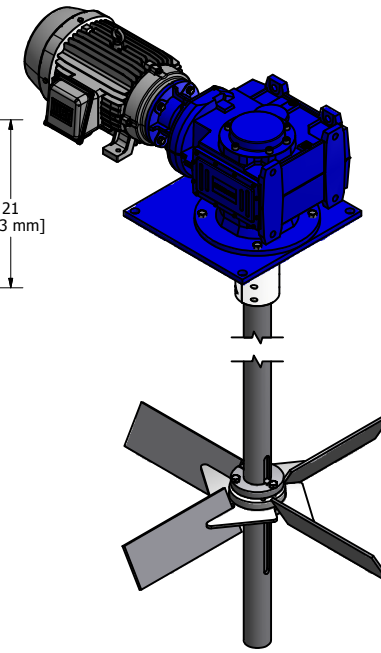
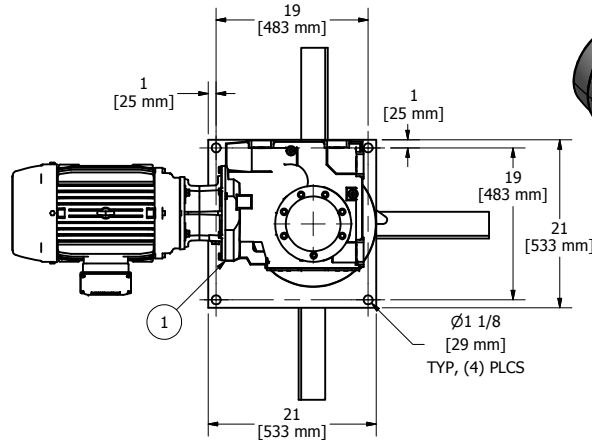


TABLE 1: DRIVE OPTIONS	
PART NUMBE	DESCRIPTION
LPM2A20-460	20 HP LOW PROFILE DRIVE WITH 20 HP 1750 RPM, 256TC FRAME, 230/460 V, 60 HZ, TEXP MOTOR.
LPM2A20-575	20 HP LOW PROFILE DRIVE WITH 20 HP 1750 RPM, 256TC FRAME, 575 V, 60 HZ, TEXP MOTOR.
LPM2A15-380	15 HP LOW PROFILE DRIVE WITH 15 HP 1450 RPM, 256TC FRAME, 190/380 V, 50 HZ, TEXP MOTOR.

TABLE 2: IMPELLER OPTIONS	
PART NUMBER	DESCRIPTION
40CI	40" DIAMETER CANTED IMPELLER
42CI	42" DIAMETER CANTED IMPELLER
44CI	44" DIAMETER CANTED IMPELLER
48CI	48" DIAMETER CANTED IMPELLER



**NOTES:**  
 1. APPROXIMATE DRIVE WEIGHT IS 825 LB (375 KG).

PARTS LIST			
ITEM	QTY	PART NUMBER	DESCRIPTION
1	1	-	SEE TABLE 1
2	1	3.4375CTX	CLAMP FOR 3 7/16" SHAFT
3	1	3.4375-S	BAR, ROUND 3 7/16" DIA. CUSTOMER TO SPECIFY LENGTH
4	1	TYPE F 3.4375	BUSHING, 3 7/16" BORE QD TYPE F
5	1	-	SEE TABLE 2

DRAWN	LG	7/27/2010
CHECKED		
QA		
MFG		
APPROVED		

**PSI** 7519 Prairie Oak Dr  
Houston, TX 77086  
281-893-4774  
281-893-1027 FAX

TITLE  
**GENERAL ARRANGEMENT, M2A20 AT 60 HZ  
 AND M2A15 AT 50 HZ**

SIZE: C DWG NO: GA11385 REV:   
 SCALE: SHEET 1 OF 1