



Grafton Chamber of Commerce & Industry Newsletter

CONTACT Email : office@GraftonChamber.org.au

February 2011

Diary Dates

"10 Big Ideas" Bus visits Grafton

Monday 7th February 4.30 -6.00 pm
All welcome to meet and discuss
The Clocktower Hotel BBQ courtyard
Prince St, Grafton ([see page 5](#))

Networking The Clarence

Wed 9th February 5.30 -7.15 pm
All Welcome *RSVP* \$5.00
The Lawrence Golf Club
Contact CBEAS (Jamie) on 6642 9700
or email projects@cbeas.org.au for
more info. Transport available.

Chamber Breakfast

Wed 16th February 7.00 am
All welcome \$15 members, \$18 non members
Guest Speakers and Networking
Victoria's Restaurant
The Quality Inn, Fitzroy St Grafton

Next Chamber Meeting

Wed 23rd February 5.30 pm
All members welcome
Caringa Enterprises room
Through St, South Grafton

Grafton Events

Pro Wake Board Contest
Prince St Riverside
March 18th and 19th
Bridge to Bridge Ski Race
Sunday March 20th
Prince St, Grafton ([see page 6](#))

News and Features Summary

Click on the links to bring up additional news held on our website.

Thanks to the Grafton Business Community The Chamber would like to extend our sincere thanks to the many businesses who have assisted other local businesses and people in post-flood recovery. Unfortunately, many local agricultural and tourism businesses have suffered loss and damage that will take some time to repair, while many local industries including contractors and transport will continue to suffer loss of income for many months. We urge all local people to think local, and support our local businesses where possible. The NSW Business Chamber has also supported us through our affiliation with grants for affected members. ([see page 5](#))

10 Big Ideas to grow Northern Rivers The NSW Business Chamber and regional chambers and bodies have developed a 10 point plan to grow this region. ([see page 5](#))

Also in this Newsletter

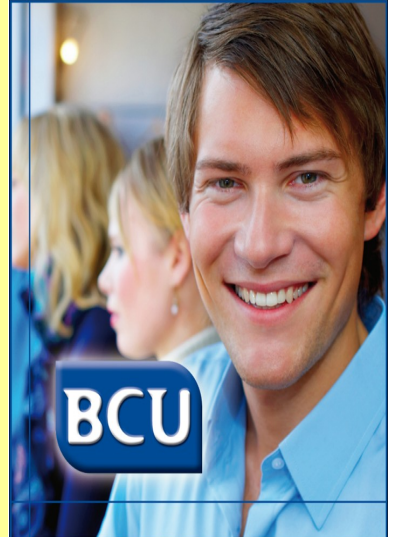
[Bridge Survey Closes 8th Feb—new updates and information](#)

[Is your business flood prepared?](#)

[CV Police Officer of the year award Nominations open](#)

[Aus Innovations Call to Businesses](#)

[Newsletter Advertising](#)



Business loans that come to you

- ▶ Business loans up to \$7 million*
- ▶ Our lenders are available after hours and on weekends at a time and location that suits you
- ▶ Local knowledge and experience
- ▶ Fast, easy, convenient
- ▶ Applications processed locally

And...BCU's loyalty rebate program may save your business big dollars! The more banking you do with BCU, the more you save.

1300 228 228

www.bcu.com.au

Let's talk banking

*Loans available to approved applicants only. Terms and conditions apply. Interest rates, fees and charges are payable and are subject to change without notice. For full terms and conditions of BCU's loyalty rebate program, see BCU's Fees and Charges Schedule. Bananacoast Community Credit Union Ltd
ABN 50 087 649 750 AFSL No. 241077. 07254/0807

Andersens
THE RESPECTED NAME IN FLOOR COVERINGS

yooahoo
web & graphic design



Grafton Chamber's

Activities and Events

From the Presidents Desk...

Welcome to February! The first month of the year has already passed, and what a start to the year! My words in the last newsletter indicated that at that time, we had escaped the horrors of the Queensland floods but we were on flood watch. As time showed, we did not miss out, and once again the mighty Clarence was in flood, our city inundated and we all had concerns about how high it would get.

Whilst we have suffered, our hearts must go out to Queensland and Victoria, and most recently, to the far north of Queensland ravaged by the recent cyclone.

Unfortunately, none of us is spared and we will be in for a tight time. The impacts are already being felt in the grocery stores and this is bound to get worse as the effects of the cyclone are felt.

It certainly is difficult here in Grafton and many businesses are doing it tough. Lack of visitors, a downturn in our economy and natural disasters all combine to make this a difficult time.

I guess we were luck in the city in that our businesses were not under water, but it reinforces the need to be prepared and have a flood plan, both for the individual businesses, but also for the City, and the Chamber will be meeting with Council and the relevant

authorities to ensure that a flood plan is prepared and distributed to all businesses in the city. It has been many years since water entered Grafton, but we cannot have a sense of complacency. It is a very real threat that will happen again.

Whilst businesses were not inundated, they have still suffered economically, with a downturn in trade and this is likely to continue over a period of time. If any businesses are finding it tough and do not know where to turn, please contact the Chamber. Whilst we do not have any magic solutions, we may be able to point people in the right direction.

There were a number of businesses that were directly affected, mainly in the rural area. To any of those businesses, it is worth checking with Centrelink in relation to their Ex-gratia Disaster Income Recovery programme. It is also worth contacting NSW Industry & Investment to find out about their flood assistance and advice. Visit the Recovery Centre in Prince Street, or contact the Chamber for advice.

There are many backyard weather experts who are predicting further flooding. It is not out of the question, but we must look forward. Let us hope the year brightens up from here.

Jeremy Challacombe, President.
Grafton Chamber Commerce & Industry

Grafton Chamber of Commerce & Industry

Office : PO Box 502, Grafton 2460

Ph (02) 6642 6183 Fax (02) 6642 1272

Executive Officer

James Patterson Mob/Txt 0457 768 641

EXECUTIVE COMMITTEE

Jeremy Challacombe	
(President)	6642 3336
Noel Smith	
(Vice President)	6643 5551
Janet Ocholla	
(Secretary)	6642 6183
Glenn Thompson	
(Treasurer)	6642 7555
Ray Chesher	6642 6183
Alan Masson	6640 3089
Sandy Stewart	0411 845 290
Cllr Craig Howe	0418 845 201
(Council Representative)	

NEWSLETTER ADVERTISING

Banner Ad (19 x 2cm)	\$ 40 per month
1/8 page (9cm x 6cm)	\$ 50 per month
1/4 page (19cm x 6cm)	\$ 90 per month
1/2 page (19cm x 12cm)	\$160 per month

All copy and artwork must be received before the **2nd of the month**. Any member interested in advertising in the newsletter [email](#) or phone the Chamber on **6642 6183**

Is your business flood prepared?

The Grafton Chamber of Commerce would urge all businesses, particularly those in the flood prone areas of Grafton and South Grafton to prepare a Flood Plan for their business. During recent threats, many businesses were asking other businesses what should they do - at a time of crisis this can lead to mistakes or errors of judgement.

As a general rule, two types of flood risks could occur in Grafton CBD. Water could flow over the levy and then stop once the river level drops again below the levy. The second risk is where the levy breaks whilst the river is in flood - water will continue to flood in despite the level dropping below the remaining levees. The risk of levy damage or breakdown will increase during floods due to water pressures.

A recent report indicated that levees can instil a level of complacency within a protected community. Continued success of the levee system may mean businesses will unlikely be prepared for an emergency when a crisis occurs. This adds to the danger and risks during evacuation. Businesses unprepared may also expect to have more damage to building and stock, higher costs and a longer recovery time.

The Grafton Chamber of Commerce and Industry would urge all businesses in flood prone areas to prepare a plan for your business that you will enact at time of emergency. This plan would include who to contact to assist you to prepare for evacuation, what steps you will need to take (sandbags, stock moving, feeding, truck hire) and what river level and rising speed would trigger you start enacting your plan. A small hair dresser may take less time than a department store to make safe its equipment or stock, so the department store would have an earlier trigger point to start its preparations.

Taking into account the amount of work you may have to undertake in a crisis may suggest that your business should be designed and stock displayed differently to support a quicker response (see Notaras preparations right).

Once your business has prepared for a flood event, will you continue to trade until a further trigger point? To where will you and your staff evacuate. How will you monitor the progress of river, flood advice and warnings and how will you contact everyone once an all clear is given.

The SES produces a very detailed guide to preparing for floods.

It covers the many aspects to consider and runs through step by step what will need to take place. They recommend that this is prepared with your staff, so that everyone is agreed and aware of the plan of action at a time of emergency, and that this plan be located in a number of places for future need and subsequent review and tweaking. Preparing a plan, especially in the region we live, not only makes good OH&S sense, but can reduce risk, damage and panic. It can also limit your financial loss and speed your reopening after the event.

ADDitUP

÷ × − + = BUSINESS SERVICES

The Fair Work Ombudsman spoke in Grafton the other day and advised everyone that Modern Awards are available in all industries. Sole Traders and Partnerships should start phasing these in from 1st Feb 2011, while other businesses entities should be phasing in since 1st July 2010. A whole raft of information, templates and awards details are available on www.fairwork.gov.au or phoning 13 13 94. Don't forget BAS for Oct to Dec 2010 are due 28th Feb 2010. For business service or advice contact me or see our website.

Sandy

Sandy Stewart JP

PO Box 488, GRAFTON NSW 2460

M. 0411 845 290

E. sandy@additupservices.com.au

W. www.additupservices.com.au

Notaras & Sons, South Grafton

Knowingly building on a flood plain may seem strange, however Notaras and Sons have ensured all essential buildings were built and additionally raised above 1 in 200 flood levels. All stock is raised also. So when the decision to prepare for an imminent flood was taken only four pieces of machinery were raised - the layout of the daily operations and storage has everything else already prepared. Post flood damage was therefore confined to water, mud and limited debris. Stock and operations were available to continue once the all clear was given



one cup's not enough..

to read through an edition of the
Clarence Valley Review

With over 100 community contributed
news and sports articles every week it's
the read of your life

Grafton-49 Queen St.
6642 8570
Yamba-126 Yamba Rd.
6646 9466

clarence valley **Review** *the leader in local news*
The Voice for Community Progress

Join and Support the Chamber Support YOU!

MEET YOUR EXECUTIVE TEAM



Alan Masson
National Australia Bank
Senior Partner Grafton
Business Banking Centre



Alan joined the Chamber Executive this season because he wanted to maintain a close contact on what is happening with

the local businesses. He is also on the Executive Board of Caringa Enterprises, which he believes is fantastic not for profit organisation working to improve & support the well being and lives of those in our community with extra needs. Alan and his wife Lisa have twin 7 year old girls and he enjoys Supa Oldies Soccer as well as cycling.

Most people know Alan as a senior Business Banking Partner at Grafton Business Banking Centre. He has worked for NAB for 24 years starting in Newcastle and working up and down coast during the time. The Grafton NAB Business team has 2 Business Bankers and two full time Agri Bankers as well as 3 support officers. The recent crisis saw a number of clients who have had infrastructure and cashflow affected and Alan and the team believe communication and looking to each clients needs individually will maintain their client partnership through the good times and bad, in order to work around any issues that arise.

The Chamber has been busy following up within the community after the recent floods. NSW Investment and Industry, NSW Business Chamber and the Centrelink Recovery team have been working with the Chamber to get information about assistance and support out to the wider community. We will be hosting a number of seminars about such assistance.

The next Chamber Breakfast will be at Victoria Restaurant in Fitzroy St. Following December's breakfast format, we will have a number of speakers including Youth Directions, Robert Sedger of the Office Fair Trading and other local business people. Breakfast starts at 7 am. Members \$15 and Non members \$18.

The NSW Business Chamber have launched a call for regional investment to co-incide with the state elections—10 Big Ideas for Northern Rivers. The Bus, with CEO Stephen Cartwright will visit Grafton on Monday 7th Feb between 4.30 and 6 pm at the Clocktower Hotel (BBQ Courtyard). All welcome to join the NSW Business Chamber for a drink and a chat.

**WELCOME to our
newest or returning
members**

Simpli Sushi
**Priority One Financial
Group**
**Big River Holiday Park
and Ski Lodge**
Glenwood Caravan Park

**5 reasons to join
the Grafton
Chamber of
Commerce & Industry**

Chamber Membership Drive. "Bring a Friend"

Every Member who introduces a new member in February will receive a free 1/4 page advertorial in the Chamber newsletter in the month of your choosing during 2011!. NEW members can receive membership to the end of June 2011 for only \$60. Email James for more information



Telstra Store Grafton is moving!

**Come & see us in our new store mid February—opposite Target in
Grafton Shoppingworld, or call on 6642 8488**



mazda

**Ken Casson
Motors**

**37-39 Turf St
GRAFTON**

**Phone
6642 6666**

**WWW.
kencasson
.com.au**



HOLDEN



Coffs Harbour Car Rally

9/10/11th Sept 2011

Click on above for updates and information about this event



Grafton Bridge Survey closes soon

The RTA advises that new information regarding the additional crossing of the Clarence River at Grafton has been uploaded on the project website.

The website contains information about an additional staffed display to be held on Thursday 3 February 2011, upcoming telephone survey and a published summary of comments and issues raised before the release of the December 2010 community update. The summary of community discussions February 2010 to November 2010 can be found on the website on the 'Public Information' page under 'Studies and Reports'.

For more information please visit the project website www.rta.nsw.gov.au/graftonbridge or the toll free information line 1800 633 332.

NSW Business Chamber

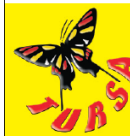
Grants assist local business in post flood recovery.

Three local businesses and members of the Grafton Chamber who suffered damaged infrastructure have been supported with grants from the NSW BC of up to \$4,000. As one local business affected said, "We really appreciate all your help, it is good to know that someone is there to help in these times." Other members who might need financial assistance in recovery to replace infrastructure not covered by insurance should contact [James at the Grafton Chamber](#).

10 Big Ideas Bus in Grafton Monday 7th

The NSW Business Chamber Campaign Bus will be travelling around NSW to gather support and momentum for our 10 Big Ideas to Grow NSW campaign. The bus will be accompanied by NSW Business Chamber CEO, Stephen Cartwright.

The Bus will be at the Clocktower Hotel, Prince St Monday 7th Feb between 4.30 pm and 6 pm. Let us shout you a drink!



Tursa Employment & Training

Your Regional Employment & Training Services Provider

Need Staff? Need Work?

call 1800 670 914

Need Training?

call 1800 266 425

www.tursa.com.au

YAMBA 22 Coldstream Street

Ph. (02) 6646 1568 Fax (02) 6646 1757

Email: tursa.yamba@tursa.com.au

MACLEAN 48 River Street

Ph. (02) 6645 5111 Fax (02) 6645 5979

Email: tursa.maclewan@tursa.com.au

GRAFTON 92 Fitzroy Street

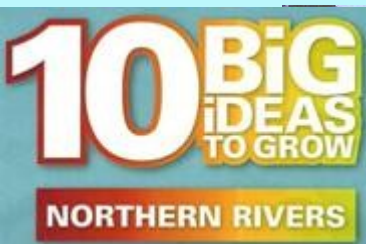
Ph. (02) 6643 5200 Fax (02) 6643 3500

Email: tursa.grafton@tursa.com.au

NO FEES!

Job
Services Australia
people • skills • jobs

AN AUSTRALIAN GOVERNMENT INITIATIVE



The Aus Innovation Festival May 2011. Call to Businesses

Is your business innovative? Have you developed creative responses in production, service or delivery? Do you feel you have something that should be shared with other Businesses or the Community?

The Australian Innovation Festival runs from April 26th to May 31st and offers your business the opportunity to showcase your innovations and creativity to a wider audience. National recognition means that your business or product is promoted across Australia—and whether you reach out to school children, business students or CEOs of peer businesses—you can present your message and achievements on a wider stage. If you would like to hold an open day, product launch, fashion parade or industry tour during this period, go to www.ausinnovation.org and register your event for 2011.

Clarence Valley Police Officer of the Year Award

Nominations



In conjunction with the local Police command, the Rotary Club of Grafton is inviting nominations for its annual Clarence Valley Police Officer of the Year Award.

This award is to recognise officers stationed within the Clarence Valley who have displayed meritorious, professional and excellent performance in their work as serving NSW Police Officers. Officers working from Copmanhurst, Grafton, Iluka, Lawrence, Maclean, Nymboida, Ulmarra and Yamba stations are eligible for nomination.

Nominations should be sent to the Secretary, Rotary Club of Grafton, PO Box 146, Grafton, NSW, 2460. Please provide some information about why the police officer deserves to win the award. Nominations close on Friday, 4th March and the award will be presented at a formal dinner on the evening of Monday 21st March. Members of the public are very welcome to attend the award dinner.

Fair Work and ACL Legislation Workshops available.

Changes and phasing in due to the Fair Work and Aust Consumer Laws mean local businesses need to keep abreast or risk fines. The Grafton Office Fair Trading, the Fair Work Ombudsman, (should there be sufficient interest), and NORBEC are offering local businesses workshops on Fair Work and the Australian Consumer Legislation. Businesses should look through the extensive material available on www.fairwork.gov.au or Ph 13 13 94 or local OFT's Robert Sedger on 6641 0900 for one to one advice for businesses on ACL laws. You can hear more about this at the next Chamber Breakfast at Victorias Restaurant on 13th Feb starting 7 am. Chris Thompson of NORBEC is also organising workshops this year for new and existing business in these areas. Contact NORBEC on 6622 1933 for more information.

CHESSE

employment & support services

CHESSE Employment and Support Services can find you the right person and support you with their start up wages (up to six months) Conditions Apply. CHESSE also helps the worker and the employer with: Work gear, Clothing, Work Tickets and On the Job Support if needed. Phone CHESSE for more information.



Grafton 6644 3222
Yamba 6646 8911

Yamba Business Waste Survey

A recent survey of Yamba businesses on waste gave the following information (59 responses):

- ♦ 95% recycle or reuse cardboard & paper
- ♦ 53% recycle or reuse recyclable containers
- ♦ 27% produce organic (food scrap) waste and of those businesses, 63% recycle some or all it locally
- ♦ 72% of businesses undertake other sustainable actions at work such as: supporting the 'Plastic Bag Free' campaign by offering alternatives or encouraging minimal plastic bag use; energy efficient lighting; minimising air conditioner use; and purchasing local fresh produce

Monster Energy Pro Wake Show and Bridge to Bridge Ski Race

The International Wakeboard Contest is returning to Grafton with eight of the world best Wake-boarders invited, including World Champion Dean Smith and US Pro Tour Champion Harley Clifford.

The Monster Energy Pro Wake Show postponed from January due to the floods will now be held March 18th with the main show on Saturday March 19 at Memorial Park Prince Street where gates will open from 3 pm. Sunday will see the re-running of the Grafton Bridge to Bridge Ski Race.

For more information visit www.prowake.com.au/show.



DIVE INTO WESTLAWN for PERSONAL LOANS for any worthwhile purpose.

Dreaming of a family holiday?
Or maybe a new boat or caravan?
How about a new computer or flat screen tv?

22 Queen St, Grafton - 6642 2022
26 Yamba St, Yamba - 6646 3686
www.westlawn.com.au



Westlawn
LOANS & INVESTMENTS INSURANCE FINANCIAL PLANNING

Welcome

For personal loans at competitive rates, contact your local Westlawn office today! Standard Terms & Conditions apply.