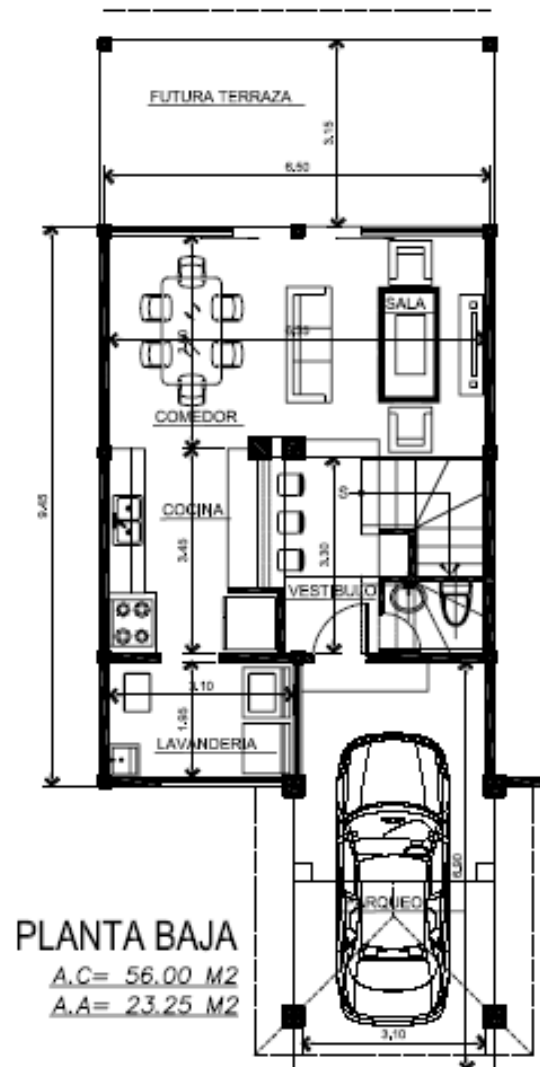


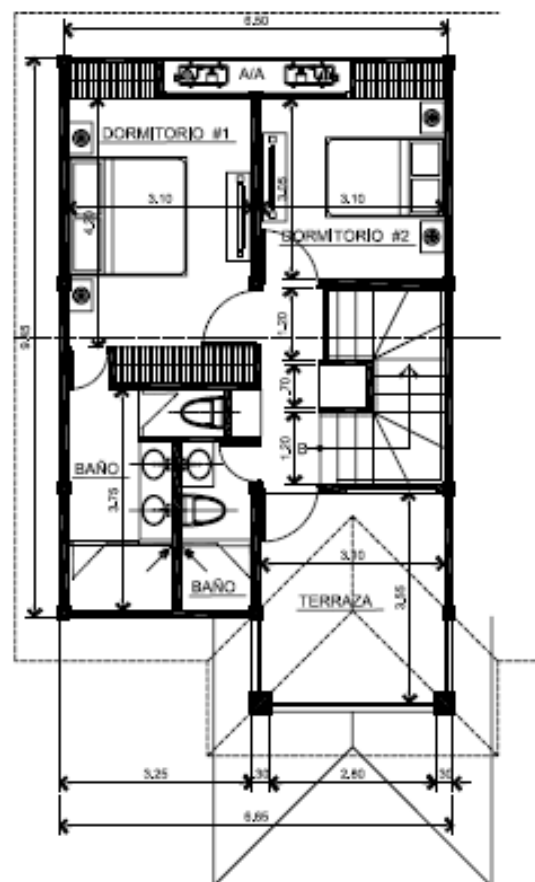
P.H. FLORES DE NATALIA



PLANTA BAJA

A.C= 56.00 M²

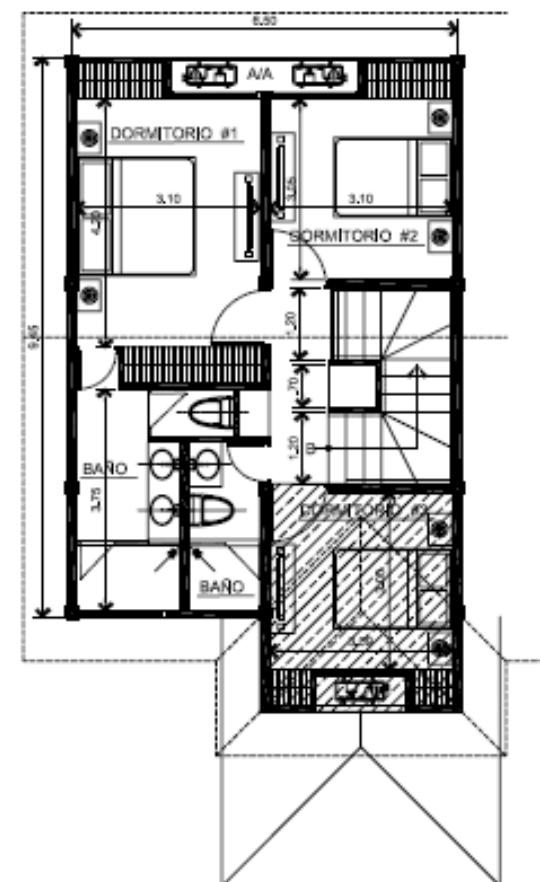
A.A= 23.25 M²



PLANTA ALTA CON TERRAZA

A.C= 56.00 M²

A.A= 12.25 M²



PLANTA ALTA 3 DORMITORIOS

PLANTAS DE ARQUITECTURA

ESC. 1/75

