

Archstone North Point Cambridge, Massachusetts



Brick Plays Pivotal Role in Smart Growth Strategy

Located at the intersection of Boston and Cambridge, Archstone North Point stands at the front edge of the emerging North Point neighborhood. The residential project choreographs green spaces, interior plazas, and pathways that link to public transportation. In its entirety, Archstone North Point supports a smart growth development strategy that has transformed a reclaimed industrial parcel into a lively new urban space.

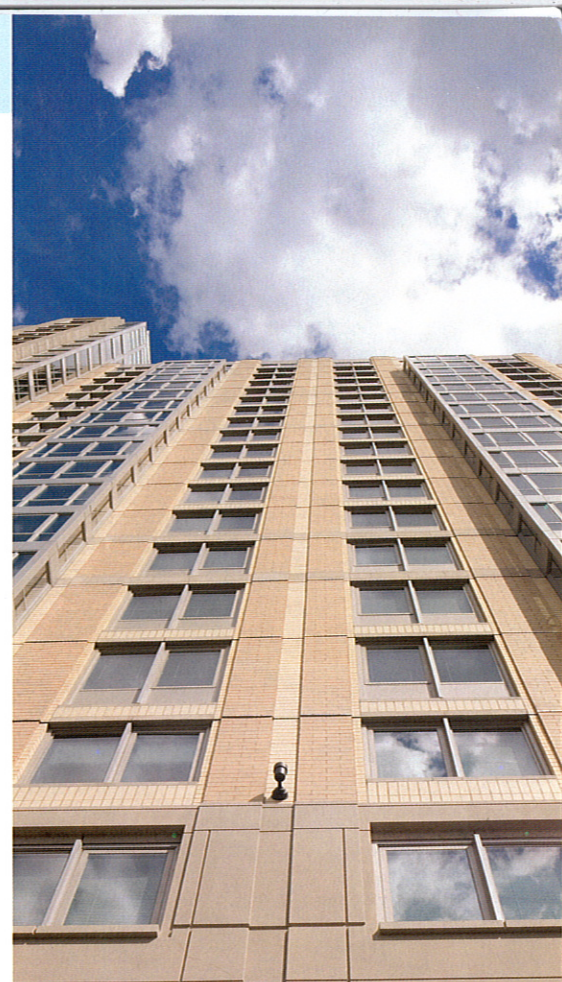
The architects at ADD Inc were challenged to create an iconic skyline element within the framework of a low-rise district with strict height and zoning regulations. To slenderize the resulting mass, designers elected to express details vertically. Materials—including a ribbed base and a vertical yellow brick skin—are heaviest at the base and grow lighter as the building rises. This hierarchy of elements, artfully interwoven at key transition points, accentuates the project's height and streamlined design.

The design team subscribes to the belief that every project benefits from sustainable design solutions. Accordingly, the team selected green materials such as bamboo flooring and cabinets, engineered ecoresin panels incorporating 40% post-industrial



reclaimed material, and low-emitting carpets and paints. Brick, which was locally sourced, was also used as a green material for the energy efficiency it provides, as well as for its durability. In the end, the use of brick ensures a long life for the building and requires minimal maintenance. With these efforts and others, Archstone North Point has met all of the City of Cambridge's requirements for LEED certification.

Thoughtful details and forward-thinking design have resulted in a landmark building for this Cambridge neighborhood. Its residents will further enjoy its amenities, while knowing the building has established the standard for future residential development in the evolving North Point community.



Brick was used as a green material
for the energy efficiency it provides,
as well as for its durability.



Architectural Firm:

ADD Inc

Principal:

Frederick A. Kramer, AIA

Brick Manufacturers:

Redland Brick

I-XL Industries, Ltd.

Brick Distributor:

Consolidated Brick &
Building Supply, Inc.

Mason Contractor:

Phoenix Bay State
Construction Company, Inc.

Craftworkers:

IUBAC Local 3 MA/NH/ME

Photographer:

Lucy Chen Photography
As verified by distributor

