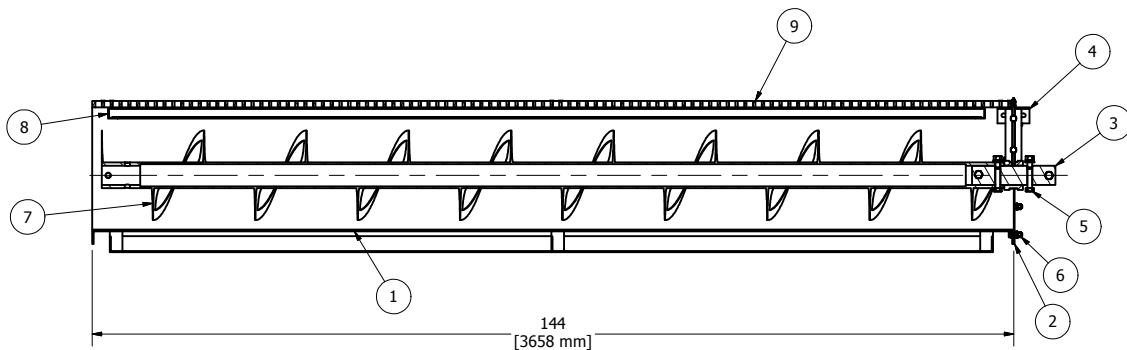
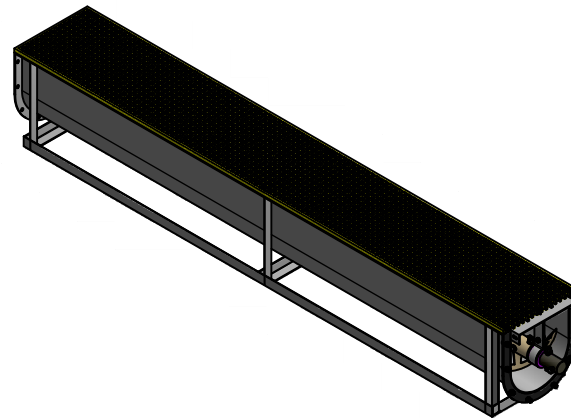
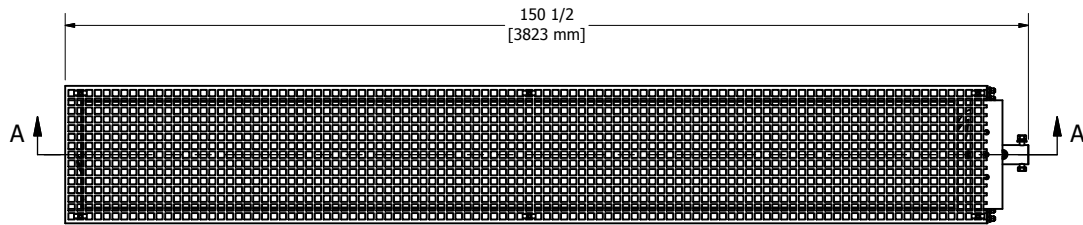
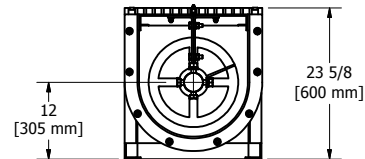


**GRP CLAMP ASSEMBLY**




**SECTION A-A**



PARTS LIST			
ITEM	QTY	PART NUMBER	DESCRIPTION
1	1	CTF167	TROUGH, 16" X 12' LG
2	1	16-CG	CONVEYOR GASKET, 16"
3	1	CC3-H	COUPLING SHAFT, 3"
4	1	CH162263	HANGER AND BEARING ASSEMBLY, 3"
5	4	075SCA	SHAFT CONNECTOR ASSEMBLY
6	8	050TCA	TROUGH CONNECTOR ASSEMBLY
7	1	16H61-RR	SCREW, 16" X 12' RIBBON
8	1	16 X 12-SG	SAFETY GRATING, 16" X 12' LONG
9	1	16 X 12 GRP	GRP GRATING, 16" X 12' LG
10	6	CLAMP	GRP CLAMP
11	6	.25 HHCS	HHCS, 1/4 X 1.25 LG, SST
12	6	.25 NUT	NUT, 1/4 SST

DRAWN	3/23/2010
Louis	
CHECKED	
QA	
MFG	
APPROVED	

 5119 Hiltonview Road Houston, TX 77086 281-893-4774 281-893-1027 FAX		
TITLE		
<b>ASSEMBLY, 16" X 12' SCREW CONVEYOR          MID SECTION</b>		
SIZE	DWG NO	REV
C	A11654	
SCALE	SHEET 1 OF 1	