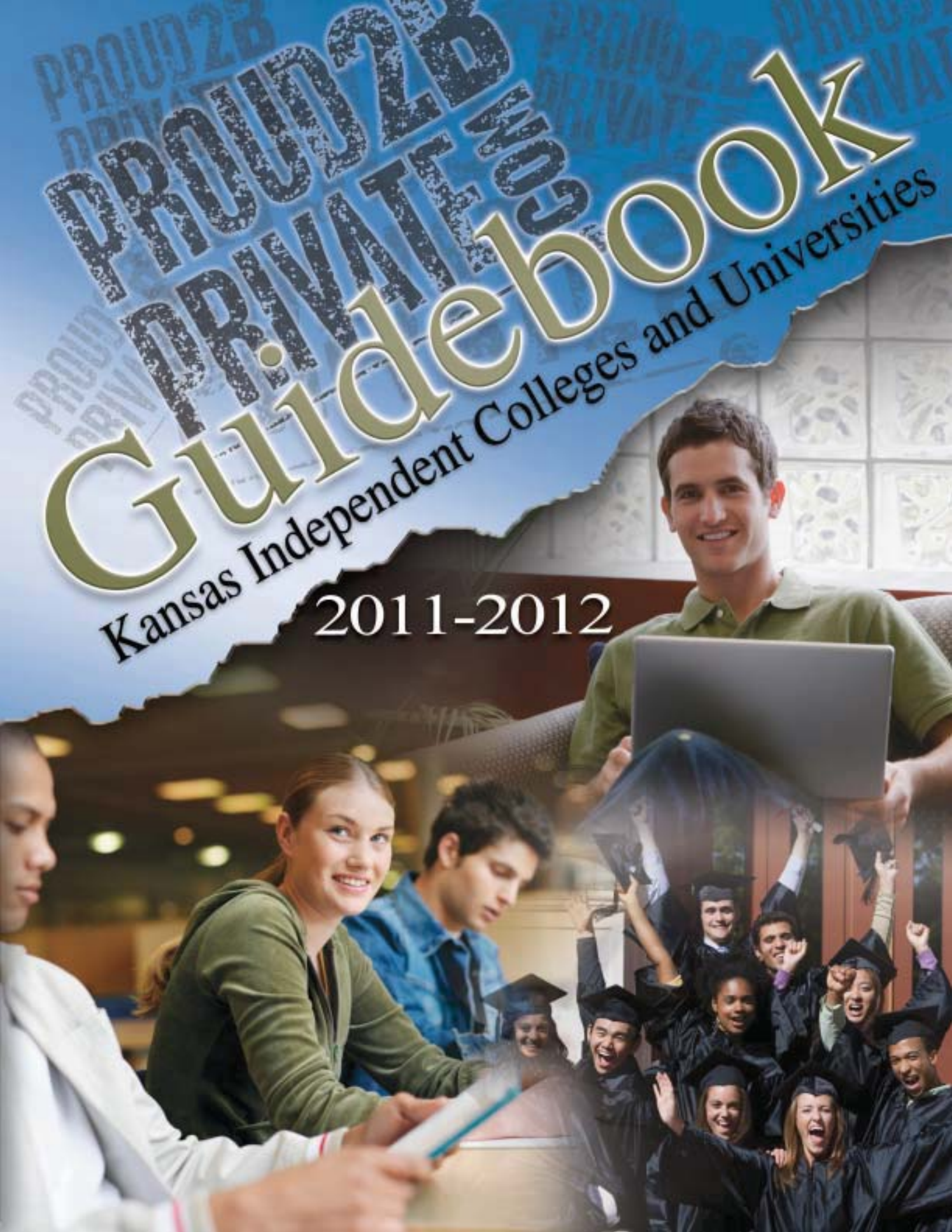


PROUD 2B PRIVATE

Guidebook

Kansas Independent Colleges and Universities

2011-2012



HIGH SCHOOL COUNSELORS

You know your students better than we do, and we value **your** opinion.



Proud2BPrivate.com is a website designed to profile Kansas' 18 private colleges and to help students and parents sort through the sometimes overwhelming evaluation and applications processes.

Baker University
Benedictine College
Bethany College
Bethel College
Central Christian College of Kansas
Donnelly College
Friends University
Hesston College
Kansas Wesleyan University
Manhattan Christian College
McPherson College
MidAmerica Nazarene University
Newman University
Ottawa University
Southwestern College
Sterling College
Tabor College
University of Saint Mary

Some students thrive at a state university. Others find the more personal setting of a private college the place to excel. We hope this interactive website will be a resource **you** can use in discussions with **your** students.

We'd like **your input!** Please visit www.Proud2BPrivate.com and tell us what we've done right and where we've missed the boat. We look forward to hearing from you. Please send your feedback to us by contacting Mark at 1-877-462-5729 or mark@kscolleges.org.

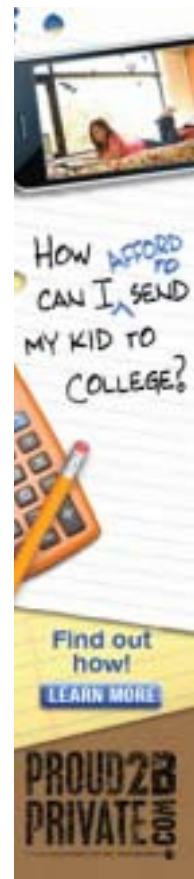


TABLE OF CONTENTS

The Kansas Private Colleges & Universities	2
Informational “Snapshot”	3
Profiles: The Kansas Private Colleges & Universities	4-21
College Goal Sunday, Events, & Visitation Days	22-27
Federal Financial Aid	28-30
State Financial Aid	31-35



The Kansas Private Colleges and Universities at-a-glance:

The 18 member Kansas independent (often referred to as “private”) colleges and universities of the Kansas Independent College Association (KICA) include sixteen four-year baccalaureate level institutions and two two-year associate level institutions. High school students preparing to choose the setting in which they will continue their education should be aware of these colleges and universities and the opportunities they provide for post-secondary educational study.

These institutions include the oldest university in the state; enrollments as small as 400 and as large as 4,000; and campuses in urban environments, suburban settings, medium sized towns, and small rural communities.

Profiles and Programs:

The profiles on pages 4 through 21 demonstrate the wide variety of programs offered by the 18 independent colleges and universities in Kansas. Most Kansas high school students exploring their college options will find their area of interest offered by one or more of these colleges: from *liberal arts* (history, art, math) to *health care* (nursing and athletic training) to *social service* (social work, ministry, non-profit leadership), to *business* (management and accounting) to *teaching* (elementary, secondary, and special education) to *pre-professional* (pre-law, pre-engineering).

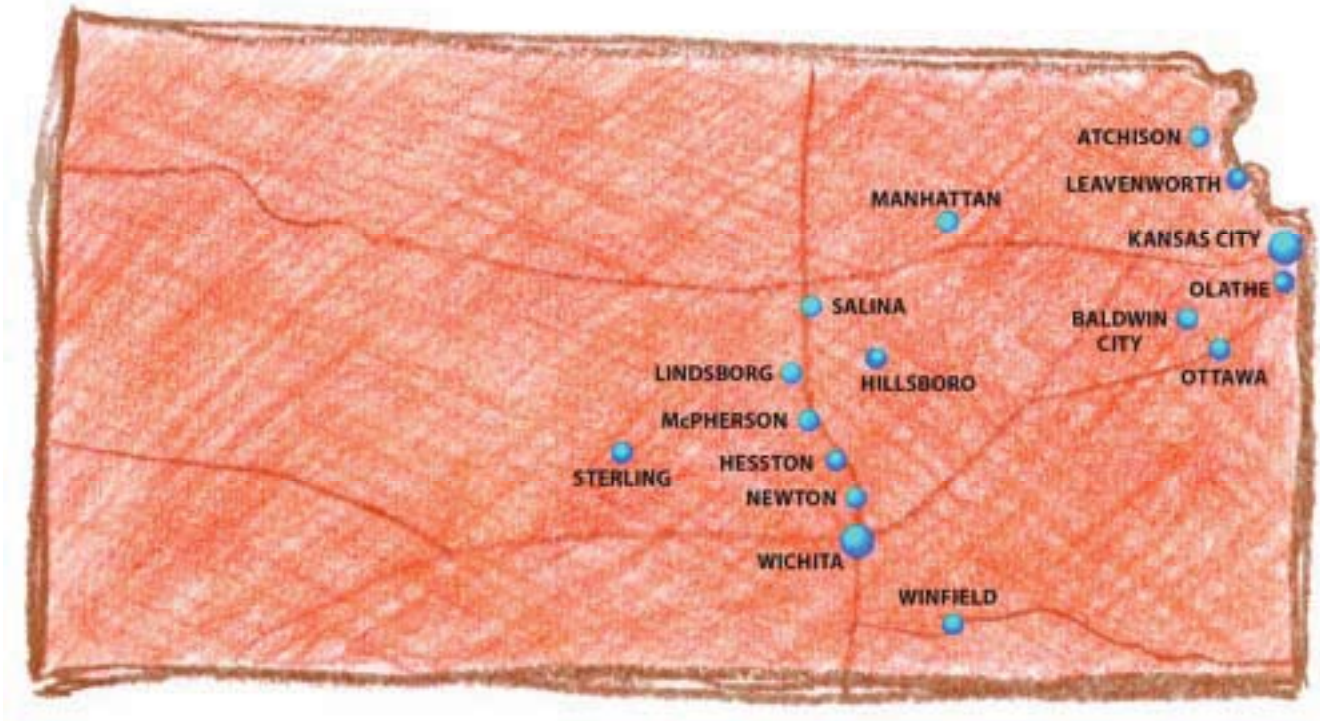
Perhaps the most important information on each profile sheet is the **contact information**—the individuals and offices that prospective students should contact to learn more about the colleges in which they have interest. The people listed on the profile pages will be eager to learn more about you and your interests and plans, to provide you with important information as you make your decisions about college, and to help you take the steps necessary to apply for admission and to qualify for financial aid.

The information in this guidebook can also be accessed online at www.Proud2BPrivate.com

The Kansas Independent Colleges and Universities Guidebook (August 2011, Volume #8) is published annually by the Kansas Independent College Association (KICA)
700 South Kansas Avenue Suite 622
Topeka, KS 66603
www.kscolleges.org

KICA, founded in 1976, is a 501 (c) (4) not-for-profit Kansas corporation

THE KANSAS PRIVATE COLLEGES & UNIVERSITIES



Baker University: BALDWIN CITY www.bakeru.edu

Benedictine College: ATCHISON www.benedictine.edu

Bethany College: LINDSBORG www.bethanylb.edu

Bethel College: NORTH NEWTON www.bethelks.edu

Central Christian College of Kansas: McPHERSON www.centralchristian.edu

Donnelly College: KANSAS CITY, KS www.donnelly.edu

Friends University: WICHITA www.friends.edu

Hesston College: HESSTON www.hesston.edu

Kansas Wesleyan University: SALINA www.kwu.edu

Manhattan Christian College: MANHATTAN www.mccks.edu

McPherson College: McPHERSON www.mcpherson.edu

MidAmerica Nazarene University: OLATHE www.mnu.edu

Newman University: WICHITA www.newmanu.edu

Ottawa University: OTTAWA www.ottawa.edu

Southwestern College: WINFIELD www.sckans.edu

Sterling College: STERLING www.sterling.edu

Tabor College: HILLSBORO www.tabor.edu

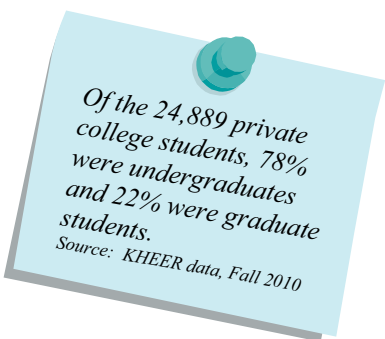
University of Saint Mary: LEAVENWORTH www.stmary.edu

INFORMATIONAL “SNAPSHOT”


FALL 2010: ENROLLMENT

- 14,185 **full-time** students
17% of the total in the state's 4-year public and independent colleges combined
- 10,704 **part-time** students
29% of the total in the state's 4-year public and independent colleges combined
- 24,889 **total** students
19% of the total in the state's 4-year public and independent colleges combined

Source: KHEER data, Fall 2010



Of the 24,889 private college students, 78% were undergraduates and 22% were graduate students.
Source: KHEER data, Fall 2010



Almost one in 5 of the state's 4-year college full-time undergraduate students is enrolled at a Kansas private college or university.

2008-2009: DEGREES

Numbers of students completing their degrees at a Kansas independent college:

- 3,894 **Bachelor's graduates**
21% of the Bachelor's level graduates of the state's 4-year colleges and universities
- 1,741 **Master's Graduates**
28% of the Master's level graduates of the state's 4-year colleges and universities

Source: IPEDS, 2008-2009 Degrees Survey

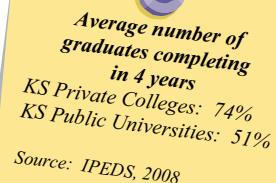
2010-2011: STICKER PRICE

Tuition and Fees

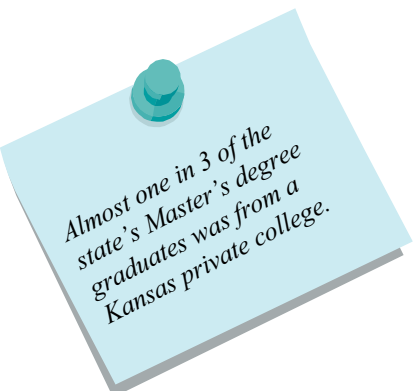
The average tuition or “sticker price” among the Kansas independent college and universities was:
\$19,033

The private college average tuition in Kansas was well below the national average of:
\$27,293

Sources: College Board, NAICU, and The Chronicle of Higher Education



Average number of graduates completing in 4 years
KS Private Colleges: 74%
KS Public Universities: 51%
Source: IPEDS, 2008



Almost one in 3 of the state's Master's degree graduates was from a Kansas private college.

2008-2009: “REAL COSTS”

Federal Grants: (e.g. Pell Grants)	\$4,141
State & Local Grants: (e.g. Comprehensive Grants)	\$2,676
Institutional Grants: (e.g. college scholarships)	<u>\$8,570</u>
Average Total Grant Aid Package:	\$15,387

Source: IPEDS, 2009 Student Financial Aid Survey



BAKER UNIVERSITY

FOUNDED 1858

The first university in Kansas, Baker has offered a high quality, private education since 1858. This highly reputable college consistently ranks among the top private schools in the Midwest by U.S. News and World Report.

OFFICE OF ADMISSIONS

8th and Grove
P.O. Box 65
Baldwin City, KS 66006
www.bakerU.edu

ADMISSIONS AND FINANCIAL AID INFORMATION

FAFSA Priority Date:	March 1
Application Deadline:	Rolling
Application Fee:	None
Director of Admissions:	Kevin Kropf
Phone:	(800) 873-4282
E-mail:	admissions@bakerU.edu
Director of Financial Aid:	Jeanne Mott
Phone:	(785) 594-4595
E-mail:	jeanne.mott@bakerU.edu

FALL 2010 ENROLLMENT STATISTICS

Full-time Undergraduate:	1,199
Part-time Undergraduate:	997
% Undergraduate Men:	44%
% Undergraduate Women:	56%
Avg. Freshman ACT score:	23.2
Avg. Freshman HS GPA:	3.4
Student to Faculty Ratio:	14 : 1

FALL 2010 FINANCIAL AID STATISTICS

% of Students Receiving Financial Aid:	95%
Avg. Financial Aid package for Freshmen with financial need:	\$21,510

COSTS FOR ACADEMIC YEAR 2011 - 2012

Tuition:	\$23,310
Required Fees:	80
Room and Board:	7,340
TOTAL:	\$30,730

MAJORS OFFERED

3 + 2 Engineering (with Kansas University and Washington University)
3 + 2 Forestry & Environmental Studies (with Duke University)
Accounting
Art Education
Art History
Biology with tracks in:
-Ecology and Evolution
-Molecular Bioscience
-Vertebrate Structure
Business
Chemistry
Communication with tracks in:
-Communication Studies
-Conflict Management
Computer Science with tracks in:
-Computer Information Systems
-Game Programming
Economics
Elementary Education
English with tracks in:
-Creative Writing
-Literature
Exercise Science
French
German
History
Health/Physical Education (Teacher Licensure)
International Business
International Studies
Mass Media with tracks in:
-Multimedia
-Public Relations
-Sports Information
Mathematics
Middle-level Education: (English, Math, and Science)
Music with tracks in:
-Instrumental
-Vocal
Music Education
Nursing (School of Nursing)
Philosophy
Philosophy/Religion
Physics
Psychology with tracks in:
-Biology
-Business
-Special Education
-Cultural Diversity
-Science, Research, & Communication
Religion
Secondary Education
Sociology with tracks in:
-Criminal Justice
-Public Psychology
Spanish
Sports Administration
Studio Art
Theatre

ACTIVITIES

8 on Eighth
Active Minds at BU
Alchemists
Alpha Chi Omega Sorority
Alpha Mu Gamma Honor Society (world language)
Alpha Psi Omega Honor Society (theatre)
Baker Ambassadors
Baker Art Club
Baker Anime Club
Baker Serves
Baker University Student Education Association
Cardinal Key Honor Society (juniors and seniors)
Chancery Pre-Law Society
Champions of Character
Collegiate Music Educators National Conference
Delta Delta Delta Sorority
Delta Mu Delta Honor Society (business administration)
Delta Sigma Pi
Delta Tau Delta Fraternity
Earth We Are Faith First
Fellowship of Christian Athletes
Gamma Sigma Alpha Honor Society (fraternity/sorority academics)
Gay-Straight Alliance
Greek Week Executive Council
Instrumental Ensembles
Interfraternity Council
Interhall Council
Kappa Alpha Psi Fraternity
Kappa Sigma Fraternity
Lambda Pi Eta Honor Society (communication)
Loud Noises Comedy Troupe
Math Nerds of Mulvane
Multicultural Greek Council
Mungano
National Society of Collegiate Scholars (freshmen and sophomores)
Omicron Delta Epsilon Honor Society (economics)
Order of Omega Honor Society (fraternity/sorority)
Panhellenic Council
ParMentor Organizaton
Peer Educators
Phi Eta Sigma Honor Society (freshmen)
Pre-Dental Club
Psi Chi Honor Society & Psychology Club (psychology)
Sigma Delta Pi Honor Society (Spanish)
Sigma Phi Epsilon Fraternity
Spanish Club
Speech Choir
Student Activities Council
Student Senate
Up 'til Dawn
Zeta Chi Fraternity
Zeta Phi Beta Sorority
Zeta Tau Alpha Sorority

ATHLETICS: NAIA Division II

Men's:	Women's:
Baseball	Basketball
Basketball	Bowling
Cross country	Cross country
Football	Golf
Golf	Soccer
Soccer	Softball
Spirit squad	Spirit squad
Tennis	Track and field
Track and field	Tennis
Wrestling	Volleyball



BENEDICTINE COLLEGE **FOUNDED 1858**

When you come for your visit to Benedictine, you find that a visit of a day will turn into a relationship of a lifetime. You will find a community of faith and scholarship deeply committed to our mission as a Catholic, Liberal Arts, Benedictine, and Residential School.

OFFICE OF ADMISSIONS

1020 North Second
Atchison, KS 66002
www.benedictine.edu

ADMISSIONS AND FINANCIAL AID INFORMATION

FAFSA Priority Date: April 1
Application Deadline: None
Application Fee: Free online
Dean of Enrollment Management: Pete Helgesen
Phone: (913) 360-7479
E-mail: bcadmiss@benedictine.edu
Director of Financial Aid: Tony Tanking
Phone: (913) 360-7484
E-mail: ttanking@benedictine.edu

FALL 2010 ENROLLMENT STATISTICS

Full-time Undergraduate: 1,504
Part-time Undergraduate: 291
% Undergraduate Men: 46%
% Undergraduate Women: 54%
Avg. Freshman ACT score: 23.8
Avg. Freshman HS GPA: 3.4
Student to Faculty Ratio: 14 : 1

FALL 2010 FINANCIAL AID STATISTICS

% of Students Receiving Financial Aid: 99%
Avg. Financial Aid package for Freshmen with financial need: \$16,923

COSTS FOR ACADEMIC YEAR 2011 - 2012

Tuition: \$21,475
Required Fees: 200
Room and Board: 4,398
TOTAL: \$27,480

MAJORS OFFERED

- Accounting
 - Art
 - Astronomy
 - Athletic Training
 - Biochemistry
 - Biology
 - Business Management
 - Chemistry
 - Computer Science
 - Criminology
 - Economics
 - Elementary & Secondary Education
 - Engineering
 - Chemical
 - Civil
 - Electrical
 - Mechanical
 - English
 - Finance
 - Foreign Language
 - French
 - History
 - International Business
 - International Studies
 - Liberal Studies
 - Mass Communications and Journalism
 - Mathematics
 - Music
 - Music Education
 - Natural Science
 - Nursing
 - Philosophy
 - Physical Education
 - Physics & Engineering
 - Political Science
 - Psychology
 - Social Science
 - Sociology
 - Spanish
 - Special Education
 - Theatre Arts
 - Theatre Arts Management
 - Theology
 - Youth Ministry
- Pre-Profession:**
- Dentistry
 - Engineering
 - Law
 - Medical Technology
 - Medicine
 - Nursing
 - Occupational Therapy
 - Optometry
 - Pharmacy
 - Physical Therapy
- Certifications:**
- Athletic Training
 - Teaching
 - Elementary Education
 - Secondary Education
 - Special Education

ACTIVITIES

- Alpha Mu Gamma
- Athletes in Training
- BC Ministry
- Black Monks Men's Rugby
- Black Student Union
- Celtic Music Club
- Chemistry/Biochemistry Club
- Communion & Liberation: University Students
- Criminology Club
- Daughters of the King
- Economics Club
- Education Club
- English Club
- Environmental Club
- FOCUS
- HALO
- Hunger Coalition
- International Club
- History Club
- Loomings
- Knights of Columbus
- Medical Explorers
- Phi Alpha Theta
- Psychology Club
- Ravens for Political Awareness
- Ravens Respect Life
- Republican Club
- BC ROTC
- BC Saints Women's Rugby
- SIFE
- Social Justice Club
- Spanish Club
- Sports Medicine Club
- The Circuit
- Theology of the Body
- Young Democrats

ATHLETICS: NAIA

- | | |
|-----------------|-----------------|
| Men's: | Women's: |
| Baseball | Basketball |
| Basketball | Cross country |
| Cross country | Soccer |
| Football | Softball |
| Soccer | Spirit squad |
| Track and field | Track and field |
| Wrestling | Volleyball |



BETHANY COLLEGE **FOUNDED 1881**

The mission of Bethany College is to educate, develop, and challenge individuals to reach for truth and excellence as they lead lives of faith, learning, and service.

OFFICE OF ADMISSIONS

335 East Swensson Street
Lindsborg, KS 67456
www.bethanylb.edu

ADMISSIONS AND FINANCIAL AID INFORMATION

FAFSA Priority Date: March 1
Application Deadline: Rolling
Application Fee: None
Dean of Recruitment & Marketing: Tricia Hawk
Phone: (800) 826-2281
E-mail: admissions@bethanylb.edu
Director of Financial Aid: Amber Maneth
Phone: (785) 227-3311
E-mail: manetha@bethanylb.edu

FALL 2010 ENROLLMENT STATISTICS

Full-time Undergraduate: 588
Part-time Undergraduate: 22
% Undergraduate Men: 51%
% Undergraduate Women: 49%
Avg. Freshman ACT score: 22.2
Avg. Freshman HS GPA: 3.3
Student to Faculty Ratio: 12 : 1

FALL 2010 FINANCIAL AID STATISTICS

% of Students Receiving Financial Aid: 99%
Avg. Financial Aid package for Freshmen with financial need: \$22,388

COSTS FOR ACADEMIC YEAR 2011 - 2012

Tuition: \$21,077
Required Fees: 600
Room and Board: 6,516
TOTAL: \$28,193

MAJORS OFFERED

Education
Art Teaching (PreK-12)
Biology Teaching (6-12)
Business Education Teaching (6-12)
Chemistry Teaching (6-12)
Elementary Education Teaching (K-6)
English Teaching (6-12)
Health & Phys. ED Teaching (PreK-12)
Mathematics Teaching (6-12)
Music ED/Instrumental (PreK-12) (B.M.E.)
Music ED Vocal (PreK-12) (B.M.E.)
Social Science Teaching (6-12)

Fine Arts
Art
-Pre-Professional Art Therapy
-Studio Art
-Visual Art Administration
Interactive Graphic Design (B.A.)
Music
-Performance with Emph. in Instrumental, Organ, Piano, & Vocal (B.M.)

Humanities
Christian Ministry
English
History-Political Science
Theatre and Communication Arts

Sciences
Biology
Chemistry
Forensic Science
Mathematics
Psychology
Social Sciences
Addiction Counseling
Accounting
Athletic Training
Business Administration
Business Economics
Criminal Justice
Finance
Management
Management w/conc. in Internl. Mngmt.
Marketing
Marketing with Network Marketing Emph.
Operations Management
Physical Health and Wellness
Political Science-History
Sports Management

Special Emphasis Groups:
BC BACCHUS
International Students Organization
Multicultural Student Union (MSU)
Ally Group

Departmental Organizations:
Art Club
Association of Music Students
Bethany College (AMSBC)
Bethany Student Education Association (BSEA)
Biology/Chemistry Club
Business Club
Creative Writing Club
History/Political Science Club
Law and Order Club
National Conference (CMENC)
Psychology Club
von Neumann Society

Music Ensembles:
Bethany College
Handbell Ensemble
Bethany College/Lindsborg
Community Orchestra
Bethany Choir
Bethany Oratorio Society
Blue Dozen Pep Band
Brass Ensemble
Chamber: Choir, Ensembles, & Strings
Choir: Chapel & Flute
Dixieland Band
Genesis Ringers
Jazz: Combo & Ensemble
Percussion Ensemble
Saxophone Quartet
Small Instrumental Ensemble
Symphonic Band
Voca Lejon Men's Vocal Ensemble
Woodwind Quintet

Professional/Scholastic Organizations:
Alpha Psi Omega (Theatre)
Beta Tau Sigma (Bethany)
Sigma Alpha Iota (SAI) (Music)
Lambda Iota Tau (English)
Order of Omega (Greek)
Tri-Beta (Science)
Psi Chi (Psychology)
Phi Alpha Theta (History)
Alpha Phi Sigma (Criminal Justice)

ATHLETICS: NAIA Division II

Men's:	Women's:
Baseball	Basketball
Basketball	Cheer Squad
Cheer Squad	Cross country
Cross country	Dance Team
Football	Golf
Golf	Soccer
Soccer	Softball
Tennis	Tennis
Track and field	Track and field
Wrestling	Volleyball

Campus Ministry:
Alpha Omega Christian
Men's Fellowship
Fellowship of Christian Athletes
Bethany Youth Ministry Teams
Chi Alpha Christian
Women's Fellowship
Peer Ministers
Knit Wits

Student Government:
Student Activities Board (SAB)
Student Congress (STUCO)
Greek Council (governing body for fraternities and sororities)

Service:
Blue Key
Habitat for Humanity
Gold Key
Green Team

Fraternities:
Alpha Sigma Nu
Alpha Kappa Omega
Gamma Kappa Alpha
Pi Sigma Chi

INVOLVEMENT OPPORTUNITIES

Sororities:
Alpha Theta Chi
Kappa Gamma Phi
Sigma Phi Omega
Alpha Delta Zeta

Publications:
The Bethanian
The Messenger

Bethel College

BETHEL COLLEGE

FOUNDED 1887

Bethel College, a Mennonite liberal arts college, offers academic excellence, opportunities for participation, faith-based values, and a caring community. Students can choose from 17 majors, 15 minors, and five certificate programs.

OFFICE OF ADMISSIONS

300 E. 27th Street
North Newton, KS 67117
www.bethelks.edu

ADMISSIONS AND FINANCIAL AID INFORMATION

FAFSA Priority Date:	April 1
Application Deadline:	August 15
Application Fee:	\$20
Vice President for Admissions:	Todd Moore
Phone:	(800) 522-1887
E-mail:	admissions@bethelks.edu
Director of Financial Aid:	Tony Graber
Phone:	(316) 284-5232
E-mail:	tgraber@bethelks.edu

FALL 2010 ENROLLMENT STATISTICS

Full-time Undergraduate:	457
Part-time Undergraduate:	19
% Undergraduate Men:	51%
% Undergraduate Women:	49%
Avg. Freshman ACT score:	23.4
Avg. Freshman HS GPA:	3.5
Student to Faculty Ratio:	11 : 1

FALL 2010 FINANCIAL AID STATISTICS

% of Students Receiving Financial Aid:	99%
Avg. Financial Aid package for Freshmen with financial need:	\$23,100

COSTS FOR ACADEMIC YEAR 2011 - 2012

Tuition:	\$22,600
Required Fees:	none
Room and Board:	7,160
TOTAL:	\$29,760

MAJORS OFFERED

Art
Athletic Training
Bible and Religion
Biology
Business Administration
Chemistry
Communication Arts
Elementary Education
English
Health and Phys. ED
History
Mathematical Sciences
Music
Natural Sciences
Nursing
Psychology
Social Work

*Many of these majors offer teacher licensure programs

ATHLETICS: NAIA Division II

Men's:	Women's:
Basketball	Basketball
Cross country	Cross country
Football	Golf
Soccer	Soccer
Tennis	Softball
Track and field	Track and field
	Tennis
	Volleyball

ACTIVITIES

Amnesty International
Bethel College KS Assoc. of Nursing Students
Catholic Student Organization
Cheerleading
Chess Club
Climbing Club
Clio (history club)
The Collegian (newspaper)
Collegiate Music Educators National Conference (CMENC)
Environmental Action Club
Fellowship of Christian Athletes
Forensics and Debate
German Club
Int'l Assoc. of Jazz Educators
International Club
KBCU-FM 88.1 (Bethel's radio station)
Math Club
Metaphysical Club (philosophy)
Multicultural Organization
Oxfam CHANGE Club
Philosophy Club
Pi Kappa Delta (forensics)
Pre-Health Professions Club
Pre-Law Club
Psychology Colloquium
Sappho (women's issues)
Service Corps
Student Activities Committee (SAC)
Student Alumni Association (SAA)
Student Community Action Network (SCAN)
Student Senate
Students for Social Change
Student Social Work Organization
Swing Dance Club
The Thresher (yearbook)
Ultimate Club
Wichita Black Nurses Association

Music:

Concert Choir
Men's Ensemble
Women's Ensemble
Chamber Orchestra and Wind Ensemble
Jazz Ensembles
Music Theater and Opera

Intramurals:

3-on-3 or 5-on-5 basketball
Badminton
Cardio-kickboxing
Fantasy football
Flag football
Foosball
Golf
Martial arts
Ping pong
Pool
Racquetball
Softball
Tennis
Ultimate Frisbee
Volleyball
Wiffleball
Yoga

Spiritual Life:

Chapel
Student Chaplains



CENTRAL CHRISTIAN COLLEGE OF KANSAS FOUNDED 1884

Christ-centered education for Character committed to developing fit hearts, minds, bodies, and souls in students.

OFFICE OF ADMISSIONS

1200 South Main
P.O. Box 1403
McPherson, KS 67460
www.centralchristian.edu

ADMISSIONS AND FINANCIAL AID INFORMATION

FAFSA Priority Date: April 1
Application Deadline: Rolling
Application Fee: \$20
Director of Admissions: Rick Wyatt
Phone: (800) 835-0078 ext. 337
E-mail: Rick.Wyatt@centralchristian.edu
Director of Financial Aid: Mike Reimer
Phone: (800) 835-0078 ext. 333
E-mail: Mike.Reimer@centralchristian.edu

FALL 2010 ENROLLMENT STATISTICS

Full-time Undergraduate: 314
Part-time Undergraduate: 204
% Undergraduate Men: 52%
% Undergraduate Women: 48%
Avg. Freshman ACT score: 20.6
Avg. Freshman HS GPA: 3.3
Student to Faculty Ratio: 12 : 1

FALL 2010 FINANCIAL AID STATISTICS

% of Students Receiving Financial Aid: 99%
Avg. Financial Aid package for Freshmen with financial need: \$18,884

COSTS FOR ACADEMIC YEAR 2011 - 2012

Tuition: \$18,100
Required Fees: 300
Room and Board: 6,200
TOTAL: \$24,600

MAJORS OFFERED

- Accounting
- Business Management
- Communication
 - Communication
 - Mass Communication
- Elementary Education
- Secondary Education
- English
- Exercise Science
- General Ministry
- History
- History/Gov't Education
- Music
 - Church Music
 - Contemporary Christian Music
 - General Music
 - Performance
- Natural Science
- Biology
- Chemistry
- Health Science
- Mathematics
- Organizational Leadership
- Physical Education
- Psychology
- Christian Counseling/Family
- Clinical/Developmental
- General
- Organizational
- Pastoral Ministry
- Small Business Management
- Social Science
 - Criminal Justice
 - Family Studies
 - Political Science
 - Sociology
- Sports Management
- Worship Arts
- Youth Ministry
- Liberal Studies with concentrations in:
 - Aviation
 - Business
 - Communications
 - Humanities
 - Ministry
 - Science/Mathematics
 - Social Science
 - Sports Medicine
- Pre-Professional
 - Dentistry
 - Law
 - Medicine
 - Physical Therapy
 - Veterinary Medicine
- Unique Programs
 - Aviation
 - Contemporary Christian Music
 - Criminal Justice (Associates Programs
 - Pre-Nursing
 - Pre-engineering

ACTIVITIES

- Clubs:**
- College Republicans
 - English Honor Society
 - Flying Tigers
 - Future Teachers Club
 - Ministerial Fellowship
 - Performing Arts Club
 - Phi Beta Lambda (International Collegiate Business Society)
 - Psychology Club
 - Science Club
 - Student Activities Council (S.A.C.)
 - Student Government Association (S.G.A.)
- Events:**
- Beginning Week
 - All School Picnic/Party
 - Homecoming/Family Weekend
 - Spiritual Life Retreat
 - Exam Cram
 - Spring Fling
 - Concerts
- Journalism:**
- The Tiger Chronicle (newspaper)
 - Tiger's Eye (A publication that compiles student submissions of poetry, short stories, photography, and art)
 - The Centralian (yearbook)
- Ministry Teams:**
- Contemporary Christian Music Bands
 - Lamps of Fire (vocal and instrumental group)
 - Morning Star Revue (drama group)
 - Wadi Walkers (vocal group)
- Music Ensembles:**
- Chorale
 - Concert Choir
 - Jazz Band

ATHLETICS: NAIA Division II

- | | |
|---------------|-----------------|
| Men's: | Women's: |
| Baseball | Basketball |
| Basketball | Cheerleading |
| Cheerleading | Cross Country |
| Cross Country | Golf |
| Golf | Soccer |
| Soccer | Softball |
| Tennis | Tennis |
| | Volleyball |



DONNELLY COLLEGE

FOUNDED 1949

Donnelly College is a Catholic institution of higher education that seeks to continue the mission of Jesus Christ by making the love of God tangible in our world. Specifically, the mission of Donnelly College is to provide education and community services with personal concern for the needs and abilities of each student, especially those who might not otherwise be served.

OFFICE OF ADMISSIONS

608 North 18th St.
 Kansas City, KS 66102
www.donnelly.edu

ADMISSIONS AND FINANCIAL AID INFORMATION

FAFSA Priority Date: April 1
Application Deadline: Rolling
Application Fee: None
Director of Admissions: Edward Marquez
Phone: (913) 621-8713
E-mail: admissions@donnelly.edu
Director of Financial Aid: Belinda Ogan
Phone: (913) 621-8740
E-mail: bogan@donnelly.edu

FALL 2010 ENROLLMENT STATISTICS

Full-time Undergraduate: 305
Part-time Undergraduate: 347
% Undergraduate Men: 29%
% Undergraduate Women: 71%
Avg. Freshman ACT score: n/a
Avg. Freshman HS GPA: n/a
Student to Faculty Ratio: 14 : 1

FALL 2010 FINANCIAL AID STATISTICS

% of Students Receiving Financial Aid: 88%
Avg. Financial Aid package for Freshmen with financial need: \$4,460

COSTS FOR ACADEMIC YEAR 2011 - 2012

Tuition:	\$6,420
Required Fees:	50
Room and Board:	<u>4,982</u>
TOTAL:	\$11,452

MAJORS OFFERED

Associate's Degrees

Arts
 Science
 Applied Science

Bachelor Degree

Organizational Leadership

With concentrations in:

Business
 Licensed Practical Nurse
 Fine Arts
 Information Technology
 Liberal Arts
 Mathematics
 Natural Science
 Social Science

Certificate Programs

Allied Health
 Certified Nurses Aide
 Certified Medication Aide
 Home Health Aide
 Licensed Practical Nurse
 Pharmacy Tech. I & II
 Business
 Information Technology

Intensive English Program

English as a Second Language Program

ACTIVITIES

Organization of Student Leaders

Healthy Student Task Force

Residence Hall Committee

Soccer Club

Student Ambassadors

Campus Ministry



FRIENDS UNIVERSITY **FOUNDED 1898**

Friends University offers more than 100 years of heritage, experienced faculty and staff, athletics, fine arts, a beautiful campus, state-of-the-art facilities, and learning within the context of the Christian faith. Friends is a place where students matter!

OFFICE OF ADMISSIONS

2100 W. University Street
Wichita, KS 67213
www.friends.edu

ADMISSIONS AND FINANCIAL AID INFORMATION

FAFSA Priority Date: March 15
Application Deadline: Rolling
Application Fee: \$35
Executive Director of Admissions: Erin Haneberg
Phone: (800) 794-6945
E-mail: haneberg@friends.edu
Director of Financial Aid: Brandon Pierce
Phone: (800) 794-6945
E-mail: [apply4\\$@friends.edu](mailto:apply4$@friends.edu)

FALL 2010 ENROLLMENT STATISTICS

Full-time Undergraduate: 1,531
Part-time Undergraduate: 431
% Undergraduate Men: 44%
% Undergraduate Women: 56%
Avg. Freshman ACT score: 21.8
Avg. Freshman HS GPA: 3.2
Student to Faculty Ratio: 14 : 1

FALL 2010 FINANCIAL AID STATISTICS

% of Students Receiving Financial Aid: 99%
Avg. Financial Aid package for Freshmen with financial need: \$20,800

COSTS FOR ACADEMIC YEAR 2011 - 2012

Tuition: \$20,880
Required Fees: 150
Room and Board: 5,966
TOTAL: \$26,996

ACTIVITIES

- Acts of Faith (theater group)
- Art Club
- Art and Design Society
- Association of Information Technology Professionals
- Bass Fishing Club
- Collegiate Music Educators
- National Conference (CMENC) Communications
- Concert Choir
- Creative Writing
- Crimson Chronicle (newspaper)
- Drama Club (Theta Phi)
- Economics Club
- English Club (Sigma Tau Delta)
- Environmental Club
- Falcon Activities and Campus Events (FACE)
- Forensics
- Friends Community Symphony Orchestra
- History Club
- Jazz Combos
- KNEA-SP (Friends Chapter)
- Mu Phi Epsilon Music Fraternity
- Multi-Cultural Student Assembly (MSA)
- Phi Beta Lambda Business Fraternity
- Psi Chi National Honor Society in Psychology
- Psychology Club
- Sigma Delta Pi (Spanish Club)
- Singing Quakers
- Student Government Association (SGA)
- Talisman (yearbook)
- The Gallery (literary/art Magazine)
- University Band
- Zoo Science Club
- Intramural Activities**
- 3-on-3 basketball
- 3-on-3 volleyball
- Basketball
- Billiards
- Dodgeball
- Fantasy Football
- Flag football
- Indoor soccer
- Kickball
- Ping pong
- Softball
- Ultimate frisbee
- Volleyball
- Wiffleball

MAJORS OFFERED

- Accounting
- Art
- Art Education
- Art Studio
- Ballet
- Biology
- Business Administration
- Chemistry
- Christian Ministry
- Communications
- Computer Science and Information Systems
- Criminal Justice
- Drama
- Education
- Art (PreK-12)
- Business
- Elementary (K-6)
- English
- History and Government
- Mathematics
- Music (PreK-12)
- Spanish (PreK-12)
- English
- Field Biology
- Finance
- Forensic Science
- Graphic Design
- Health and Physical ED
- Health Management
- Health Science
- History
- Human Services (Psychology)
- Human Services (Sociology)
- International Business
- Liberal Studies
- Management Information Systems
- Marketing
- Mathematics
- Ministry
- Music
- Music Business
- Music Education
- Music Performance
- Music Theater
- Natural Science
- Pastoral Ministry
- Physical ED
- Political Science (History)
- Pre-Dentistry
- Pre-Law
- Pre-Medicine
- Pre-Optometry
- Pre-Pharmacy
- Pre-Physical Therapy
- Pre-Vet
- Radiology Technology
- Religion and Philosophy
- Spanish
- Theatre
- Theatre Education
- Youth Ministry
- Zoo Science
- Minors offered:**
- Entrepreneurship
- Management

ATHLETICS: NAIA Division II

- | | |
|-----------------|-----------------|
| Men's: | Women's: |
| Baseball | Basketball |
| Basketball | Cheerleading |
| Cheerleading | Cross country |
| Cross country | Soccer |
| Football | Softball |
| Golf | Tennis |
| Soccer | Track and field |
| Tennis | Volleyball |
| Track and field | |

Hesston College

START HERE, GO EVERYWHERE

HESSTON COLLEGE

FOUNDED 1909

Hesston College, the two-year college of Mennonite Church USA, educates and nurtures each student within Christ-centered community, integrating thought, life and faith for service to others in the church and the world.

OFFICE OF ADMISSIONS

301 South Main
P.O. Box 3000
Hesston, KS 67062
www.hesston.edu

ADMISSIONS AND FINANCIAL AID INFORMATION

FAFSA Priority Date:	April 1
Application Deadline:	Open
Application Fee:	\$15
VP of Admissions:	Rachel Swartzendruber Miller
Phone:	(800) 995-2757
E-mail:	admissions@hesston.edu
Director of Financial Aid:	Marcia Mendez
Phone:	(800) 995-2757
E-mail:	marciam@hesston.edu

FALL 2010 ENROLLMENT STATISTICS

Full-time Undergraduate:	396
Part-time Undergraduate:	52
% Undergraduate Men:	42%
% Undergraduate Women:	58%
Avg. Freshman ACT score:	22.0
Avg. Freshman HS GPA:	3.2
Student to Faculty Ratio:	14 : 1

FALL 2010 FINANCIAL AID STATISTICS

% of Students Receiving Financial Aid:	99%
Avg. Financial Aid package for Freshmen with financial need:	\$17,500

COSTS FOR ACADEMIC YEAR 2011 - 2012

Tuition:	\$21,312
Required Fees:	340
Room and Board:	<u>7,166</u>
TOTAL:	\$28,818

MAJORS OFFERED

Two-year degree programs

Aviation-Air Traffic Control
Aviation-Flight
Bible
Business
Computer Information Technology
Early Childhood Development
Nursing
Pastoral Ministries
Youth Ministries

Programs for Transfer

Accounting
Advertising
Agricultural Sciences
Architecture
Art
Athletic Training
Bible and Ministry
Biology
Business
Business Administration
Chemistry
Child & Family Studies
Communication Arts
Computer Science
Counseling
Disaster Management
Early Childhood Education
Economics
Education
Elementary Education
Engineering
English
Finance
General Studies
Graphic Design
Health Occupations
History
Horticulture
Information Science
Journalism
Liberal Arts
Literature
Management
Marketing
Mass Communication
Mathematics
Medical Technology
Music
Nursing
Physical Education
Physical Therapy
Physics
Pre-Dental
Pre-Law
Pre-Medicine
Pre-Pharmacy
Pre-Veterinary
Psychology
Public Relations
Religion
Science
Secondary Education
Social Work
Sociology
Special Education
Speech
Theatre Arts
Visual Arts
Youth Ministry

ACTIVITIES

Music and Theatre

Bel Canto choir
Hesston College Band
Hesston College Chorale
Main Stage
Theatre Productions
(2-3 productions per year)
"Screaming Larks" Pep Band

Intramural Activities

Co-ed volleyball
Flag football
Floor Hockey
Indoor Soccer
-Men's
-Women's
Men's basketball
Ping Pong
Racquetball
Sand volleyball
Tennis
Ultimate Frisbee
Wiffleball
Women's 3-on-3 basketball

ATHLETICS: NJCAA

Men's:	Women's:
Baseball-Div. II	Basketball-Div. II
Basketball-Div. II	Cross Country-Div. I
Cross Country-Div. I	Soccer-Div. I
Soccer-Div. I	Softball-Div. II
Tennis-Div. I	Tennis-Div. I
	Volleyball-Div. II



KANSAS WESLEYAN UNIVERSITY FOUNDED 1886

Transform your future with a faith-based, values-centered education from Kansas Wesleyan University. We have the degree programs, internship opportunities, and activities you need to succeed

OFFICE OF ADMISSIONS

100 East Claflin Avenue
Salina, KS 67401
www.kwu.edu

ADMISSIONS AND FINANCIAL AID INFORMATION

FAFSA Priority Date:	March 15
Application Deadline:	Rolling
Application Fee:	\$20
Director of Admissions:	Steve Berry
Phone:	(785) 827-5541
E-mail:	admissions@kwu.edu
Director of Financial Aid:	Glenna Alexander
Phone:	(785) 827-5541
E-mail:	kglennaa@kwu.edu

FALL 2010 ENROLLMENT STATISTICS

Full-time Undergraduate:	680
Part-time Undergraduate:	93
% Undergraduate Men:	45%
% Undergraduate Women:	55%
Avg. Freshman ACT score:	22.6
Avg. Freshman HS GPA:	3.4
Student to Faculty Ratio:	13 : 1

FALL 2010 FINANCIAL AID STATISTICS

% of Students Receiving Financial Aid:	99%
Avg. Financial Aid package for Freshmen with financial need:	\$23,241

COSTS FOR ACADEMIC YEAR 2011 - 2012

Tuition:	\$21,400
Required Fees:	none
Room and Board:	<u>7,200</u>
TOTAL:	\$28,600

ACTIVITIES

Academic Clubs

- Art Club
- Biological Society
- Chemistry Club
- Collegiate Music Educators (CMENC)
- Corpus Juris
- HPER Club
- History Club
- International Student Organization
- Kansas National Education Association-Student Program (KNEA-SP)
- Math & Physics Club
- Medical/Health Society
- Multicultural Student Assn.
- National Association for Music Education (CMNEC)
- Psychology Club
- Student National Education Association (SNEA)
- Student Nurses Organization (SNO)
- Writers Guild

Academic Honor Societies

- Alpha Chi
- Beta Beta Beta
- Phi Alpha Theta
- Pi Kappa Delta

Student Government

- Student Government Association (SGA)
- Student Activities Board (SAB)

Student Media

- The Advance (Newspaper)
- The Coyote (Yearbook)

Debate

Forensics

Performance Organizations

- Jazz Band
- Orchestra
- Philharmonic Choir
- Theatre
- Wesleyan Chorale
- Wind Ensemble

Religious Organizations

- Chapel
- Connection
- Fellowship of Christian Athletes (FCA)
- Sunday Buck Meal
- The Calling

Recreational Opportunities

- Basketball
- Bocce Ball
- Bowling
- Coyote Health Crunch
- Flag Football
- Racquetball
- Softball
- Table Tennis Tournament
- Volleyball
- Wallyball
- Wii/PS3 Tournament

MAJORS OFFERED

- Accounting
- Art
- Athletic Training
- Biology
- Biomedical Chemistry
- Business Leadership
- Business Management
- Business Studies
- Chemistry
- Communications
- Computer Information Systems
- Computer Science
- Criminal Justice
- Education
 - Elementary
 - Secondary
 - Special
- Engineering Physics
- English
- English w/Writing Emphasis
- Exercise Science
 - Corporate Fitness & Wellness Emphasis
 - Personal Training
 - Pre Physical Therapy Emphasis
- History
- Human Resource Management
- Marketing
- Mathematics
- Music
- Nursing
- Philosophy
- Physical Education
- Psychology
- Psychological Services
- Public Relations
- Religion
- Sociology
- Speech
- Sports Management
- Theatre

ATHLETICS: NAIA Division II

Men's:	Women's:
Baseball	Basketball
Basketball	Cheer squad
Cheer squad	Cross country
Cross country	Dance team
Football	Golf
Golf	Soccer
Soccer	Softball
Tennis	Tennis
Track	Track
	Volleyball



MANHATTAN CHRISTIAN COLLEGE

FOUNDED 1927

A Bible College focusing on training Christian leaders for any profession. Kansas State University is located directly across the street and provides students with additional opportunities to pursue many degree programs in a Christian environment.

OFFICE OF ADMISSIONS

1415 Anderson Avenue
Manhattan, KS 66501
www.mccks.edu

ADMISSIONS AND FINANCIAL AID INFORMATION

FAFSA Priority Date: April 1
Application Deadline: August 1
Application Fee: \$25
Admissions Director: Eric Ingmire
Phone: (877) 246-4622
E-mail: admit@mccks.edu
Director of Financial Aid: Margaret Carlisle
Phone: (877) 246-4622
E-mail: carlisle@mccks.edu

FALL 2010 ENROLLMENT STATISTICS

Full-time Undergraduate: 272
Part-time Undergraduate: 107
% Undergraduate Men: 56%
% Undergraduate Women: 44%
Avg. Freshman ACT score: 21.5
Avg. Freshman HS GPA: 3.2
Student to Faculty Ratio: 16 : 1

FALL 2010 FINANCIAL AID STATISTICS

% of Students Receiving Financial Aid: 84%
Avg. Financial Aid package for Freshmen with financial need: \$13,295

COSTS FOR ACADEMIC YEAR 2011 - 2012

Tuition: \$12,400
Required Fees: 490
Room and Board: 6,356
TOTAL: **\$18,342**

MAJORS OFFERED

Ministry
 Cross-Cultural Ministry
 Educational Ministry
 Family Ministry
 Pastoral Ministry
 Worship Ministry
 Youth Ministry

General Bible Studies

Dual Degree Program with Kansas State University, allowing students to receive a degree both at MCC and KSU at the same time. (5 year program)

ACTIVITIES

Chapel Services
 Small Groups/Life Groups
 A Different View (drama group)
 K-State Campus Ministries
 Christian Challenge
 Fellowship of Christian Athletes
 H.I.S. (Helping International Students)
 Icthus Christian Fellowship Navigators
 Ministry Opportunities
 Kerusso Dayz Ministry
 Ambassadors
 Nursing Home Ministry
 Praise Bands
 The Cru
 Student Council (STUCO)
 Summer Camp Teams

ATHLETICS: NCCAA Division II

Men's: Baseball, Basketball, Cross Country, Soccer
Women's: Basketball, Cross Country, Soccer, Volleyball



MIDAMERICA NAZARENE UNIVERSITY

FOUNDED 1966

Located near Kansas City, MNU is home to students who choose from 40 majors and 6 graduate programs. MNU offers top-ranked athletics and spiritual and social activities in a Christian setting.

OFFICE OF ADMISSIONS

2030 East College Way
Olathe, KS 66062

www.mnu.edu

ADMISSIONS AND FINANCIAL AID INFORMATION

FAFSA Priority Date:	March 1
Application Deadline:	Rolling
Application Fee:	\$25
Director of Admissions	Warren Rogers
Phone:	(800) 800-8887
E-mail:	admissions@mnu.edu
Director of Financial Aid:	Perry Diehm
Phone:	(800) 800-8887
E-mail:	pdiehm@mnu.edu

FALL 2010 ENROLLMENT STATISTICS

Traditional Undergraduate:	970
Adult Undergraduate:	385
% Undergraduate Men:	45%
% Undergraduate Women:	55%
Avg. Freshman ACT score:	20.5
Avg. Freshman HS GPA:	3.4
Student to Faculty Ratio:	12 : 1

FALL 2010 FINANCIAL AID STATISTICS

% of Students Receiving Financial Aid:	78%
Avg. Financial Aid package for Freshmen with financial need:	\$19,976

COSTS FOR ACADEMIC YEAR 2011 - 2012

Tuition:	\$20,500
Required Fees:	1,000
Room and Board:	<u>7,000</u>
TOTAL:	\$28,500

MAJORS OFFERED

- Majors**
- Accounting
 - Athletic Training
 - Bible & Theology
 - Biology
 - Biology Education
 - Business Administration
 - Business Education
 - Business Psychology
 - Chemistry
 - Corporate Communication
 - Criminal Justice
 - Elementary Education
 - English
 - English Language Arts Education
 - Forensic Biology
 - Forensic Chemistry
 - General Business (A.A.)
 - Graphic Design
 - History
 - History and Government Education
 - Intercultural Studies
 - Kinesiology
 - Liberal Arts (A.A.)
 - Marketing
 - Mathematics
 - Mathematics Education
 - Ministry
 - Missions
 - Music
 - Applied Pedagogy
 - Music Ministry
 - Music Performance
 - Music Education (B.M.Ed.)
 - Nursing (B.S.N.)
 - Organizational Leadership
 - Physical Education
 - Psychology
 - Religion
 - Sociology
 - Spanish
 - Speech/Theatre Education
 - Sports Management
 - Youth and Family Ministry

Pre-Professional Programs

- Pre-Chiropractic
- Pre-Dentistry
- Pre-Engineering
- Pre-Law
- Pre-Medicine
- Pre-Occupational Therapy
- Pre-Pharmacy
- Pre-Physical Therapy

ACTIVITIES

- Criminal Justice Club & Mock Trial Team
- Intramurals
- Mission Trips
- Psi / Shi (National Honors in Psychology)
- Residence Hall Council
- Student Government

ATHLETICS: NAIA Division I

Men's:	Women's:
Baseball	Basketball
Basketball	Soccer
Football	Softball
Soccer	Volleyball



NEWMAN UNIVERSITY **FOUNDED 1933**

Newman University is a Catholic liberal arts university in Wichita, KS. Newman offers more than 40 undergraduate and four graduate programs, small class sizes, and opportunities for students to find a mentor.

OFFICE OF ADMISSIONS

3100 McCormick Ave.
Wichita, KS 67213
www.newmanu.edu

ADMISSIONS AND FINANCIAL AID INFORMATION

FAFSA Priority Date:	March 1
Application Deadline:	None
Application Fee:	\$20
Dean of Admissions:	John Clayton
Phone:	(877) 639-6268
E-mail:	admissions@newmanu.edu
Director of Financial Aid:	Charly Smith
Phone:	(877) 639-6268
E-mail:	smithc@newmanu.edu

FALL 2010 ENROLLMENT STATISTICS

Full-time Undergraduate:	1,100
Part-time Undergraduate:	903
% Undergraduate Men:	37%
% Undergraduate Women:	63%
Avg. Freshman ACT score:	23.3
Avg. Freshman HS GPA:	3.5
Student to Faculty Ratio:	15 : 1

FALL 2010 FINANCIAL AID STATISTICS

% of Students Receiving Financial Aid:	100%
Avg. Financial Aid package for Freshmen with financial need:	\$19,831

COSTS FOR ACADEMIC YEAR 2011 - 2012

Tuition:	\$20,866
Required Fees:	850
Room and Board:	6,790
TOTAL:	\$28,506

MAJORS OFFERED

- Associate's programs:**
 Applied Science
 Business Administration
 Information Technology
 Liberal Arts
 Occupational Therapy Assistant
 Pre-Engineering
 Paralegal
 Radiologic Technology
 Respiratory Care
- Bachelor's programs:**
 Accounting
 Art
 Biochemistry
 Biology
 Business Studies
 Chemistry
 Communication
 Counseling
 Criminal Justice
 Elementary Education
 Secondary Education
 English
 Forensic Science
 Healthcare Science
 History
 Information Technology
 Interdisciplinary Studies
 Liberal Studies
 Management
 Management Information Systems
 Mathematics
 Nursing
 Pastoral Ministry
 Philosophy
 Psychology
 Sociology
 Sonography
 Theology
- Master's programs:**
 Business Administration
 Education
 Nurse Anesthesia
 Social Work
 Theology
- Pre-Professional programs:**
 Pre-Dentistry
 Pre-Engineering
 Pre-Law
 Pre-Medicine
 Pre-Optometry
 Pre-Pharmacy
 Pre-Physical Therapy
 Pre-Veterinary Science

ACTIVITIES

- Black Student Union
- Cheerleading
- Chemistry Club
- Communication Club
- Dance Team
- Environmental Change Organization
- HALO - Hispanic American Leadership Organization
- Health Professionals Club
- Jets For Life
- Koinonia
- Metanoia
- Multicultural Leadership Organization
- Newman Club
- NOTSA - Newman Occupational Therapy Student Association
- Nursing Club
- Pre Med Club
- Psychology Club
- Social Work Association
- Teachers Club
- Theatre Troupe

ATHLETICS: NCAA Division II

Men's:	Women's:
Baseball	Basketball
Basketball	Bowling
Bowling	Cross country
Cross country	Golf
Golf	Soccer
Soccer	Softball
Tennis	Tennis
Wrestling	Volleyball



OTTAWA UNIVERSITY **FOUNDED 1865**

The mission of Ottawa University is to provide the highest quality liberal arts and professional education in a caring, Christ-centered community of grace which integrates faith, learning, and life. The University serves students of traditional age and adult learners through undergraduate and graduate programs.

OFFICE OF ADMISSIONS

1001 South Cedar Street #17
Ottawa, KS 66067
www.ottawa.edu

ADMISSIONS AND FINANCIAL AID INFORMATION

FAFSA Priority Date: March 15
Application Deadline: Rolling
Application Fee: \$25
Chief Operating Officer: Keith Johnson
Phone: (800) 755-5200
E-mail: keith.johnson@ottawa.edu
Director of Financial Aid: Howard Fischer
Phone: (800) 755-5200
E-mail: howard.fischer@ottawa.edu

FALL 2010 ENROLLMENT STATISTICS

Full-time Undergraduate (Ottawa campus): 550
Part-time Undergraduate (Ottawa campus): 17
% Undergraduate Men: 56%
% Undergraduate Women: 44%
Avg. Freshman ACT score: 21.0
Avg. Freshman HS GPA: 3.2
Student to Faculty Ratio: 13 : 1

FALL 2010 FINANCIAL AID STATISTICS

% of Students Receiving Financial Aid: 99%
Avg. Financial Aid package for Freshmen with financial need: \$23,219

COSTS FOR ACADEMIC YEAR 2011 - 2012

Tuition: \$21,200
Required Fees: 480
Room and Board: 6,455
TOTAL: \$28,135

MAJORS OFFERED

- Accounting
- Art
- Biology
- Business Administration
- Communication
- Education
 - Art
 - Biology
 - Business
 - Elementary
 - English
 - History
 - Mathematics
 - Music
 - Physical Education
 - Vocal Music
- English
- Exercise Science
- History
- Human Services
- Individualized Management
- Information Systems
- Mathematics
- Music
- Physical Education

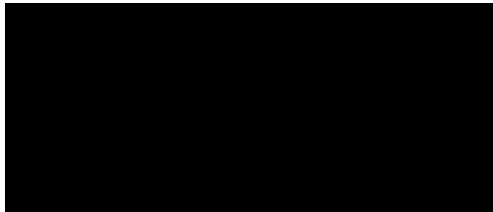
ACTIVITIES

- Social Clubs & Organizations**
- Amnesty International
 - Cheer & Dance
 - Drama Club
 - Gospel Choir
 - Greek Life
 - Mu Epsilon Nu
 - Phi Kappa Chi
 - Pi Theta Chi
 - Intramural Athletics
 - Jazz Band
 - Students Activities Force (SAF)
 - Student Senate
 - The Whole Earth Club
- Academic & Professional Organizations**
- Alpha Psi Omega
 - Biology Club
 - Choir
 - Debate & Forensics
 - Orchestra
 - National Scholastic Honor Societies
 - Radio
 - Student Government
 - Newspaper

ATHLETICS: NAIA

- | | |
|-----------------|-----------------|
| Men's: | Women's: |
| Baseball | Basketball |
| Basketball | Cross country |
| Cross country | Golf |
| Football | Soccer |
| Golf | Softball |
| Soccer | Tennis |
| Tennis | Track and field |
| Track and field | Volleyball |

- Campus Ministries**
- Christian Faith in Action
 - Fellowship of Christian Athletes
 - Gospel Choir
 - GOTCHA
 - Praise Band
 - Resident Chaplain Program
 - Summer Camp Ministries
 - Surge



SOUTHWESTERN COLLEGE FOUNDED 1885

Merging the liberal arts tradition with technology, Southwestern College is the only wireless laptop college in Kansas. Connect to our traditions, technology, outstanding academic reputation, quality faculty, and service learning.

OFFICE OF ADMISSIONS

100 College Street
Winfield, KS 67156
www.sckans.edu

ADMISSIONS AND FINANCIAL AID INFORMATION

FAFSA Priority Date:	March 15
Application Deadline:	August 1
Application Fee:	\$25
Director of Admissions:	Marla Sexson
Phone:	(800) 846-1543
E-mail:	marla.sexson@sckans.edu
Director of Financial Aid:	Brenda Hicks
Phone:	(800) 846-1543
E-mail:	stephannie.delong@sckans.edu

FALL 2010 ENROLLMENT STATISTICS

Full-time Undergraduate:	613
Part-time Undergraduate:	907
% Undergraduate Men:	53%
% Undergraduate Women:	47%
Avg. Freshman ACT score:	21.3
Avg. Freshman HS GPA:	3.3
Student to Faculty Ratio:	12 : 1

FALL 2010 FINANCIAL AID STATISTICS

% of Students Receiving	
Financial Aid:	100%
Avg. Financial Aid package for	
Freshmen with financial need:	\$18,057

COSTS FOR ACADEMIC YEAR 2011 - 2012

Tuition:	\$20,530
Required Fees:	150
Room and Board:	<u>6,322</u>
TOTAL:	\$28,022

MAJORS OFFERED

Majors

- Accounting
- Athletic Training
- Biochemistry
- Biology
- Business Administration
- Business & Computer Information Systems
- Chemistry
- Communication
- Computer Science and Digital Arts
- English
- History
- Interdisciplinary Studies
- Liberal Arts and Sciences
- Management
- Marine Biology
- Mathematics
- Music
- Music Education
- Philosophy & Religious Studies
- Physical Education
- Physical Performance and Sports Studies
- Psychology
- Sports Management
- Theatre Arts
- Undeclared

Education

- Elementary
- Early Childhood
- Health and Phys. Ed. (K-12)
- Music Performance
- Physical Performance and Sports Studies
- Secondary Certification
- Speech and Theatre

ATHLETICS: NAIA

Men's:	Women's:
Basketball	Basketball
Cheerleading	Cheerleading
Cross country	Cross country
Football	Dance
Golf	Golf
Soccer	Soccer
Tennis	Softball
Track and field	Track and field
	Tennis
	Volleyball

ACTIVITIES

Activities, Clubs, & Organizations

- 9 Lives Improvisational
- Comedy Troupe
- Beta Beta Beta (Tri-Beta)
- Black Student Union (BSU)
- Campus Players
- CCOM (Campus Council on Ministry)
- College Computer Club for Programmers (CCCP)
- Concert Band
- Discipleship
- Drum Circle
- Education Builders
- Fellowship of Christian Athletes (FCA)
- Freshman Class Council (FCC)
- Green Team
- International Club
- KSWC 100.3 FM
- Leadership
- Moundbuilder (yearbook)
- New Media
- Orchestra
- Phi Beta Lamda
- Phi Delta Theta
- Pi Gamma Mu
- Pride Builders
- SAAB Brother to Brother
- SC Collegian (newspaper)
- SC Democrats
- SC Republicans
- SCANS (Southwestern College Association of Nursing Students)
- SCATS (Southwestern College Athletic Training Society)
- SCTV
- Student Foundation (StuFu)
- The One Thing
- Theatre Arts
- Tone Builders
- Ultimate Frisbee Organization
- Vocal Music



STERLING COLLEGE

FOUNDED 1887

Sterling College is a Christ-centered college that emphasizes servant leadership. Sterling students help make a difference in the world. Sterling students come to live a leader's life; grow to understand a servant's heart; and learn to change the world.

OFFICE OF ADMISSIONS

125 West Cooper
Sterling, KS 67579
www.sterling.edu

ADMISSIONS AND FINANCIAL AID INFORMATION

FAFSA Priority Date:	March 15
Application Deadline:	Open
Application Fee:	\$25
Vice President for Enrollment:	Dennis Dutton
Phone:	(800) 346-1017
E-mail:	admissions@sterling.edu
Coordinator of Financial Aid:	Crystal Ramirez
Phone:	(800) 346-1017
E-mail:	finaid@sterling.edu

FALL 2010 ENROLLMENT STATISTICS

Full-time Undergraduate:	636
Part-time Undergraduate:	100
% Undergraduate Men:	54%
% Undergraduate Women:	46%
Avg. Freshman ACT score:	22.0
Avg. Freshman HS GPA:	3.2
Student to Faculty Ratio:	13 : 1

FALL 2010 FINANCIAL AID STATISTICS

% of Students Receiving Financial Aid:	98%
Avg. Financial Aid package for Freshmen with financial need:	\$16,948

COSTS FOR ACADEMIC YEAR 2011 - 2012

Tuition:	\$19,950
Required Fees:	100
Room and Board:	<u>6,752</u>
TOTAL:	\$26,802

MAJORS OFFERED

Art & Design*
Athletic Training
Biology*
Business Administration
Accounting
Entrepreneurship
International Business
Leadership Management
Marketing
Real Estate
Social Entrepreneurship
Chemistry*
Christian Ministries
Educational Leadership
Mission Ministries
Worship Leadership
Youth Ministries
Communications
Elementary Education
English*
Exercise Science
History
Independent Interdisciplinary
Mathematics*
Music
Music Education*
Psychology
Sports Management
Theatre Arts*
Theology & Ministry
Pre-Professional Studies
Pre-Dentistry
Pre-Law
Pre-Med
Pre-Nursing
Pre-Optometry
Pre-Physical Therapy
Pre-Veterinary

* Denotes Secondary ED Licensure

ATHLETICS: NAIA Division II

Men's:	Women's:
Baseball	Basketball
Basketball	Div. II
Div. II	Cross country
Cross country	Dance/Cheer
Football	Golf
Golf	Soccer
Soccer	Softball
Track and field	Track & Field
	Volleyball

ACTIVITIES

Arts

Children's Theatre
Chorale
Classical Theatre
Community Band
Concert Choir
Contemporary Theatre
Drum Line
Experimental Theatre
Highland Singers
Instrumental Ensembles
Musical Theatre
Pep Band
Piano Specialties
Professional Artist Exhibitions
Professional Juried Art Exhibitions
Student Art Showcases

Campus Organizations, Activities & Clubs

Alpha Chi
AmeriCorps
Antiquity Meets Present (AMP)
Behavioral Science Club
Campus Activities Board (CAB)
Catholic Student Association
Chi Beta Sigma
Class Officers
Fellowship of Christian Athletes (FCA)
Future Science Professionals Association (FSPA)
Great Plains Review (GPR)
Habitat for Humanity
Intramurals
Music at Sterling College (MASC)
Praise Band
Residence Hall Council
Resident Assistant Program
S-Club
Service Link
Sterling College Online Radio (SCOR)
Sterling College Online Television (SCOTV)
Student Chaplaincy Program
Student Government Association (SGA)
Student Senate
The Sterling Stir (newspaper)
The Warrior (yearbook)
Thespians at Sterling College (TASC)



TABOR COLLEGE

FOUNDED 1908

Tabor College, named by U.S. News & World Report as one of the best regional colleges in the Midwest, is dedicated to preparing people for a life of learning, work, and service for Christ and His kingdom.

OFFICE OF ADMISSIONS

400 South Jefferson
Hillsboro, KS 67063
www.tabor.edu

ADMISSIONS AND FINANCIAL AID INFORMATION

FAFSA Priority Date:	March 1
Application Deadline:	April 1
Application Fee:	\$30
VP of Enrollment Management:	Rusty Allen
Phone:	(800) 822-6799
E-mail:	admissions@tabor.edu
Director of Student Financial Assistance:	Scott Franz
Phone:	(800) 822-6799
E-mail:	scottf@tabor.edu

FALL 2010 ENROLLMENT STATISTICS

Full-time Undergraduate:	548
Part-time Undergraduate:	98
% Undergraduate Men:	53%
% Undergraduate Women:	47%
Avg. Freshman ACT score:	22.8
Avg. Freshman HS GPA:	3.3
Student to Faculty Ratio:	13 : 1

FALL 2010 FINANCIAL AID STATISTICS

% of Students Receiving Financial Aid:	98%
Avg. Financial Aid package for Freshmen with financial need:	\$21,378

COSTS FOR ACADEMIC YEAR 2011 - 2012

Tuition:	\$21,160
Required Fees:	580
Room and Board:	7,450
TOTAL:	\$29,190

MAJORS OFFERED

Majors

Athletic Training
Biblical and Religious Studies
Biochemistry
Biology
Business Administration
with concentrations
Chemistry
Christian Ministry
Communications
with concentrations
Computer Science
Computer Systems Administration
Educational Studies
Elementary Education
English
Graphic Design
Health/Physical Education
with concentrations
History
Humanities
International Studies
Mathematics
Medical Technology
Music Education
Music
with concentrations
Natural & Mathematical Sciences with concentrations
Philosophy
Psychology
Social Science
with concentrations
Social Welfare

Pre-Professional Studies

Dentistry
Law
Medical
Nursing
Optometry
Physical Therapy
Seminary
Social Work
Veterinary

Teacher licensing

Biology
Business Education
Chemistry
English
History
Math
Special Education

ACTIVITIES

Business Club
Interact with Business Professionals

Intramurals
Defeat Your Friends

Multicultural Student Union
Understanding the World

Science Club
Everything Involves Science

Student Music Association
Collegiate Music Educators National Conference

The Blue Jay
Tabor College Yearbook

The View
Campus newspaper

ATHLETICS: NAIA Division II

Men's:	Women's:
Baseball	Basketball
Basketball	Bowling
Bowling	Competitive
Competitive	Cheer
Cheer	Cross country
Cross country	Soccer
Football	Softball
Soccer	Tennis
Tennis	Track and Field
Track and field	Volleyball



UNIVERSITY OF SAINT MARY

FOUNDED 1923

The University of Saint Mary is big enough to offer an outstanding education, small enough to provide the opportunity to form lifelong friendships in a challenging and supportive community.

OFFICE OF ADMISSIONS

4100 South 4th Street
Leavenworth, KS 66048
www.stmary.edu

ADMISSIONS AND FINANCIAL AID INFORMATION

FAFSA Priority Date: April 1
Application Deadline: None
Application Fee: \$25
Director of Admissions: Ken Wuerzberger
Phone: (800) 752-7043
E-mail: admissions@stmary.edu
Director of Financial Aid: Annissa Epperson
Phone: (800) 752-7043
E-mail: finaid@stmary.edu

FALL 2010 ENROLLMENT STATISTICS

Full-time Undergraduate: 527
Part-time Undergraduate: 233
% Undergraduate Men: 44%
% Undergraduate Women: 56%
Avg. Freshman ACT score: 22.2
Avg. Freshman HS GPA: 3.22
Student to Faculty Ratio: 10 : 1

FALL 2010 FINANCIAL AID STATISTICS

% of Students Receiving Financial Aid: 98%
Avg. Financial Aid package for Freshmen with financial need: \$21,800

COSTS FOR ACADEMIC YEAR 2011 - 2012

Tuition: \$20,300
Required Fees: 470
Room and Board: 6,600
TOTAL: \$27,370
(Incoming freshmen also receive a free laptop)

MAJORS OFFERED

- Accounting
- Applied Psychology
- Art
- Biology
- Biomedical Sciences
- Business Administration
- Chemistry
- Child Development Education
- Clinical Laboratory Science
- Criminology
- Elementary Education
- English
- Global Studies
- Healthcare Informatics
- History
- Information Systems & Technology
- Interdisciplinary Studies
- Liberal Studies
- Mathematics
- Music (*minor*)
- Nursing
- Pastoral Ministry
- Pre-professional Programs
- Pre-Dentistry
- Pre-Law
- Pre-Medicine
- Pre-Pharmacy
- Pre-Physical Therapy
- Political Science
- Psychology
- Secondary Education
- Biology
- Chemistry
- English
- History
- Math
- Theatre
- Sports Management
- Theatre
- Theology

ACTIVITIES

- Business Club
- Campus Ministry
- Community Band
- Concert Chorale
- Delta Epsilon Sigma
- Fine Arts Drama
- Intramural sports
- National Student Nurses Association
- Multicultural Club
- Peer Mentors
- Phi Alpha Theta
- ROTC
- Science and Math Club
- Student Government Association
- Student Ambassadors
- Student Veterans Association
- Varsity Athletics

ATHLETICS: NAIA Division II

- | | |
|----------------------|----------------------|
| Men's: | Women's: |
| Baseball | Basketball |
| Basketball | Cheerleading & Dance |
| Cheerleading & Dance | Cross Country |
| Cross Country | Soccer |
| Football | Softball |
| Soccer | Track & Field |
| Track & Field | Volleyball |

COLLEGE GOAL SUNDAY

FEBRUARY 12, 2012



You've probably been considering a college education. And if you're like most people, you've probably been wondering how you are going to pay for it. College Goal Sunday can help!

The first step in the college financial aid process is to complete the FAFSA (Free Application for Federal Student Aid). Need help completing the FAFSA? On one afternoon each year, College Goal Sunday stages help sessions at different sites across the state of Kansas. Come and go as you please between 2 and 4 p.m. to meet with financial aid professionals and get hands-on help with the FAFSA.

This program is free. It's a service supported by the Lumina Foundation and coordinated by the Kansas Association of Student Financial Aid Administrators (KASFAA). The annual event is sponsored by USA Funds and Lumina Foundation for Education.

If you're thinking about college - and worrying about the money - this is the right place for more information. Decide which location is best for you and be sure to visit <http://www.collegegoal.org> for information on the 2012 program.

2011-2012 Kansas Private College Events & Campus Visit Information



If you would like to schedule an individual campus visit, please contact the appropriate Admissions office directly.

BAKER UNIVERSITY

Mini-Visit Day (9 a.m. to 12 p.m)	Sat. October 1
BU Visit Day	Mon. October 10
BU Visit Day	Fri. October 21
BU Weekend	Fri./Sat. November 4-5
BU Fine Arts Day	Fri. November 11
BU Visit Day	Mon. November 14
Admitted Student Day	Mon. February 20
Junior Visit Day	Fri. March 23
BU Weekend	Fri./Sat. March 30-31
BU Visit Day	Fri. July 20

For more information on any of these events, call 1-800-873-4282 or send an e-mail to admissions@bakeru.edu

BENEDICTINE COLLEGE

Raven Days
Mon. September 5
Fri. September 16
Fri. September 30 (*no overnights*)
Fri. October 14
Fri. October 28 (*no overnights*)
Fri. December 2
Mon. January 16
Fri. January 27 (*no overnights*)
Fri. February 17 (*no overnights*)
Mon. February 20
Fri. March 16
Fri. March 30
Fri. April 20

Personalized to your needs, individual visits can be scheduled. Please call our Office of Admissions at 913-360-7476 or 1-800-467-5340. You can also go to www.benedictine.edu/visit

Transfer Raven Days
Wed. October 12
Wed. November 2
Wed. November 16
Wed. March 28
Wed. April 11
Wed. April 25

Open House Fri./Sat. November 11-12

Presidential Scholarship Competition Fri./Sat. February 3-4

BETHANY COLLEGE

Preview Day Sat. September 17

Swede Friday Fri. October 14

Honors & Scholarship Day Sat. November 12

Honors & Scholarship Day Sat. December 3

Art, Music, & Theatre Awards Day Sat. February 11

Swede Friday Fri. March 2

Enrollment Day Sat. April 21

Law Career Day Fri. April 27

Transfer Day Sat. April 28

Junior Day Fri. May 4

Enrollment Day Sat. May 5

Enrollment Day Sat. May 12

Enrollment Day Sat. April 30

Enrollment Day Fri. June 1

Enrollment Day Fri. August 3

Swede Fridays: Interested in seeing what it's like to be a student at Bethany College?

Come to a Swede Friday and take a walking tour of campus, attend a class, eat lunch in the cafeteria, and visit with current students and financial aid staff. Your family and friends are welcome, too.

Preview Day: Get snapshot views of the Bethany College experience from different panel discussions with faculty and current students, as well as staff members from student life, admissions and financial aid. Then join us for lunch; family members welcome.

Enrollment Days: Meet with an academic advisor to pick out your classes and go through the registration process with student financial services, student life and more.

For more information or to schedule a personal visit, please contact Vicki Cornett, Coordinator of Recruitment Services. (800) 826-2281 or email at admissions@bethanylb.edu

2011-2012 Kansas Private College Events & Campus Visit Information



If you would like to schedule an individual campus visit, please contact the appropriate Admissions office directly.

BETHEL COLLEGE

Campus Visit Dates

Fri. October 7
Fri. November 18
Mon. February 20
Fri. March 30

Students may visit campus one of our campus visit days or schedule an individual visit anytime. Go to www.bethelks.edu and click on Future Students or call 1-800-522-1887 for more information

Music Scholarship Audition Dates

Fri. November 18
Mon. February 20
Fri. March 30

CENTRAL CHRISTIAN COLLEGE

***CCC Preview Weekends**

Fri./Sat. October 7-8
Fri./Sat. November 11-12

A prospective student can also plan an individualized visit by contacting Admissions at 1-800-835-0078 ext. 337. Visits can also be scheduled by email at admissions@centralchristian.edu or by registering at www.centralchristian.edu

***CCC Preview Weekends**

Fri./Sat. February 25-26
Fri./Sat. April 20-21

CCC Junior Preview Day

Fri. March 16

*All Preview Weekends include scholarship tests, athletic tryouts, and fine arts auditions.

English Open House

Fri. April 13

DONNELLY COLLEGE

Campus Visits

Individual campus visits can be scheduled by calling the Admissions Office at 913-621-8700.

FRIENDS UNIVERSITY

Friday with Friends

Fri. October 7

Athletic Recruitment Day

Sat. October 2

Fine Arts Showcase

Fri. October 21

Friday with Friends

Fri. November 11

Fine Arts Showcase

Fri. January 27

Friday with Friends

Fri. February 17

AVID Coordinator Visit

Mon. February 27

Art Challenge

Fri. March 2

Fine Arts Showcase

Fri. March 9

High School Counselor Day

Tue. March 27

Junior Day

Thu. April 26

For more information on any of these events or to schedule an individual campus visit, please contact Campus Visit Coordinator, Deb Bolen at 316-295-5103 or by email at deb@friends.edu

HESSTON COLLEGE

**Alumni Homecoming
and Student Visit Weekend** Fri./Sat. September 23-24

Student Visit Weekend Fri./Sat. October 28-29

Family Visit Weekend Fri./Sat. November 25-26
Includes Music and Theatre
Scholarship auditions (*Fri.*)

Student Visit Days Sun./Mon. January 15-16

Student Visit Weekend Fri./Sat. February 17-18

Student Visit Weekend Fri./Sat. March 16-17
Includes Music and Theatre
Scholarship auditions

Hesston College invites prospective students to visit campus anytime during their junior or senior years of high school. You can schedule a visit anytime that works for you, whether it's one of the special weekends listed here or another date of your choosing. To schedule a visit, call 1-800-995-2757 or email admissions@hesston.edu. Visits can also be scheduled online at www.hesston.edu

KANSAS WESLEYAN UNIVERSITY

Individual Campus Visits

Senior Day Fri. October 28

Junior/Senior Day Fri. November 11

Junior Day Thu. January 19

In addition to the visit days listed, we invite prospective students to schedule an individual visit! For more information, please contact a KWU Admissions Coordinator at 1-800-874-1154 ext. 1285 or by email at admissions@kwu.edu

MANHATTAN CHRISTIAN COLLEGE

Campus Visits

Family Weekend Fri./Sat. October 7-8

Oasis Youth Conference Fri./Sun. November 4-6

2012 Woman's World Fri./Sat. February 24-25

Individual campus visits can be scheduled by calling the Admissions Office at 1-877-2GO-4MCC. Or visit www.mccks.edu and click on Admissions.

www.oasisconference.org

www.mccks.edu

MCPHERSON COLLEGE

Bulldog Visit Days Sat. October 15
Sat. February 18
Sat. May 5

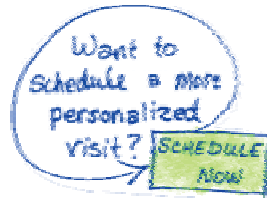
Graphic Design/ART Sat. October 8
Sat. February 25

Behavior Mania Thu. November 13

Presidential Scholarship Days Sat. October 29
Sat. November 19
Sat. December 10
Sat. February 4

For more information on any of these events or to schedule an individual visit, please send an email to admiss@mcpherson.edu or call 1-800-365-7402.

2011-2012 Kansas Private College Events & Campus Visit Information



If you would like to schedule an individual campus visit, please contact the appropriate Admissions office directly.

MIDAMERCIA NAZARENE UNIVERSITY

SCOUT MNU	Thu.-Fri. October 6-7
Students Checking Out University Turf	Thu.-Fri. February 2-3
Senior Visit Days	Sat. September 17 Sat. November 5
Junior Visit Day	Sat. March 3

Individual visits can be scheduled M-F from 8 a.m. to 5 p.m. by contacting a Campus Visit Coordinator by calling 1-800-800-8887 ext. 3380 or by visiting www.mnu.edu

NEWMAN UNIVERSITY

Senior Day	Wed. October 12
Transfer Evening	Tue. October 18
Science & Allied Health NU Day	Thur. October 27
NU Day	Fri. November 11
NU Day	Fri. February 10
NU Day	Fri. March 16
NU Day	Saturday March 31
Transfer Evening	Tue. April 10

For more information on any of these events or to schedule an individual visit, please contact Jann Reusser at 1-877-NEWMANU ext/ 2144 or visit www.newmanu.edu

OTTAWA UNIVERSITY

- Individual Campus Visits**
- Auditions/Try-Outs**
- OU Open Houses**

We understand that it can be challenging to attend one of our regularly scheduled campus visit event dates. In order to better meet your needs, please call us at 1-800-755-5200, #2 or e-mail us at admiss@ottawa.edu to set up a visit that fits your busy schedule.

Junior/Senior Visit Days	Sat. September 10 Sat. October 22 Sat. November 12 Sat. January 28 Sat. February 25 Sat. March 31
Math & Science Days	Tue. November 15 Tue. February 21

Auditions are generally used as a means to determine qualifications for scholarships in the following areas: music, theatre, communications, and athletics. Please contact Admissions admiss@ottawa.edu for more info.

Open House events include visits with departments on campus that you may have questions about, including financial aid, student affairs, admissions, career services, and more. Attend one of OU's Open House events to find out how Ottawa University offers you more. Visit www.ottawa.edu for a complete list.

Top Scholars Competition	Sat. December 3 Sat. March 3
---------------------------------	---------------------------------

Invitees compete for full-tuition scholarships. Those invited must have applied and been accepted to Ottawa University prior to the competition date. For more information contact the Office of Admissions at 1-800-755-5200, #2.

SOUTHWESTERN COLLEGE

Explore More Days Sat. October 1
Sat. November 12
Mon. January 16

For more information on any of these events or to schedule an individual visit, call Tami Schmidt at 620-229-6236 or send an e-mail to tami.schmidt@sckans.edu

Multicultural Day Wed. October 26

STERLING COLLEGE

Composer Series Weekend Sat./Sun. October 1-2
Theatre Night Preview Thu. October 13
Theatre Night Preview Fri. October 14
Warrior Day Sat. October 29
Preview Weekend Sun./Mon. November 13-14
Preview Day Mon. January 16
for HS Juniors & Seniors
Preview Weekend Thu./Fri. February 2-3
Theatre Workshop Day Fri. February 24
Preview Day Wed. February 29
for Transfers
Preview Weekend Sun./Mon. March 25-26
Preview Weekend Sun./Mon. April 15-16

To register for any of these events or to schedule a personalized visit, please contact Erin Cureton at 1-620-278-4314 or Admissions at 1-800-346-1017. Visits can also be scheduled online at www.sterling.edu

TABOR COLLEGE

Campus Visit Days Sun./Mon. October 16-17
Campus Visit Days Sun./Mon. November 6-7
Presidential Leadership Scholarship Day
(invitation only) Sun./Mon. February 19-20
Campus Visit Days Sun./Mon. March 11-12

For more information on any of these events contact Amanda Lee, Campus Visit Coordinator, at campusvisit@tabor.edu or call 1-800-TABOR-99.

UNIVERSITY OF SAINT MARY

Individual Campus Visits

Fall Discovery Days Tue./Wed. October 25-26
Experience life as a Saint Mary student

Counselor Luncheon Fri. November 18
High school counselors and community college counselors can learn about the strengths of a USM education

Spring Discovery Days Sun./Mon. February 19-20
Experience life as a Saint Mary student

Individual campus visits may be scheduled Monday Through Friday. Preferred visit times are 10 a.m. and 1 p.m. during the week. Saturday visits are by appointment only. Visit arrangements can be made by visiting www.stmary.edu and completing the visit request form; by calling the USM Office of Admission at 1-800-752-7043; or by email at admissions@stmary.edu

For more details contact the USM Office of Admission at 913-758-6118 or by email at admissions@stmary.edu

To apply for federal student financial aid and to apply for many state student aid programs, students must complete a Free Application for Federal Student Aid (FAFSA). The information you provide on your FAFSA determines if you are eligible for financial aid. Visit the FAFSA website at www.fafsa.ed.gov.

What is student financial aid? It is financial help to pay college expenses when you are enrolled in an eligible program at a college or university participating in the federal student aid programs. The aid covers expenses such as tuition and fees, room and board, books, supplies, and transportation. It is based on demonstrated financial need, not on grades.

The categories of financial aid:

Grants

Grants are financial aid you do not have to repay. Most grants are limited to undergraduate students. The amount you receive depends on your need, the cost of attending college, and enrollment status (full-time or part-time).

Federal Pell Grants

Federal Pell Grants for the 2011-2012 award year (July 1, 2011 to June 30, 2012) range from \$1,176 to \$5,550; for students enrolled full time, with lesser award amounts available to students enrolled less than full-time.

Federal Supplemental Educational Opportunity Grants

FSEOGs range from \$100 to \$4,000.

TEACH Grant Program

Through the College Cost Reduction and Access Act of 2007, Congress created the Teacher Education Assistance for College and Higher Education (TEACH) Grant Program that provides grants of up to \$4,000 per year to students who intend to teach in a public or private elementary or secondary school that serves students from low-income families.

More information: <http://studentaid.ed.gov/PORTALSWebApp/students/english/TEACH.jsp>

Work Study

The federal work study (FWS) program locates part-time, on and off campus jobs for college students at schools participating in the program. The wages you receive will help pay your educational expenses. FWS encourages community service work and work related to your course of study whenever possible. Undergraduate or graduate students may receive work study. Individual colleges and universities handle their work study programs differently. Students should contact their financial aid office to learn of employment options and procedures.

Loans

There are several federal loan programs. You may be eligible to borrow money for school from one or more of them. Additional funds can be obtained from banks that make private student loans. Loans are borrowed money you must repay with interest. Undergraduate or graduate students can borrow federal student loans. Parents may also borrow to pay the educational expenses of their dependent undergraduate students.

Federal Perkins Loans

These loans are offered by participating schools to students who demonstrate the greatest financial need. They have a fixed, low interest rate of 5 percent. The maximum annual loan amount is \$5,500 for undergraduates and \$8,000 for graduate students.

William D. Ford Federal Direct Student Loans

Direct Loans are low-interest loans for students and parents to help pay for the cost of a student's education. The lender is the U.S. Department of Education rather than a bank or other financial institution.

There are three types of Direct Loans:

1. Direct Subsidized Loans are for students with demonstrated financial need, as determined by federal regulations. No interest is charged while a student is in school at least half-time, during the grace period and during deferment periods. The interest rate for loans disbursed between July 1, 2011 and June 30, 2012 is 3.47% for undergraduate students and 6.8% for graduate students. Annual award limits are between \$3,500 and \$8,500 depending upon grade level.
2. Direct Unsubsidized Loans are not based on financial need; interest is charged during all periods, even during the time a student is in school and during grace and deferment periods. The interest rate is 6.8%. Annual award limits are between \$5,500 to \$20,500 depending upon grade level and dependency status.
3. Direct PLUS Loans are unsubsidized loans for the parents of dependent students and for graduate/professional students. PLUS loans help pay for education expenses up to the cost of attendance minus all other financial assistance. Interest is charged during all periods. The interest rate is fixed at 7.9% and the maximum award amount is based on the school's cost of attendance minus any other financial aid the student receives.

U.S Department of Veteran's Affairs

Your local department of veteran's affairs also offers assistance. If you are a veteran or a dependent of a veteran then additional benefits may be available to you. Information is available at www.gibill.va.gov or by calling 1.888.442.4551.

2011-2012 FEDERAL FINANCIAL AID SUMMARY CHART

Federal Student Aid Program	Types of Aid	Program Details	Annual Award Limits (subject to change)
Federal Pell Grant	Grant: does not have to be repaid	<i>Available to undergraduates. All eligible students will receive the Federal Pell Grant amounts for which they qualify.</i>	\$1,176 to \$5,550
Federal Supplemental Educational Opportunity Grant (SEOG)	Grant: does not have to be repaid	<i>For undergraduates with exceptional financial need. Priority is given to Federal Pell Grant recipients. Funds depend on availability at the school.</i>	\$100 to \$4,000
TEACH Grant Program	Grant: does not have to be repaid unless the service obligation is not met	<i>For students who are taking or will take the necessary coursework to become an elementary or secondary teacher and agree to teach for 4 years in a "high need" field after graduation.</i>	Up to \$4,000
Iraq and Afghanistan Service Grant	Grant: does not have to be repaid. Must be under 24 years of age and enrolled in college at least part-time at the time of the parent's or guardian's death	<i>A program for students who are not eligible for Pell Grants but whose parent or guardian was a member of the U.S. Armed Forces and died as a result of a service performed in Iraq or Afghanistan after Sept. 11, 2001.</i>	Award amount is equal to the amount of the maximum Pell Grant for the award year; not to exceed the cost of attendance for that award year.
Federal Work Study	Undergraduates and graduates can earn while attending college.	<i>Jobs can be on campus or off campus. Students will earn at least the current federal minimum wage.</i>	No annual maximum
Federal Perkins Loan	Loan: must be repaid	<i>5% interest on loans for both undergraduate and graduate students. Payment is owed to the school that made the loan.</i>	Up to \$5,500 for undergraduates Up to \$8,000 for graduate students
Subsidized Direct Stafford Loan	Loan: must be repaid	<i>Subsidized: The U.S. Dept. of Education pays the interest while the borrower is in school and during the grace and/or deferment periods.</i>	Between \$3,500 to \$8,500 depending on grade level
Unsubsidized Direct Stafford Loan	Loan: must be repaid	<i>Unsubsidized: The borrower is responsible for the interest during the life of the loan.</i>	\$5,500 to \$20,500 depending on grade level (includes any subsidized amts. received for the same period)
Federal PLUS Loan	Loan: must be repaid	<i>Available to parents of dependent undergraduate students.</i>	Maximum amt. is cost of attendance minus any other financial aid.

2011-2012 FINANCIAL AID INFORMATION AND SOURCES FOR KANSAS STUDENTS

The state of Kansas provides numerous scholarships, grants, and awards to KS resident students with diverse backgrounds and multiple interests.

The information on the following pages provides a summary of financial aid options in Kansas. For more information on financial assistance and to access the State of Kansas Student Aid Application online, please visit www.kansasregents.org and click on Students / Student Financial Aid.

Undergraduate Scholarships and Grants

You can apply for State of Kansas Student Aid 1 of 2 ways:

1. Complete the online form at <https://sfa.kansasregents.org/finaid/sfaLogin.jsp>
2. Print, complete and mail the State of Kansas Student Aid Application
<http://www.kansasregents.org/resources/PDF/1066-StAppAll11-12FINAL.pdf>

Kansas Comprehensive Grant

The Kansas Comprehensive Grant is available to needy Kansas residents enrolled full-time at eighteen private colleges and universities located in Kansas, the six state universities, and Washburn University. The Kansas Legislature provides limited assistance to financially needy students. To be considered you must complete and submit the FAFSA, listing one or more eligible colleges in the FAFSA. The priority receipt deadline is April 1. The funding level allows about 1 in 3 eligible students to be assisted with award amounts ranging from \$200 - \$3,500 at the private institutions and \$100 - \$1,500 at the public institutions. This grant is based on financial need.

INFORMATION: http://www.kansasregents.org/scholarships_and_grants

Vocational Educational Scholarship

The Vocational Educational Scholarship is available to eligible students enrolled in approved vocational programs at community or technical colleges and some two-year programs at four-year institutions. Applicants must take the vocational exam which is offered at various sites throughout the state typically on the first Saturday in November and March. See your high school or college financial aid advisor for applications or click on the link below. There are approximately 250 scholarships of \$500 each awarded to the applicants with the highest scores. Approximately 1 in 2 applicants is funded.

FORM (PDF): <http://www.kansasregents.org/resources/PDF/640-applicationbrochure2011.pdf>

Kansas National Guard Educational Assistance

The Kansas National Guard Educational Assistance provides up to 100% of tuition and fees that leads to the award of a certificate, diploma or degree upon satisfactory completion of course work requirements for members of a Kansas Air/Army National Guard unit. Full-time enrollment not required.

FORM (PDF): <http://www.kansasregents.org/resources/PDF/634-NatlGuard07app.pdf>

Kansas Military Service Scholarship

The Kansas Military Service Scholarship is available for the payment of tuition and fees at a public Kansas institution for students who are a resident of Kansas and has either (a) served in military service in Iraq or Afghanistan at least 90 days after September 11, 2001, or served less than such 90 days because of injuries received in Iraq or Afghanistan or (b) has served in military service in international waters or on foreign soil in support of military operations in Iraq or Afghanistan for at least 90 days after September 11, 2001, or served less than such 90 days because of injuries received during such service; and received an honorable discharge from military service or is still in military service; and has a DD-214 form or active duty orders that indicate the person has served after September 11, 2001, in one or more of the following military operations: (a) Enduring Freedom; (b) Nobel Eagle; or (c) Iraqi Freedom. Because financial need is a priority in awarding this scholarship, students will need to file a FAFSA form. Once your school considers you as a graduate status student, you are not eligible for this scholarship.

FORM (PDF): http://www.kansasregents.org/resources/PDF/642-2010_MilitaryServiceapp1011.pdf

Undergraduate Scholarships and Grants



Apply online at www.kansasregents.org

Kansas Ethnic Minority Scholarship

The Kansas Ethnic Minority Scholarship program is designed to assist financially needy, academically competitive students who are identified as members of any of the following ethnic/racial groups: African American; American Indian or Alaskan Native; Asian or Pacific Islander; or Hispanic.

ONLINE FORM: <https://sfa.kansasregents.org/finaid/sfaLogin.jsp>

INFORMATION: <http://www.kansasregents.org/resources/PDF/684-Kansasethnicminorityscholarship.pdf>

Kansas Teacher Service Scholarship

The Kansas Teacher Service Scholarship is a merit-based service obligation scholarship program that provides financial assistance to both students pursuing bachelor's degree programs and currently licensed teachers pursuing endorsement in hard-to-fill disciplines or master's degrees in hard-to-fill disciplines or either group planning to teach in an underserved geographic area. Recipients sign agreements to teach one year for each year of scholarship support in Kansas.

ONLINE FORM: <https://sfa.kansasregents.org/finaid/sfaLogin.jsp>

INFORMATION: <http://www.kansasregents.org/resources/PDF/686->

Kansas Nursing Service Scholarship

The Kansas Nursing Service Scholarship requires an obligation to practice as a LPN or RN in Kansas and work for a sponsor. A sponsor means any adult care home, psychiatric hospital, medical care facility, home health agency, local health department or any state agency, which employs LPNs or RNs, licensed by the State of Kansas. The sponsor will provide partial scholarship funding and provide employment upon licensure of the recipient. Recipients must sign an agreements to practice nursing for a sponsor one year for each year of scholarship support.

ONLINE FORM: <https://sfa.kansasregents.org/finaid/sfaLogin.jsp>

INFORMATION: <http://www.kansasregents.org/resources/PDF/685-KansasNursingServiceScholarship.pdf>

Nursing Sponsorship Agreement: <http://www.kansasregents.org/resources/PDF/638-nursingagreee.pdf>

Kansas State Scholarship

The Kansas State Scholarship is designed to assist financially needy students in the top 20-40% of Kansas high school graduates who are designated as state scholars during the senior year of high school.

ONLINE FORM: <https://sfa.kansasregents.org/finaid/sfaLogin.jsp>

INFORMATION: <http://www.kansasregents.org/resources/PDF/687-StateScholars.pdf>

Graduate Scholarships

Recipients must be Kansas residents. Additional information is available from the Board of Regents office. Call (785) 296-3517.

Kansas Osteopathic Medical Service Scholarship

Designed to encourage primary care physicians to establish practices in rural areas of Kansas. Recipients receive \$15,000 per year for up to four years of study at nationally accredited osteopathic schools. Preference goes to first year students. Recipients return one year of practice for each year of assistance. Applicants must complete a program application and the designated financial aid application.

PRIORITY DEADLINE: May 1

FORM (PDF): <http://www.kansasregents.org/resources/PDF/1070-Osteoapp1112.pdf>

Kansas Optometry Service Scholarship

Designed to encourage optometrists to establish Kansas practices. Kansas helps to pay the difference between resident and nonresident tuition at eligible out-of-state institutions. Recipients must return one year of practice for each year of assistance.

PRIORITY DEADLINE: May 1

FORM (PDF): <http://www.kansasregents.org/resources/PDF/1071-optapp11-12.pdf>

Kansas Dental Education Opportunities Program

Designed to encourage dentists to establish Kansas practices. Kansas helps pay the difference between resident and nonresident tuition at the University of Missouri-Kansas City.

Applications also available from UM-KC.

DEADLINE: Rolling

Kansas Nurse Educator Service Scholarship

Designed to encourage graduate level nursing students who agree to teach in a nurse education program at a Kansas postsecondary educational institution. The nursing programs that are currently participating are: Fort Hays State University, Pittsburg State University, University of Kansas Medical Center, Washburn University and Wichita State University. Scholarship amounts vary at each institution. Recipients will teach one year for each year of assistance after receiving a graduate degree. Applicants must complete an application available at the Nursing Department at the institution.

DEADLINE: See the school for their deadline (http://www.kansasregents.org/financial_aid_offices)

James B. Pearson Fellowship

Established by former Kansas Senator Pearson to encourage graduate students from Kansas public universities to experience the global perspective gained from study abroad. Preferences given to applicants whose studies are directly related to foreign affairs. The average stipend provided is \$2,445. Awards are subject to availability of funding. Applications also available from graduate school offices.

DEADLINE: April 1

Kansas Distinguished Scholarship Program

Created to encourage Brasenose, Clevening, Fulbright, Madison, Marshall, Mellon, Rhodes and Truman scholars from Kansas to continue graduate studies at Kansas public universities. Kansas reimburses tuition and fees to recipients subject to funding constraints.

Additional forms, documents, and information on other financial assistance programs

- Foster Child Education Assistance Program
- Tuition and Fee Waivers for Dependents and Spouses of Deceased Public Safety Officers
- Tuition and Fee Waivers for Dependents and Spouses of Deceased Military Personnel
- Tuition and Fee Waivers for Prisoners of War

INFORMATION: http://www.kansasregents.org/forms_documents

Programs

Kansas Learning Quest College Savings Program

The Kansas Learning Quest Savings Program offers education savings accounts to help students pay higher education expenses for individuals that are designated, or for the students themselves. The program also provides tax advantages under both state and federal law.

INFORMATION: http://www.kansasstatetreasurer.com/prodweb/cs_main.php

Midwest Student Exchange Program

The Midwest Student Exchange Program is an interstate initiative established by the Midwestern Higher Education Commission (MHEC) to increase interstate educational opportunities for students in its members states. This tuition discount program, includes the seven participating states of Kansas, Indiana, Michigan, Minnesota, Missouri, Nebraska, North Dakota and Wisconsin.

The Midwest Student Exchange Program seeks to provide more affordable educational opportunities for students to attend out-of-state institutions. It also strives to facilitate enrollment efficiency in those institutions which have excess capacity in existing programs.

INFORMATION: <http://www.mhec.org>

Financial Aid FAQ

Here are some of the most commonly asked questions about federal financial aid:

1. I probably don't qualify for aid. Should I apply for aid anyway?

Yes. Many families mistakenly think they don't qualify for aid and prevent themselves from receiving financial aid by failing to apply for it. In addition, there are a few sources of aid such as unsubsidized Stafford and PLUS loans that are available regardless of need. The FAFSA form is free.

2. Do I need to be admitted before I can apply for financial aid at a particular university?

No. You can apply for financial aid any time after January 1. To actually receive funds, however, you must be admitted and enrolled at the university.

3. Why can't I submit my financial aid application before January 1?

The need analysis process for financial aid uses the family's income and tax information from the most recent tax year (the base year) to judge your eligibility for need-based financial aid during the upcoming academic year (the award year). Since the base year ends December 31, you cannot submit a financial aid application until January 1. After all, your parents might earn a year-end bonus or realize capital gains from selling stocks on December 31. If you submit the financial aid application before January 1, it will be rejected.

4. Do I have to reapply for financial aid every year?

Yes. Most financial aid offices require that you apply for financial aid every year. If your financial circumstances change, you may get more or less aid. After your first year you will receive a "Renewal Application" which contains preprinted information from the previous year's FAFSA. Note that your eligibility for financial aid may change significantly, especially if you have a different number of family members in college. Renewal of your financial aid package also depends on your making satisfactory academic progress toward a degree, such as earning a minimum number of credits and achieving a minimum GPA.

5. How do I apply for a Pell Grant and other types of need-based aid?

Submit a FAFSA. To indicate interest in student employment, student loans and parent loans, you should check the appropriate boxes. Checking these boxes does not commit you to accepting these types of aid. You will have the opportunity to accept or decline each part of your aid package later. Leaving these boxes unchecked will not increase the amount of grants you receive.

6. Are my parents responsible for my educational loans?

No. Parents are, however, responsible for the Federal PLUS loans. Parents will only be responsible for your educational loans if you are under 18 and they co-sign your loan. In general, you and you alone are responsible for repaying your educational loans. On the other hand, if your parents (or grandparents) want to help pay off your loan, you can have your billing statements sent to their address. Likewise, if your lender or loan servicer provides an electronic payment service, where the monthly payments are automatically deducted from a bank account, your parents can agree to have the payments deducted from their account. But your parents are under no obligation to repay your loans. If they forget to pay the bill on time or decide to cancel the electronic payment agreement, you will be held responsible for the payments, not them.

7. Why is the family contribution listed on the SAR different from the family contribution expected by the university?

The federal formula for computing the expected family contribution is different from those used by many universities. In particular, the federal formula does not consider home equity as part of the assets.

8. If I take a leave of absence, do I have to start repaying my loans?

Not immediately. The subsidized Stafford loan has a grace period of 6 months and the Perkins loan a grace period of 9 months before the student must begin repaying the loan. When you take a leave of absence you will not have to repay your loan until the grace period is used up. If you use up the grace period, however, when you graduate you will have to begin repaying your loan immediately. It is possible to request an extension to the grace period, but this must be done before the grace period is used up. If your grace period has run out in the middle of your leave of absence, you will have to start making payments on your student loans.

9. I got an outside scholarship. Should I report it to the financial aid office?

Yes. If you are receiving any kind of financial aid from university or government sources, you must report the scholarship to the college financial aid office. Unfortunately, the university will adjust your financial aid package to compensate. Nevertheless, the outside scholarship will have some beneficial effects. At some universities outside scholarships are used to reduce the self-help level.

10. Where can I get information about Federal student financial aid?

Call the Federal Student Aid Information Center (FSAIC) at 1-800-4-FED-AID (1-800-433-3243) or 1-800-730-8913 (if hearing impaired) and ask for a free copy of The Student Guide: Financial Aid from the US Department of Education. This toll free hotline is run by the US Department of Education and can answer questions about federal and state student aid programs and applications. Or visit <http://studentaid.ed.gov>

11. Are work-study earnings taxable?

The money you earn from Federal Work-Study is generally subject to federal and state income tax, but exempt from FICA taxes (provided you are enrolled full time and work less than half-time).

Kansas College and University Financial Aid Offices

http://www.kansasregents.org/financial_aid_offices

General Information

1. PROGRAMS

You must complete and submit the State of Kansas Student Aid Application IF, AND ONLY IF, you want to apply for any of the following programs: Kansas Ethnic Minority Scholarship, Kansas Nursing Service Scholarship, Kansas State Scholarship, or the Kansas Teacher Service Scholarship.

Note: Two programs are described under Program information which have different application procedures and deadline dates; the Kansas Comprehensive Grant and Vocational Scholarship.

2. PROGRAM CRITERIA

Read the descriptions and criteria for each program before you apply. If you do not meet the minimum legislated criteria of a program, you cannot be considered for funding.

3. DEADLINE

The priority deadline date to process this STATE application is May 1. The Free Application for Federal Student Aid (FAFSA) priority deadline is **April 1**.

4. VALID APPLICATION

If you do not submit **BOTH** applications (See #3) to the correct addresses on the application, your file is incomplete and you will not be included in the applicant pool.

5. COMMON ELIGIBILITY CRITERIA

Each program listed requires the recipient to:

- be a Kansas resident,
- enroll at a Kansas college or university,
- not already be awarded an undergraduate degree

See application criteria for the Kansas Teacher Service Scholarship and the Kansas Nursing Service Scholarship exception to applicants with degree.

6. APPLICATION SUMMARY

A complete application requires:

- Completing the FAFSA and submitting it via Internet or in the addressed envelope provided with the federal application.
- Priority Deadline date is **April 1**.
- Completing the State online/paper application from the Financial Aid Sources for Kansas Students brochure.

Deadline date is **May 1**.

- Including a check or money order for \$12.00, made payable to KBOR, with the state application or pay online.
- Mailing the state application to KBOR. The address is:

Kansas Board of Regents
Student Financial Assistance
1000 S.W. Jackson; Suite 520
Topeka, KS 66612-1368

Remember: Check social security numbers. Make sure the correct student social security number is used on both the federal and the state application.

7. USE OF FEDERAL APPLICATION (FAFSA)

Many FAFSA questions are used to determine eligibility for the State of Kansas programs. Complete the FAFSA carefully and accurately. Otherwise, your scholarship application may be rejected. You may estimate adjusted gross income and federal taxes paid when you complete the FAFSA, in order to meet application priority deadlines.

8. MAILING INSTRUCTIONS

Provide a return address on your envelope. Your only proof of non-delivery will be your returned envelope. Use enough postage so your application can be delivered. Use first class mail, regular delivery only.

9. FOLLOW-UP

If you have general questions about the student financial aid application process, contact the financial aid office of your first college choice. If you have further questions about the Kansas student financial aid programs described in these instructions, contact:



Kansas Board of Regents
Student Financial Assistance
1000 SW Jackson Street Suite 520
Topeka, KS 66612-1368
785-296-3517
Fax: 785-296-0983
www.kansasregents.org

PROUD 2B

PRIVATE! .COM



www.kscolleges.org

