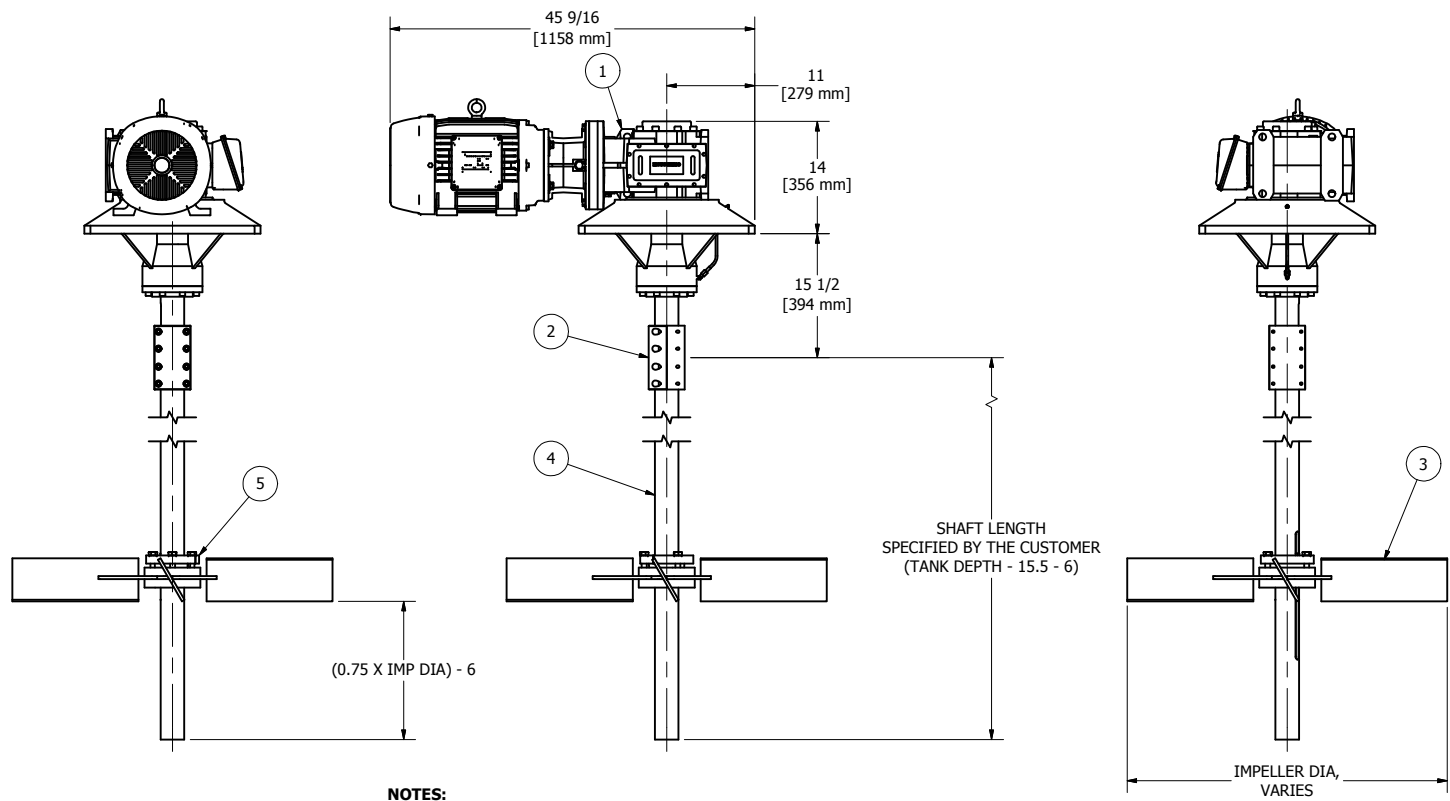
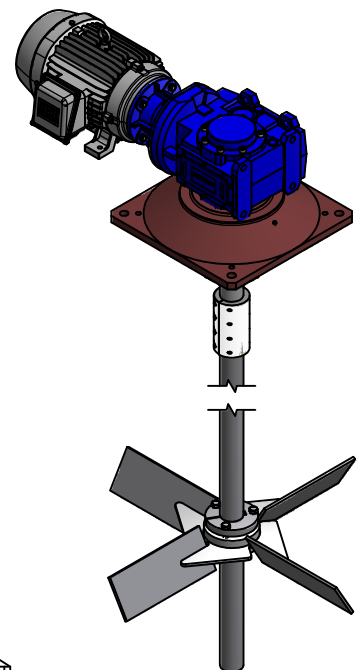
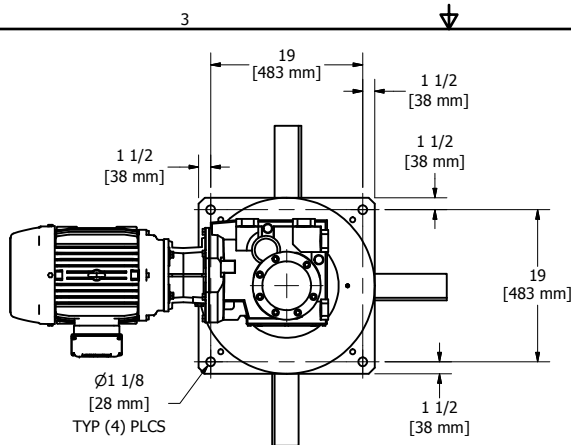


TABLE 1: DRIVE OPTIONS	
PART NUMBER	DESCRIPTION
M2A15-460	15 HP MAX 2000 DRIVE WITH 15 HP 1750 RPM, 254TC FRAME, 230/460 V, 60 HZ, TEXP MOTOR.
M2A15-575	15 HP MAX 2000 DRIVE WITH 15 HP 1750 RPM, 254TC FRAME, 575 V, 60 HZ, TEXP MOTOR.
M2A10-380	10 HP MAX 2000 DRIVE WITH 10 HP 1450 RPM, 254TC FRAME, 190/380 V, 50 HZ, TEXP MOTOR.

TABLE 2: IMPELLER OPTIONS	
PART NUMBER	DESCRIPTION
34CI	34" DIAMETER CANTED IMPELLER
36CI	36" DIAMETER CANTED IMPELLER
38CI	38" DIAMETER CANTED IMPELLER
40CI	40" DIAMETER CANTED IMPELLER



NOTES:
 1. APPROXIMATE DRIVE WEIGHT IS 836 LB (380 KG).

PARTS LIST			
ITEM	QTY	PART NUMBER	DESCRIPTION
1	1	-	SEE TABLE 1
2	1	2.9375CTX	CLAMP FOR 2 15/16" SHAFT
3	1	-	SEE TABLE 2
4	1	2.9375-S	BAR, ROUND 2 15/16" DIA. LENGTH SPRECIPIED BY CUSTOMER
5	1	2.9375-F	BUSHING, 2 15/16" BORE QD TYPE F

DRAWN	7/27/2010
LG	
CHECKED	
QA	
MFG	
APPROVED	

PSI 7519 Prairie Oak Dr
Houston, TX 77086
281-893-4774
281-893-1027 FAX

TITLE
**GENERAL ARRANGEMENT, M2A15 AT 60 HZ
 AND M2A10 AT 50 HZ**

SIZE: C DWG NO: GA10519 REV:
 SCALE: SHEET 1 OF 1