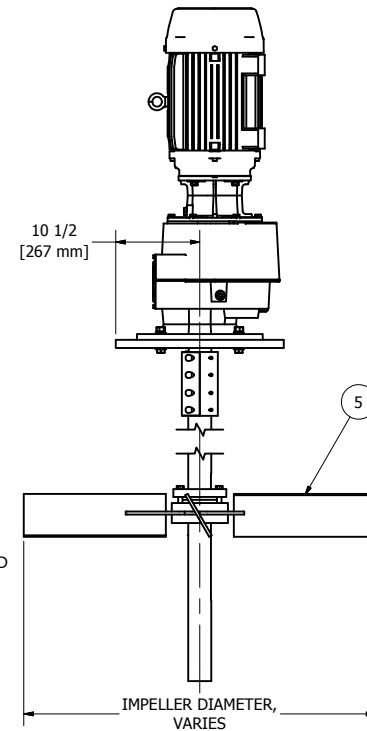
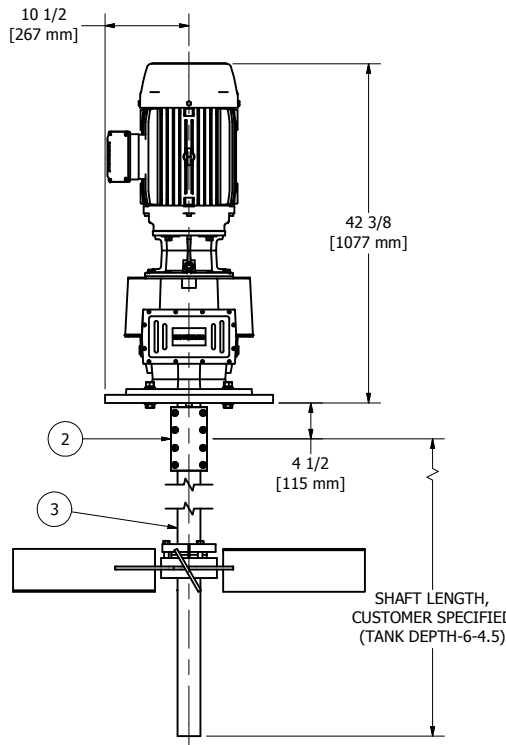
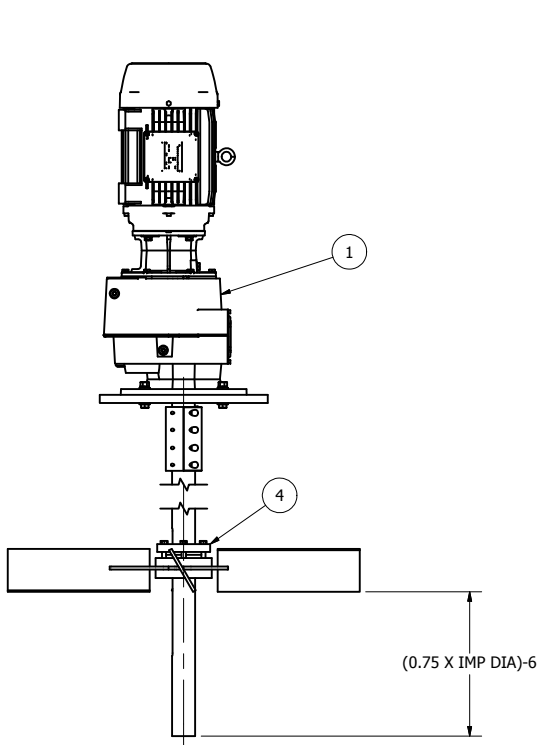
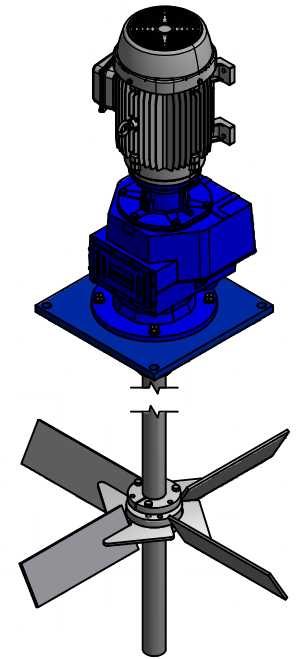
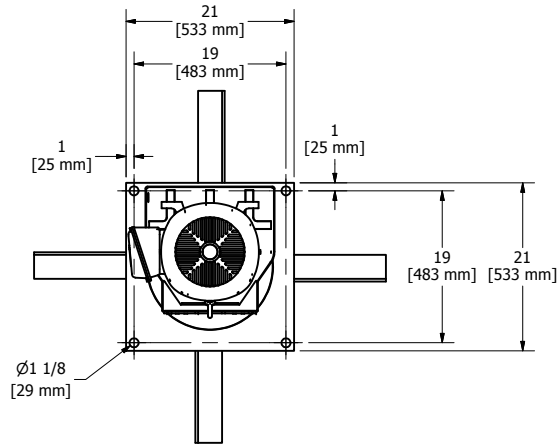


TABLE 1: DRIVE OPTIONS	
PART NUMBER	DESCRIPTION
LPM2A20V-460	20 HP VERTICAL LOW PROFILE DRIVE WITH 20 HP 1750 RPM, 256TC FRAME, 230/460 V, 60 HZ, TEXP MOTOR.
LPM2A20V-575	20 HP VERTICAL LOW PROFILE DRIVE WITH 20 HP 1750 RPM, 256TC FRAME, 575 V, 60 HZ, TEXP MOTOR.
LPM2A15V-380	15 HP VERTICAL LOW PROFILE DRIVE WITH 15 HP 1450 RPM, 256TC FRAME, 190/380 V, 50 HZ, TEXP MOTOR.

TABLE 2: IMPELLER OPTIONS	
PART NUMBER	DESCRIPTION
40CI	40" DIAMETER CANTED IMPELLER
42CI	42" DIAMETER CANTED IMPELLER
44CI	44" DIAMETER CANTED IMPELLER
48CI	48" DIAMETER CANTED IMPELLER




**NOTES:**

- APPROXIMATE DRIVE WEIGHT IS 635 LB (289 KG).

PARTS LIST			
ITEM	QTY	PART NUMBER	DESCRIPTION
1	1	-	SEE TABLE 1
2	1	2.875CTX	CLAMP FOR 2 7/8" SHAFT
3	1	2.875-S	BAR, ROUND 2 7/8" DIA. CUSTOMER TO SPECIFY LENGTH
4	1	TYPE F 2.875	BUSHING, 2 7/8" BORE QD TYPE F
5	1	-	SEE TABLE 2

DRAWN	LG	7/27/2010
CHECKED		
QA		
MFG		
APPROVED		

			7519 Prairie Oak Dr Houston, TX 77086 281-893-4774 281-893-1027 FAX		
<b>GENERAL ARRANGEMENT, LPM2A20-V AT 60 HZ AND LPM2A15-V AT 50 HZ</b>					
SIZE	DWG NO		REV		
C	GA11805				
SCALE			SHEET 1 OF 1		