

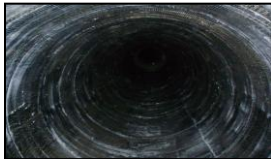


Project: PPL Montana

Pre-stressed Concrete Cylinder Pipe Repair



Location: Montana



Description of Work

Over 100 lineal feet of six 72 inch diameter PCCP sections in PPL Montana Colstrip Power Plant Unit suffered cracks both in the longitudinal and the circumferential directions due to accidental transient pressure. The design working pressure of the pipelines is 65 psi and the soil cover height is 8 ft.

Fibrwrap® Construction installed the Fyfe Company uni-directional Tyfo® SCH-41 System both in the circumferential and longitudinal directions as determined by Simpson Gumpertz & Heger Consulting Engineers to restore the pipe sections to their original capacity and to account for future transient pressure.

Implementing new age technology, the owner was provided an alternated to conventional construction, which resulted in vas time savings, reduced remedial costs, and reduced shut down time.

Fibrwrap Construction Inc.

4255 E. Airport Drive, Ontario, CA 91761

Tel: 909.390.4363 | Fax: 909.390.7030 | Email: info@fibrwrapconstruction.com

www.fibrwrapconstruction.com

Contractor's Li. 621404