



Project: ASU 90" Steel Pipe

Joint Repair



Location: Phoenix, AZ



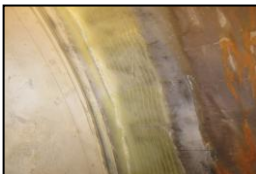
Description of Work

A 90-inch diameter steel pipeline in Phoenix, AZ was inoperative and in need of repair at the joint area. The pipe contained a cast iron butterfly valve with a flange joint that is 1/2" higher than the surface of the adjacent pipe and also exhibited leaks.

The mortar where the existing leak occurred was removed and provided with thickened grout to fill the gap between the flanges.

Fibrwrap® Construction then installed the Tyfo® SEH-51A System around the existing butterfly valve connection in between the adjacent pipes and filled with a thickened Tyfo® S Epoxy to smoothen and level the uneven connection.

The Fibrwrap® Construction team provided an effective solution using the Tyfo® Fibrwrap® System. The Joint area deterioration had rendered the pipe unusable and the speed of the repair system applied allowed the Owner to minimize downtime for the deficient pipeline.



Fibrwrap Construction Inc.

4255 E. Airport Drive, Ontario, CA 91761

Tel: 909.390.4363 | Fax: 909.390.7030 | Email: info@fibrwrapconstruction.com

www.fibrwrapconstruction.com

Contractor's Li. 621404