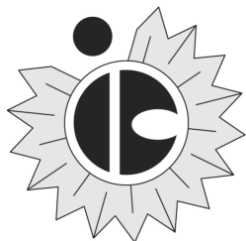

2010

Report of the

Independent Colleges and Universities

of Kansas

to the State Legislature



Kansas Independent College Association

To the Governor, the State Legislature, and the People of Kansas:

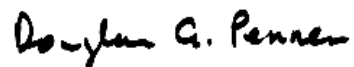
The 18 colleges and universities of the Kansas Independent College Association have played a central role in Kansas higher education for over 150 years. That role has become even more important during a time of unprecedented economic challenge for the citizenry of the state and for governmental leaders who must make exceptionally difficult decisions about allocating scarce resources.

As the 2010 legislative session begins, the private, non-profit colleges of Kansas would like to underscore the immense and highly efficient impact need-based financial aid for Kansas residents has on the well-being of the state and its young people. Kansas private colleges do not receive direct appropriations from the state. The state budget influences our students and our colleges almost exclusively through the Kansas Comprehensive Grant program, the program that directs financial aid to high need Kansas undergraduate students.

The most straightforward way of assessing the value of this program is to understand that it represents less than 1% of the state's total annual investment in post-secondary education. In return, the KICA colleges annually enroll and graduate approximately 20% of the state's bachelor's degree students.

Our colleges pride themselves on providing highly personalized and challenging educational opportunities for students from a wide range of economic and cultural/ethnic backgrounds—students attending KICA colleges have essentially the same background characteristics as those attending the Regents institutions. The institutional commitment to teaching and learning, small classes, access to required courses, and individual attention in advising and mentoring translate into the equivalent of Regents institutions' honors programs—for all students, not just a few. The result is impressive completion rates and graduates prepared to enter the work force and enrich the state economy.

KICA colleges are pleased to be a part of a state comprehensive higher education system that lets students choose the setting that best fits their abilities, interests and economic circumstances. This year, as the governor and the legislature face their most difficult fiscal situation in many years, the efficiency of the Kansas Comprehensive Grant in leveraging state resources is more visible than ever. We encourage continuing support of this critical program.



Douglas A. Penner
President, Kansas Independent College Association

Table of Contents

<u>Section I: Overview of Kansas' Independent Colleges & Universities</u>	
MEMBER PROFILES	2 - 3
IMPACT	
Educational and Enrollment Impact	4 - 5
Completion in Four Years	6
Economic Impact, Kansas Comprehensive Grant, and Cultural Roles	7 - 9
Financial Aid Information	10
<u>Section II: Data Tables & Charts</u>	
ENROLLMENT TRENDS	
Fall Headcount Enrollment at KICA Member Institutions: 2000-2009	11
Full-Time Fall Headcount Enrollment at KICA Member Institutions: 2000-2009	12
Part-Time Fall Headcount Enrollment at KICA Member Institutions: 2000-2009	13
Fall FTE Enrollments at KICA Member Institutions: 2000-2009	14
Total Fall Headcount Enrollment by Gender at KICA Member Institutions: 2001-2008	15
Total Undergraduate Enrollment by Ethnicity at KICA Member Institutions: Fall 2008	16
DEGREES AWARDED	
Total Degrees Awarded by KICA Member Institutions: 2008	17 - 18
Bachelor's Degrees in Education Awarded by KICA Institutions: 2002-2008	19
Bachelor's Degrees in Health Professions (primarily Nursing) Awarded by KICA Institutions: 2002-2008	20
AFFORDABILITY & FINANCING	
Tuition and Fees at KICA Member Institutions: 2000-2001 to 2009-2010	21
Annual Tuition Increases for KICA Institutions & Public 4-Yr. Institutions: 2000-2001 to 2009-2010	22
Financial Aid Packages Awarded to First-Year Students at KICA Institutions: 2007-2008	23
Institutional Aid Awards at KICA Member Institutions: FY2004-FY2008	24
Direct Economic Impact of KICA Institutions: FY2008	25

This document is based on facts, figures, and data from the Integrated Postsecondary Education Data System (IPEDS) and various other sources. We have done our best to ensure that the information provided here is as accurate and current as possible.

KICA Member College & University Profiles

Fall 2009 enrollment figures

Baker University

Founded: 1858

785-594-6451

www.bakeru.edu

Dr. Patricia Long, President

Total FTE: 2,938

Total headcount: 3,853

Benedictine College

Founded: 1858

913-367-5340

www.benedictine.edu

Stephen Minnis, J.D., President

Total FTE: 1,735

Total headcount: 1,877

Bethany College

Founded: 1881

785-227-3311

www.bethanylb.edu

Dr. Edward Leonard, III, President

Total FTE: 568

Total headcount: 592

Bethel College

Founded: 1881

316-283-2500

www.bethelks.edu

Dr. John Sheriff, President (interim)

Total FTE: 460

Total headcount: 437

Central Christian College of Kansas

Founded: 1884

620-241-0723

www.centralchristian.edu

Col. Hal V. Hoxie, President

Total FTE: 364

Total headcount: 466

Donnelly College

Founded: 1949

913-621-6070

www.donnelly.edu

Dr. Steven M. LaNasa, President

Total FTE: 439

Total headcount: 661

Friends University

Founded: 1898

316-295-5000

www.friends.edu

Dr. Biff Green, President

Total FTE: 2,144

Total headcount: 2,853

Hesston College

Founded: 1909

620-327-4221

www.hesston.edu

Dr. Howard Keim, President

Total FTE: 402

Total headcount: 439

Kansas Wesleyan University

Founded: 1886

785-827-5541

www.kwu.edu

Dr. Fletcher Lamkin, President & CEO

Total FTE: 749

Total headcount: 852

Manhattan Christian College

Founded: 1927

785-539-3571

www.mccks.edu

Mr. Kevin Ingram, President

Total FTE: 286

Total headcount: 345

McPherson College

Founded: 1887

620-241-0731

www.mcpherson.edu

Mr. Michael P. Schneider, President

Total FTE: 601

Total headcount: 629

MidAmerica Nazarene University

Founded: 1966

913-782-3750

www.mnu.edu

Dr. Edwin H. Robinson, President

Total FTE: 1,557

Total headcount: 1,778

Newman University

Founded: 1933

316-942-4291

www.newmanu.edu

Dr. Noreen Carrocci, President

Total FTE: 1,746

Total headcount: 2,557

Ottawa University

Founded: 1865

785-242-5200

www.ottawa.edu

Mr. Kevin C. Eichner, President

Total FTE: 1,589

Total headcount: 3,192

Southwestern College

Founded: 1885

620-229-6000

www.sckans.edu

Dr. W. Richard Merriman, Jr., President

Total FTE: 908

Total headcount: 1,810

Sterling College

Founded: 1887

629-278-4213

www.sterling.edu

Dr. Paul J. Maurer, President

Total FTE: 636

Total headcount: 722

Tabor College

Founded: 1908

620-947-3121

www.tabor.edu

Dr. Jules Glanzer, President

Total FTE: 615

Total headcount: 640

University of Saint Mary

Founded: 1923

913-682-5151

www.stmary.edu

Dr. Diane Steele, President

Total FTE: 793

Total headcount: 1,072

Impact: Educational

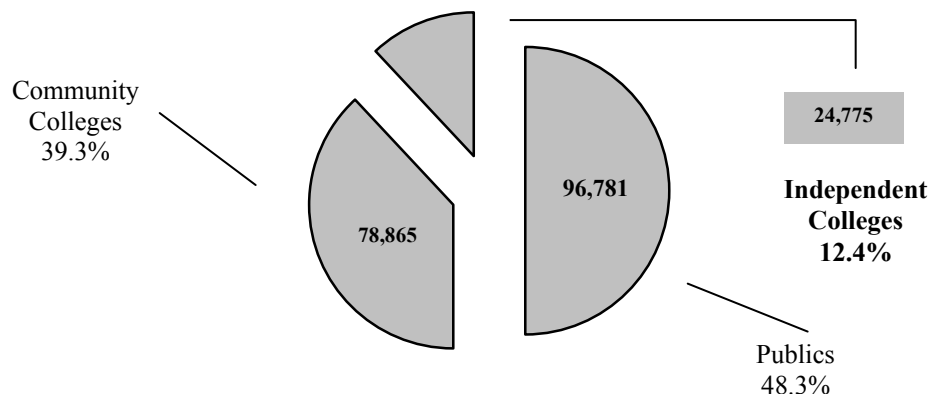
The Colleges: The Kansas Independent College Association is composed of eighteen fully accredited, not-for-profit colleges and universities.

- Sixteen are four-year baccalaureate level institutions and two are two-year associate degree colleges.
- They range in size from fewer than 400 students to over 3,000.
- They include the oldest colleges or universities in the state, Baker University and Benedictine College (formerly St. Benedicts), both founded in 1858.
- Programs include traditional residential campus study for full-time undergraduates, degree completion programs for non-traditional students, masters-level programs in a variety of areas, certificate programs related to specific employment competencies, online study, and satellite campuses both in-state and out-of-state and in other countries.
- Areas of study range from traditional liberal arts and sciences (history, English, chemistry, etc.) to highly specialized professional preparation, such as nursing, teacher education, and aviation instruction.

Enrollment: The total graduate and undergraduate enrollment, (full-time and part-time) for Fall 2009 was 24,775.

FALL 2009: Full-time & Part-time Graduate & Undergraduate Headcount Totals by Sector Resident and Non-Resident

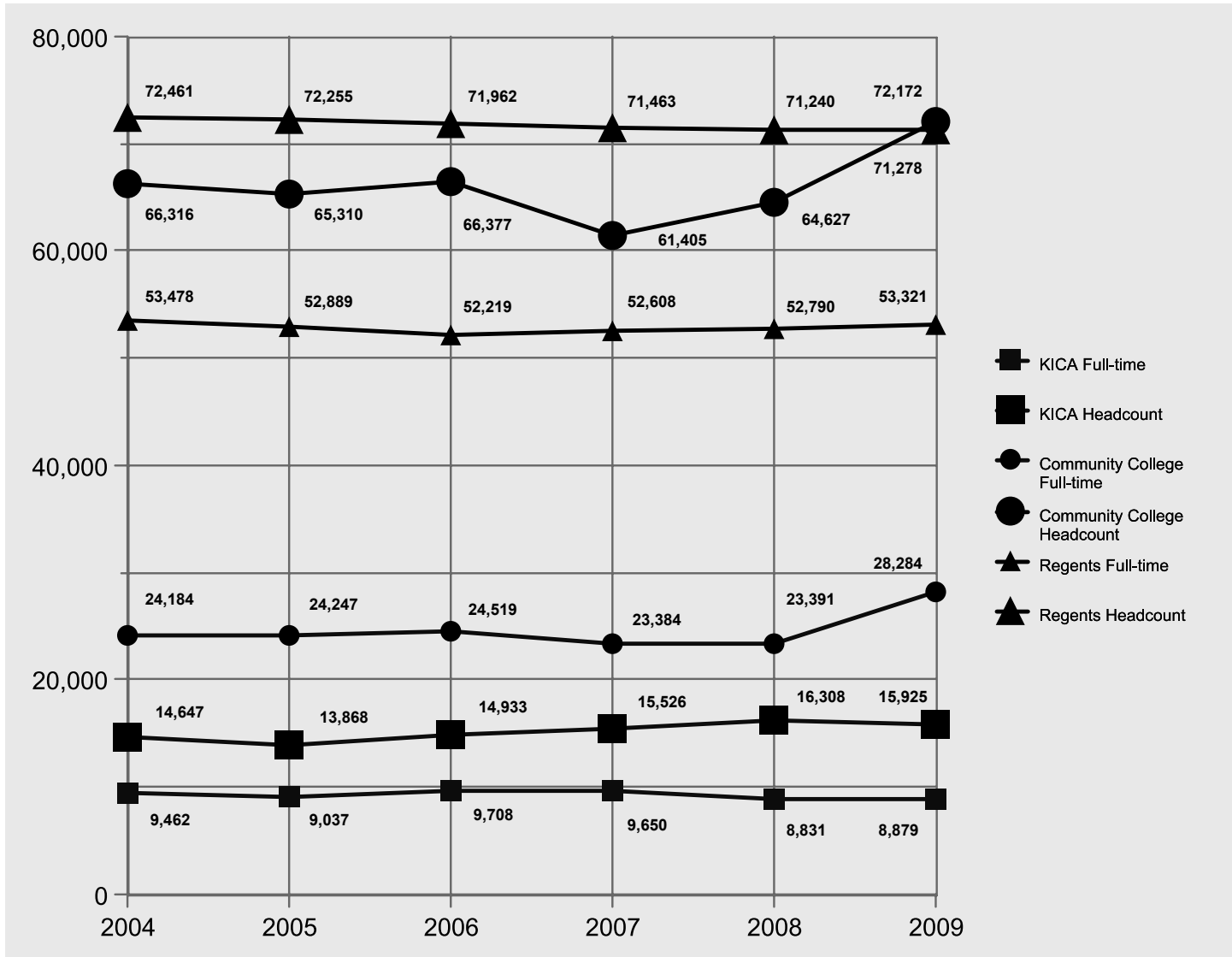
Source: Kansas Board of Regents Preliminary KHEER Enrollment Data



Kansas Resident Students by Sector

Fall 2004 - Fall 2009

source: KHEER data



Impact: Completion in Four Years

Percentage of Graduates Completing in Four Years

Independent College or University	4 years or less	5 years or less	6 years or less	Percentage completing in 4 yrs.
Baker University	100	42	5	68%
Benedictine College	102	19	12	77%
Bethany College	65	21	2	74%
Bethel College	54	8	1	86%
Central Christian College	20	2	n/a	91%
Donnelly College	n/a	n/a	n/a	n/a
Friends University	23	12	1	64%
Hesston College	n/a	n/a	n/a	n/a
Kansas Wesleyan University	24	4	1	83%
Manhattan Christian College	14	13	1	47%
McPherson College	26	11	2	52%
MidAmerica Nazarene University	74	38	9	61%
Newman University	40	10	2	69%
Ottawa University	35	9	1	78%
Southwestern College	47	11	1	80%
Sterling College	39	11	2	75%
Tabor College	38	4	3	79%
University of Saint Mary	18	9	n/a	67%
Avg. % of graduates completing in 4 yrs.				72%
Public University	4 years or less	5 years or less	6 years or less	Percentage completing in 4 yrs.
Emporia State University	154	133	27	49%
Fort Hays State University	151	155	35	43%
University of Kansas	1267	906	231	53%
Kansas State University	836	906	215	43%
Pittsburg State University	371	39	9	87%
Washburn University	91	79	51	41%
Wichita State University	184	185	77	41%
Avg. % of graduates completing in 4 yrs.				51%

(Source: IPEDS, 2007)

Impact: Economic

Institutional Finances

Kansas Independent College and University Finances

2007 – 2008

Source: IPEDS

Combined institutional operating budgets:	\$309 million
Total salary and wages:	\$133 million
Total benefits:	\$30 million

Total Economic Impact of Institutional Financial Activity

2007 - 2008

Source: IPEDS

Using a conservative multiplier of 2.00 and an operating base of \$472 million:	A minimum of \$944 million of economic benefit to the state
---	--

Institutional Assets

2007 - 2008

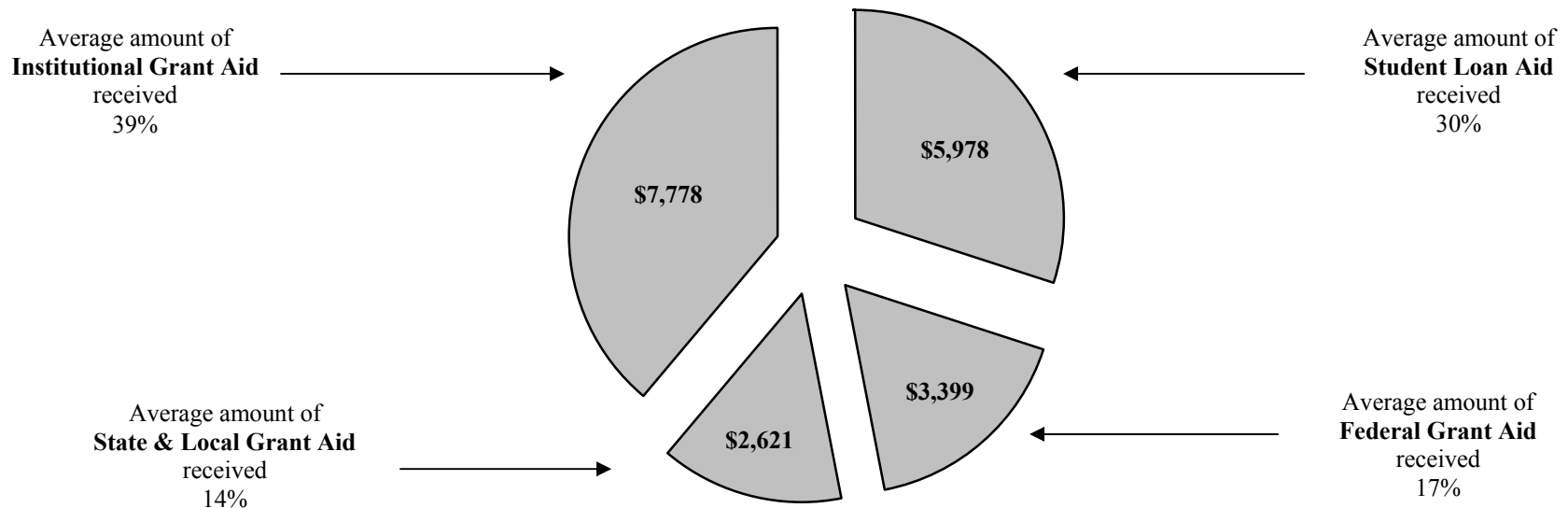
Source: IPEDS

Total endowment assets:	\$288 million
Total net assets:	\$535 million
Total equipment, building and land improvements:	\$606 million
Total assets:	\$1.43 billion

Impact: Kansas Comprehensive Grant

The major way in which the state of Kansas supports independent colleges is through the Kansas Comprehensive Grant received by students who attend these colleges. The program, enacted by the legislature in 1998, provides for grants of up to \$3,500 for high need Kansas resident students attending KICA colleges. This program, in combination with federal need-based aid primarily in the form of Pell Grants and grants and scholarships from the colleges, makes it possible for many students to attend whose families might otherwise not be able to afford the costs. Each component of the typical student aid package depicted below is essential to allowing a diversity of students access to an educational program matched to their educational needs and goals.

**Sources of All Aid (including loans)
for Kansas Independent College Students receiving aid
2007 - 2008**
Source: IPEDS



Impact: Cultural

The following is a small sample of current cultural and social benefits provided by our member institutions:

- Baker University:** The Maple Leaf Festival, the Quayle Bible Collection, Vespers and Voices of Spring concerts, various Artist and Lecture Series, the Loreine Collins Dietrich Distinguished Lecture Series, and the Old Castle Museum.
- Benedictine College:** Discovery Day, an annual symposium where students present projects and area high school students are invited to lectures by several guest speakers.
- Bethany College:** Oratorio Society's annual performance of Handel's "*Messiah*" and Bach's "*St. Matthew Passion*" during Holy Week and the Pearson Distinguished Professorship of Swedish Studies.
- Bethel College:** Fall Festival, Kauffman Museum, Kansas Institute for Peace and Conflict Resolution, Bethel College Academy of Performing Arts, and numerous concerts, performances, and lecture series open to the public.
- Central Christian College:** Chaney Music Symposium, Chaney Bible Lecture Series, and BG Products Lecture Series.
- Donnelly College:** Multicultural Fair sponsored by ESL students and the Organization of Student Leaders and Black History and Women's History speakers.
- Friends University:** Willard and Jean Garvey Lectureships in Law, Cornerstone weekly worship service, Symphony of Spring, Riney Fine Arts Gallery, and various ballet, jazz, and concert performances throughout the year.
- Hesston College:** Dyck Arboretum, the Hesston-Bethel Performing Arts Series, and vocalist Tony Brown (artist-in-residence).
- Kansas Wesleyan University:** Art exhibits and opportunities to interact with artists, vocal and instrumental concerts, Salina Fall Fest, Evans Photographic Collection, Ethics in Public Life Speaker Series, Christmas by Candlelight concert.
- McPherson College:** McPherson is the only accredited 4-year college in the U.S. that offers a degree in antique auto restoration. The college also hosts lecture series and theater productions and musical concerts. In addition, artifacts displays at the McPherson Museum include a saber tooth tiger skeleton from the LaBrea Tar Pits.
- Manhattan Christian College:** Woman's World, an annual retreat for women of all ages and professions promoting Christian education, fellowship, and inspiration.
- MidAmerica Nazarene University:** Free community presentation of Handel's "*Messiah*," performances by The Concert Band, Jazz Band, Concert Choir, Heritage Choir, World Music Ensembles, and the Cultural Events Series.
- Newman University:** The Steckline Gallery art series, the Gerber Institute for Catholic Studies, Chorale and Troubadours concerts, the History Speakers Series, and various other campus activities, events, and speakers.
- Ottawa University:** The President's Lecture Series, Christmas Vespers, and various arts and cultural events.
- Southwestern College:** Southwestern College Jazz Series, Southwestern Regional Big Band, South Kansas Symphony at Southwestern College, various college choral, band, jazz combo and theater performances throughout the year, Women's History Month, Black History Month, and Docking Lecture in Leadership & Public Affairs.
- Sterling College:** Black History Convocations, Rice County Prairie Art Show, Oscar Schmidt Lecture Series, various events pertinent to current cultural and social issues.
- Tabor College:** Handel's "*Messiah*" Community Christmas Concert and Martin Luther King Junior Day on campus.
- University of Saint Mary:** The Bernard H. Hall Abraham Lincoln Collection in De Paul Library, Lincoln Lecture Series, and Christmas Choral Vespers.

Financial Aid Information

Sources of Financial Aid by Sector

Sources: IPEDS, Kansas Board of Regents, and NAICU

FEDERAL PROGRAMS: 2007-2008

	<u>Public 4-year</u>	<u>Community Colleges</u>	<u>KICA Colleges</u>
Grants (e.g., Pell)	\$52,923,807	\$43,974,079	\$18,772,181
Loans	\$435,324,738	\$72,203,024	\$149,811,260

STATE PROGRAMS: 2008-2009

	<u>Public 4-year</u>	<u>Community Colleges</u>	<u>KICA Colleges</u>
Kansas Comprehensive Grant	7,068 recipients <i>\$7,545,411 awarded</i>	n/a <i>n/a</i>	3,006 recipients <i>\$8,144,467 awarded</i>
Kansas State Scholarship	916 recipients <i>\$862,568 awarded</i>	22 recipients <i>\$23,700 awarded</i>	303 recipients <i>\$292,500 awarded</i>
Kansas Nursing Service Scholarship	30 recipients <i>\$94,500 awarded</i>	77 recipients <i>\$225,250 awarded</i>	33 recipients <i>\$108,500 awarded</i>
Kansas Teacher Service Scholarship	336 recipients <i>\$1,206,072 awarded</i>	2 recipients <i>\$6,120 awarded</i>	81 recipients <i>\$295,290 awarded</i>
Kansas Ethnic Minority Scholarship	162 recipients <i>\$279,968 awarded</i>	20 recipients <i>\$35,541 awarded</i>	40 recipients <i>\$71,715 awarded</i>
National Guard Tuition Assistance	152 recipients <i>\$607,369 awarded</i>	78 recipients <i>\$98,654 awarded</i>	45 recipients <i>\$221,734 awarded</i>
TOTALS	8,664 recipients <i>\$10,595,888 awarded</i>	199 recipients <i>\$389,265 awarded</i>	3,508 recipients <i>\$9,134,206 awarded</i>

INSTITUTIONAL AID: 2007-2008

	<u>Public 4-year</u>	<u>Community Colleges</u>	<u>KICA Colleges</u>
Grants and Scholarships	\$52,710,476	\$15,303,939	\$80,671,456



Kansas Independent
College Association

Enrollment Trends: *Fall Headcounts*

Fall Headcount Enrollment at KICA Member Institutions: 2000 - 2009

Institution	2000	2001	2002	2003	2004	2005	2006	2007	2008	2009	5 Year Change	10 Year Change
Baker University	2817	2919	3058	3096	3145	3261	3932	3959	4112	3853	18.2%	36.8%
Benedictine College	1369	1348	1375	1330	1441	1508	1553	1842	1744	1877	24.5%	37.1%
Bethany College	606	619	621	631	586	588	554	537	587	592	0.7%	-2.3%
Bethel College	506	525	471	470	509	514	539	541	500	437	-15.0%	-13.6%
Central Christian College	277	314	338	320	324	336	349	362	397	466	38.7%	68.2%
Donnelly College	318	370	663	641	592	474	528	572	634	661	39.5%	107.9%
Friends University	3247	3190	3112	2887	2749	2798	2849	2831	2986	2853	2.0%	-12.1%
Hesston College	434	445	440	446	465	477	456	432	374	439	-8.0%	1.2%
Kansas Wesleyan University	747	784	806	805	825	897	894	864	879	852	-5.0%	14.1%
Manhattan Christian College	406	412	362	336	331	337	378	388	364	345	2.4%	-15.0%
McPherson College	463	397	379	435	480	484	503	543	595	629	30.0%	35.9%
MidAmerica Nazarene University	1717	1684	1825	1925	1985	1779	1823	1720	1743	1778	-0.5%	3.6%
Newman University	1967	2071	1929	2063	2179	2103	2104	2166	2435	2557	21.6%	30.0%
Ottawa University	4014	4592	3939	3779	3397	3218	3011	3369	3354	3192	-0.8%	-20.5%
Southwestern College	1143	1276	1306	1405	1420	1421	1557	1703	1823	1810	27.4%	58.4%
Sterling College	439	461	466	495	487	516	607	603	653	722	40.0%	64.5%
Tabor College	586	592	575	543	606	606	603	574	612	640	5.6%	9.2%
University of Saint Mary	766	772	891	881	824	817	837	882	955	1072	31.2%	40.0%
Total	21,822	22,771	22,556	22,488	22,345	22,134	23,077	23,888	24,747	24,775	11.9%	13.5%

Sources: Annual enrollment surveys of KICA Enrollment Officers and Registrars, Kansas Board of Regents, & Kansas Legislative Research Department.



Kansas Independent
College Association

Enrollment Trends: *Full-Time Fall Headcounts*

Full-Time Fall Headcount Enrollment at KICA Member Institutions: 2000 - 2009

Institution	2000	2001	2002	2003	2004	2005	2006	2007	2008	2009	5 Year Change	10 Year Change
Baker University	1595	1767	1826	1785	1755	1894	2392	1389	1516	1586	-16.3%	-0.6%
Benedictine College	861	910	1000	1013	1132	1218	1290	1298	1352	1502	23.3%	74.4%
Bethany College	545	571	566	579	559	552	509	512	555	574	4.0%	5.3%
Bethel College	455	482	435	435	477	476	495	512	475	416	-12.6%	-8.6%
Central Christian College	250	277	316	300	302	314	325	305	313	328	4.5%	31.2%
Donnelly College	104	184	319	323	299	277	257	290	296	291	5.1%	179.9%
Friends University	2819	2725	2540	2367	2262	2216	2274	2124	1892	1822	-17.8%	-35.4%
Hesston College	377	389	380	394	411	414	401	383	374	374	-9.7%	22.3%
Kansas Wesleyan University	546	528	593	634	599	679	711	674	691	668	-1.6%	-14.6%
Manhattan Christian College	301	290	262	256	261	275	301	291	278	257	-6.5%	-14.6%
McPherson College	414	362	341	386	424	426	468	498	509	542	27.2%	30.9%
MidAmerica Nazarene University	1301	1304	1452	1524	1495	1390	1329	1317	1335	1234	-11.2%	-5.1%
Newman University	1005	1027	1060	1200	1281	1237	1174	1128	1039	1122	-9.3%	11.6%
Ottawa University	1401	1679	2267	940	624	868	746	860	957	787	-9.3%	-43.9%
Southwestern College	660	584	659	690	572	586	601	592	583	597	1.9%	-9.5%
Sterling College	410	439	423	433	438	433	537	551	565	602	39.0%	46.8%
Tabor College	422	497	440	427	471	484	488	472	483	521	7.6%	23.5%
University of Saint Mary	349	351	373	410	425	409	451	460	509	543	32.8%	55.6%
Total	13,815	14,366	15,791	14,096	13,787	14,148	14,749	13,656	13,722	13,766	-2.7%	-0.4%

Sources: Annual enrollment surveys of KICA Enrollment Officers and Registrars, Kansas Board of Regents, & Kansas Legislative Research Department.



Kansas Independent
College Association

Enrollment Trends: *Part-Time Fall Headcounts*

Part-Time Fall Headcount Enrollment at KICA Member Institutions: 2000 - 2009

Institution	2000	2001	2002	2003	2004	2005	2006	2007	2008	2009	5 Year Change	10 Year Change
Baker University	1222	1152	1232	1311	1390	1367	1540	2570	2596	2267	68.8%	85.5%
Benedictine College	508	438	375	317	309	290	263	544	392	375	29.3%	-26.2%
Bethany College	61	48	55	52	27	36	45	25	32	18	-50.0%	-70.5%
Bethel College	51	43	36	35	32	38	44	29	25	21	-44.7%	-58.8%
Central Christian College	27	37	22	20	22	22	24	57	84	138	527.3%	411.0%
Donnelly College	214	186	344	318	293	197	271	282	338	370	87.8%	72.9%
Friends University	428	465	572	520	487	582	575	707	1094	1031	77.1%	140.9%
Hesston College	57	56	60	52	54	63	55	49	51	66	4.8%	15.8%
Kansas Wesleyan University	201	256	213	171	226	218	183	190	188	184	-15.6%	-8.5%
Manhattan Christian College	105	122	100	80	70	62	77	97	86	88	42.0%	-16.2%
McPherson College	49	35	38	49	56	58	35	45	86	87	50.0%	77.6%
MidAmerica Nazarene University	416	380	373	401	490	389	494	403	408	544	39.9%	30.8%
Newman University	962	1044	869	863	898	866	930	1038	1396	1435	65.7%	49.2%
Ottawa University	2613	2913	1672	2839	2773	2350	2265	2509	2397	2405	2.3%	-8.0%
Southwestern College	483	692	647	715	848	835	956	1111	1240	1213	45.3%	151.1%
Sterling College	29	22	43	62	49	83	70	52	88	120	44.6%	313.8%
Tabor College	164	95	135	116	135	122	115	102	129	119	-2.5%	-27.4%
University of Saint Mary	417	421	518	471	399	408	386	422	446	529	29.7%	26.9%
Total	8,007	8,405	7,304	8,392	8,558	7,986	8,328	10,232	11,076	11,010	37.9%	37.5%

Sources: Annual enrollment surveys of KICA Enrollment Officers and Registrars, Kansas Board of Regents, & Kansas Legislative Research Department.



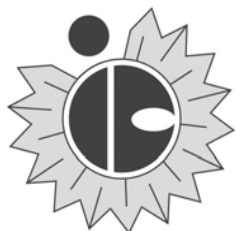
Kansas Independent
College Association

Enrollment Trends: *Fall FTE Enrollments*

Fall Full-Time Equivalent (FTE) Enrollment at KICA Member Institutions: 2000 - 2009

Institution	2000	2001	2002	2003	2004	2005	2006	2007	2008	2009	5 Year Change	10 Year Change
Baker University	2366	2492	2556	2593	2619	2748	3266	2888	2993	2938	6.9%	24.2%
Benedictine College	1027	1101	1169	1137	1253	1332	1393	1617	1608	1735	30.3%	1.0%
Bethany College	555	582	580	599	570	566	527	514	449	568	0.3%	2.3%
Bethel College	506	532	480	449	490	491	512	547	519	460	-6.3%	-9.1%
Central Christian College	258	290	326	308	311	314	334	330	319	364	15.9%	41.9%
Donnelly College	189	239	423	450	415	355	363	374	420	439	23.7%	132.3%
Friends University	3076	2761	2627	2577	2461	2449	2506	2332	2304	2144	-12.5%	-30.3%
Hesston College	399	409	396	414	432	439	425	400	390	402	-8.4%	0.8%
Kansas Wesleyan University	604	623	646	678	687	764	782	767	786	749	-2.0%	24.0%
Manhattan Christian College	331	326	262	287	289	298	267	322	310	286	-4.0%	-13.6%
McPherson College	449	396	378	399	446	449	482	546	572	601	33.9%	33.9%
MidAmerica Nazarene University	1532	1513	1662	1679	1684	1540	1519	1573	1603	1557	1.1%	1.6%
Newman University	1343	1422	1410	1537	1631	1574	1536	1601	1626	1745	10.9%	30.0%
Ottawa University	2314	2798	1782	2091	1679	1549	1380	1584	1617	1589	2.6%	-31.3%
Southwestern College	814	780	911	1016	960	911	975	857	906	908	-0.3%	11.5%
Sterling College	416	446	437	457	457	466	564	562	623	636	36.5%	52.9%
Tabor College	522	527	542	465	524	532	533	558	576	615	15.6%	17.8%
University of Saint Mary	586	587	654	592	580	567	600	686	955	793	39.9%	35.3%
Total	17,287	17,824	17,241	17,728	17,488	17,344	17,964	18,058	18,576	18,529	6.8%	7.2%

Sources: Annual enrollment surveys of KICA Enrollment Officers and Registrars, Kansas Board of Regents, & Kansas Legislative Research Department.



Kansas Independent
College Association

Enrollment Trends: *Fall Headcounts by Gender*

Total Fall Headcount Enrollment by Gender at KICA Member Institutions: 2001 - 2008

Institution	2001		2002		2003		2004		2005		2006		2007		2008		4 Yr. Change		8 Yr. Change	
	Men	Women	Men	Women	Men	Women	Men	Women	Men	Women	Men	Women	Men	Women	Men	Women	Men	Women	Men	Women
Baker U *	405	497	387	499	430	465	406	450	1382*	1879*	1570*	2362*	1446*	2513*	1537*	2575*	11.2%	37.0%	279.6%	418.0%
Benedictine C	659	680	667	708	647	682	703	738	725	783	752	801	860	969	840	1172	15.9%	49.7%	27.5%	72.3%
Bethany C	320	284	308	296	351	280	294	292	321	267	269	285	272	265	302	285	-5.9%	6.7%	-5.6%	0.4%
Bethel C	263	262	243	228	222	248	241	268	252	262	278	261	273	268	259	241	2.7%	-8.0%	-1.5%	-8.0%
Central Christian C	150	164	156	181	153	167	157	167	153	173	180	169	192	172	193	197	26.1%	13.9%	28.6%	20.1%
Donnelly C	89	281	153	279	214	427	210	382	156	318	179	349	185	387	191	443	22.4%	39.3%	114.6%	57.7%
Friends U	1401	1789	1340	1772	1215	1672	1144	1605	1131	1667	1138	1711	1157	1669	1142	1585	1.0%	-4.9%	-18.5%	-11.4%
Hesston C	235	210	209	233	199	246	221	244	239	238	206	256	169	263	193	230	-19.2%	-3.4%	-17.9%	9.5%
Kansas Wesleyan U	306	478	314	492	336	469	314	511	347	550	384	510	383	481	370	509	6.6%	-7.5%	20.9%	6.5%
Manhattan Christian C	184	228	172	190	172	164	159	172	169	168	169	142	213	175	197	167	16.6%	-0.6%	7.1%	-26.7%
McPherson C	209	188	212	167	256	163	286	194	299	185	304	199	320	224	333	262	11.4%	41.6%	59.3%	39.3%
MidAmerica Nazarene U	704	979	777	1048	788	1137	846	1139	773	1006	752	1071	682	1038	695	1048	-10.1%	4.2%	0.1%	7.0%
Newman U	675	1396	669	1260	728	1335	796	1383	777	1326	753	1351	741	1425	835	1600	7.5%	20.7%	23.7%	14.6%
Ottawa U	285	215	267	217	295	239	239	208	251	195	204	178	266	223	295	258	17.5%	32.3%	3.5%	20.0%
Southwestern C	634	642	652	638	744	661	731	686	692	724	779	778	913	790	1029	794	48.7%	9.7%	62.3%	23.7%
Sterling C	220	241	220	246	242	253	248	239	264	252	334	273	337	266	339	314	28.4%	24.6%	54.1%	30.3%
Tabor C	284	308	275	300	280	263	299	307	309	297	316	287	284	290	301	311	-2.6%	4.7%	6.0%	1.0%
U of Saint Mary	239	533	304	587	325	556	306	518	300	517	307	530	307	575	324	631	8.0%	22.0%	35.6%	18.4%
Total	7,262	9,375	7,325	9,341	7,597	9,427	7,600	9,503	8,540	10,807	8,874	11,513	9,000	11,993	9,375	12,622	9.8%	16.8%	29.1%	34.6%
Percent Women	56.4%		56.1%		55.4%		55.6%		55.9%		56.5%		57.1%		57.4%					

Source: Integrated Postsecondary Education Data System, Fall Enrollment Surveys

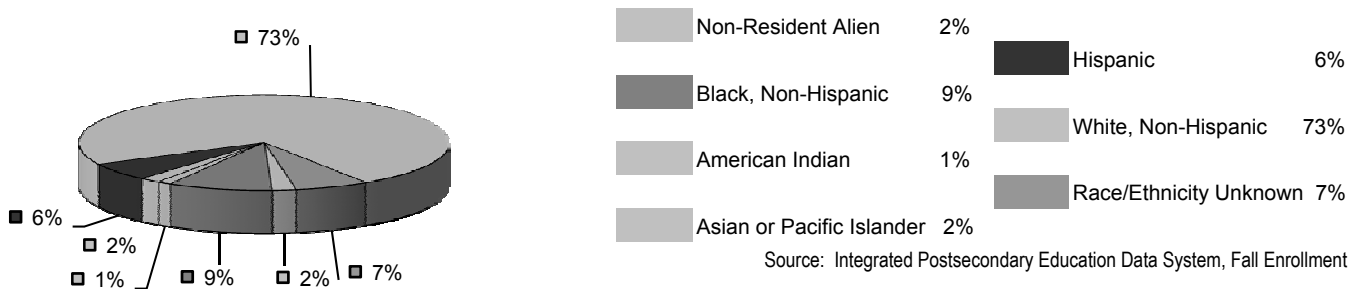
* Note: Prior to the 2006-2007 IPEDS collection cycle, Baker University had three separate reporting units: College of Arts and Sciences, School of Nursing, and the School of Professional and Graduate Studies. In January of 2006, Baker University created the School of Education. Beginning with that collection cycle, IPEDS issued the university one ID number. So, the 2005, 2006, 2007, and 2008 figures represent the totals from all four schools. Previously, the totals included only the students at the Colleges of Arts and Sciences in Baldwin City, KS.



Enrollment Trends: *Undergraduate by Ethnicity*

Total Undergraduate Enrollment by Ethnicity at KICA Member Institutions: Fall 2008

Institution	Non-Resident Alien	Black, Non Hispanic	American Indian	Asian or Pacific Islander	Hispanic	White, Non-Hispanic	Race/Ethnicity Unknown	Total	Change from Previous Yr.
Baker University	8	199	26	32	63	1655	166	2,149	5.5%
Benedictine College	30	59	7	11	87	1478	275	1,947	11.3%
Bethany College	31	65	5	8	39	424	3	575	7.1%
Bethel College	49	27	7	7	25	385	0	500	-7.6%
Central Christian College	5	34	8	8	22	309	4	390	7.1%
Donnelly College	51	283	8	29	197	65	1	634	10.9%
Friends University	0	167	31	25	91	1497	335	2,146	-3.5%
Hesston College	39	20	2	2	16	336	0	415	-3.9%
Kansas Wesleyan University	32	74	8	10	63	631	0	818	2.0%
Manhattan Christian College	7	19	3	3	10	313	9	364	-6.2%
McPherson College	3	50	13	12	38	461	18	595	9.4%
MidAmerica Nazarene University	14	133	8	17	46	1067	20	1,305	0.8%
Newman University	50	61	34	89	156	1408	17	1,815	16.4%
Ottawa University	1	110	8	6	21	392	15	553	13.1%
Southwestern College	27	153	19	33	87	1092	212	1,623	5.0%
Sterling College	7	51	14	9	36	522	14	653	8.3%
Tabor College	11	39	5	8	30	497	11	601	4.7%
University of Saint Mary	1	74	8	6	46	474	42	651	9.8%
Total	366	1,618	214	315	1,073	13,006	1,142	17,734	
Previous Year's Total	407	1,490	205	267	1,011	12,604	867	16,851	
Change from Previous Yr. Total	-10.1%	8.6%	4.4%	18.0%	6.1%	3.2%	31.8%	5.2%	



Source: Integrated Postsecondary Education Data System, Fall Enrollment Survey



Kansas Independent
College Association

Degrees Awarded: *Totals for KICA*

Total Degrees Awarded by KICA Member Institutions: 2008*

Institution	Associate's	Bachelor's	Master's	First		Total: 2008		Previous Yr. Total: 2007	
				Professional	Doctorate	All Degrees	4-Year Degrees and Above	All Degrees	4-Year Degrees and Above
Baker University	90	439	838	0	14	1381	1291	1290	1203
Benedictine College	0	269	50	0	0	319	319	340	340
Bethany College	0	114	0	0	0	114	114	121	121
Bethel College	0	142	0	0	0	142	142	125	125
Central Christian College	23	62	0	0	0	85	62	80	46
Donnelly College	42	5	0	0	0	47	5	50	0
Friends University	37	658	287	0	0	982	945	954	909
Hesston College	148	0	0	0	0	148	0	158	0
Kansas Wesleyan University	0	196	67	0	0	263	263	218	217
Manhattan Christian College	5	84	0	0	0	89	84	57	54
McPherson College	0	141	0	0	0	141	141	106	105
MidAmerica Nazarene University	21	346	236	0	0	603	582	594	593
Newman University	45	268	141	0	0	454	409	469	406
Ottawa University	0	90	0	0	0	90	90	82	82
Southwestern College	0	501	102	0	0	603	603	540	540
Sterling College	0	61	0	0	0	61	61	78	78
Tabor College	0	149	0	0	0	149	149	154	153
University of Saint Mary	1	123	150	0	0	274	273	234	234
KICA Institutions	412	3,648	1,871	0	14	5,945	5,533	5,650	5,206
State Institutions	7,079	14,031	4,338	473	798	26,719	19,640	26,371	19,577
KICA Institutions as a Percent of State Total	5.5%	20.6%	30.1%	0.0%	1.7%	18.2%	22.0%	17.7%	21.0%

Source: Integrated Postsecondary Education Data System, Degrees/Awards Survey 2006 and 2007.

* All degrees conferred between July 1, 2007 and June 30, 2008 and includes 1st and 2nd majors.



Kansas Independent
College Association

Degrees Awarded:

KICA Compared to State Institutions

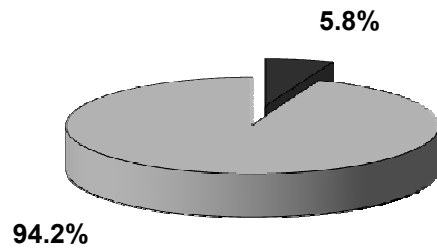
Total Degrees Awarded in 2008 by KICA Member Institutions in Relation to Degrees Awarded by State Institutions

Data from page 17 used for charts

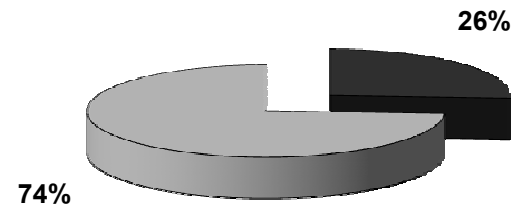
■ KICA Institutions

■ State Institutions

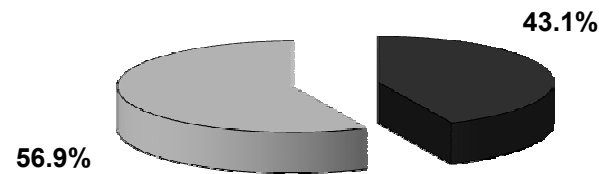
Associate's Degrees



Bachelor's Degrees



Master's Degrees





Kansas Independent
College Association

Degrees Awarded: *Bachelor's Degrees in Education*

Bachelor's Degrees in Education Awarded by KICA Member Institutions: 2002 - 2008*

Institution	2002-03	2003-04	2004-05	2005-06	2006-07	2007-08	3 Year Change	6 Year Change
Baker University	16	14	20	30	28	21	-30.0%	31.3%
Benedictine College	54	34	32	45	47	41	-8.8%	-24.1%
Bethany College	32	43	34	29	27	26	-10.3%	-18.7%
Bethel College	10	11	7	5	10	8	60.0%	-20.0%
Central Christian College	0	0	0	0	0	0	0.0%	0.0%
Donnelly College	0	0	0	0	0	0	0.0%	0.0%
Friends University	39	48	38	33	31	22	-33.3%	-43.9%
Hesston College	0	0	0	0	0	0	0.0%	0.0%
Kansas Wesleyan University	13	17	12	15	6	16	6.6%	23.1%
Manhattan Christian College	0	0	0	0	0	0	0.0%	0.0%
McPherson College	13	10	6	3	8	9	200.0%	-30.8%
MidAmerica Nazarene University	45	36	39	25	29	29	16.0%	-35.6%
Newman University	64	78	77	58	70	60	3.4%	-6.3%
Ottawa University	9	8	16	7	12	14	100.0%	55.6%
Southwestern College	19	23	17	16	23	37	131.3%	94.7%
Sterling College	22	16	22	9	10	8	-11.1%	-63.6%
Tabor College	19	30	21	22	22	17	-22.7%	-10.5%
University of Saint Mary	23	17	14	13	5	13	0.0%	-43.5%
KICA Institutions	378	385	355	310	328	321	3.6%	-15.1%
State Institutions	1,371	1,386	1,306	1,281	1,324	1,333	4.1%	-2.8%
KICA Institutions as a Percent of State Total	21.6%	21.7%	21.4%	19.5%	19.9%	19.4%		

Source: Integrated Postsecondary Education Data System, Completions Survey

* Students often receive degrees in two majors. Data for both first and second majors is included.



Kansas Independent
College Association

Degrees Awarded: *Bachelor's Degrees in Health Professions (primarily Nursing)*

Bachelor's Degrees in Health Professions (primarily Nursing) Awarded by KICA Member Institutions: 2002 - 2008

Institution	2002-03	2003-04	2004-05	2005-06	2006-07	2007-08	3 Year Change	6 Year Change
Baker University	41	54	60	67	67	69	3.0%	68.3%
Benedictine College*	0	1	1	1	3	3	n/a	n/a
Bethany College*	4	3	1	2	2	4	n/a	n/a
Bethel College	12	13	30	34	43	47	38.2%	291.6%
Central Christian College*	0	0	1	1	0	0	n/a	n/a
Donnelly College	n/a	n/a	n/a	n/a	n/a	n/a	n/a	n/a
Friends University*	0	0	0	1	0	4	n/a	n/a
Hesston College	n/a	n/a	n/a	n/a	n/a	n/a	n/a	n/a
Kansas Wesleyan University	8	6	6	3	13	34	1033.3%	325.0%
Manhattan Christian College	n/a	n/a	n/a	n/a	n/a	n/a	n/a	n/a
McPherson College	n/a	n/a	n/a	n/a	n/a	n/a	n/a	n/a
MidAmerica Nazarene University	23	19	30	39	34	38	-2.6%	65.2%
Newman University	52	55	69	73	62	48	-34.3%	-7.7%
Ottawa University*	1	1	0	0	0	1	n/a	n/a
Southwestern College	33	40	31	33	21	23	-30.3%	-30.3%
Sterling College*	2	2	0	2	2	1	n/a	n/a
Tabor College	10	9	15	23	21	25	8.7%	150.0%
University of Saint Mary	n/a	n/a	n/a	n/a	n/a	32	n/a	n/a
KICA Institutions	145	149	184	279	268	329	17.9%	126.9%
State Institutions	595	605	741	769	1,069	1,131	47.1%	90.1%
KICA Institutions as a Percent of State Total	19.6%	19.8%	19.9%	26.6%	20.0%	22.5%		

Source: Integrated Postsecondary Education Data System, Completions Survey. Degrees are 1st and 2nd majors in health professions and related clinical sciences (CIP Code 51)

* Note: Degrees awarded were non-nursing.



Kansas Independent
College Association

Affordability & Financing: *Tuition and Fees*

Tuition and Fees (Resident, Full-Time, Undergraduate) at KICA Member Institutions: 2000 - 2001 to 2009 - 2010

Institution	2000-01	2001-02	2002-03	2003-04	2004-05	2005-06	2006-07	2007-08	2008-09	2009-10	10 yr. Avg.	5 Year	10 Year
											Ann. Incr.	Change	Change
Baker University	12,380	12,980	13,670	14,550	15,550	16,480	17,580	18,830	19,965	21,130	6.1%	28.2%	70.7%
Benedictine College	12,390	12,995	13,400	14,613	15,126	15,760	17,120	17,700	18,800	19,500	5.2%	23.7%	57.4%
Bethany College	12,349	12,945	13,590	14,140	15,010	15,460	16,210	17,110	18,124	19,065	4.9%	23.3%	54.4%
Bethel College	11,800	12,300	13,000	13,900	14,700	15,550	16,700	17,800	18,900	19,990	6.0%	28.6%	69.4%
Central Christian College	10,600	11,100	11,700	12,500	13,124	13,600	14,500	15,300	16,000	17,000	5.4%	25.0%	60.4%
Donnelly College	3,400	3,570	3,570	3,780	3,840	4,480	4,660	4,940	5,438	5,650	5.9%	26.1%	66.2%
Friends University	11,620	12,250	12,935	13,750	14,560	15,270	16,170	17,220	18,320	19,080	5.7%	25.0%	64.2%
Hesston College	11,700	12,196	12,938	13,798	14,598	15,370	16,496	17,416	18,738	19,906	6.1%	29.5%	70.1%
Kansas Wesleyan University	11,800	12,600	13,400	14,200	15,000	15,800	16,600	17,400	18,200	19,200	5.6%	21.5%	62.7%
Manhattan Christian College	6,870	7,558	7,936	7,966	8,996	9,638	10,134	10,854	11,374	11,944	6.4%	24.0%	73.9%
McPherson College	11,700	12,720	13,345	14,090	14,645	15,160	15,775	16,400	17,200	18,400	5.2%	21.4%	57.3%
MidAmerica Nazarene University	11,066	11,638	12,280	12,910	13,630	14,754	15,968	17,090	18,216	19,146	6.3%	29.8%	73.0%
Newman University	10,148	11,060	12,010	13,198	14,830	15,822	17,308	17,988	18,997	19,700	7.7%	24.5%	94.1%
Ottawa University	10,960	11,800	12,450	13,060	14,150	14,800	15,850	17,350	18,420	19,450	6.6%	31.4%	77.5%
Southwestern College	11,300	13,076	13,922	14,618	15,350	16,218	16,900	17,820	18,700	19,680	6.4%	21.3%	74.2%
Sterling College	11,582	12,100	12,750	13,300	13,907	13,906	14,500	15,500	16,500	18,000	5.0%	29.4%	55.4%
Tabor College	12,410	12,300	13,634	14,350	15,120	15,944	16,744	17,640	18,710	18,310	4.5%	14.8%	47.5%
University of Saint Mary	12,070	12,312	13,128	13,734	14,590	15,590	16,410	17,270	18,080	18,950	5.1%	21.6%	57.0%
Avg. KICA Tuition/Fees	\$10,897	\$11,528	\$12,203	\$12,914	\$13,707	\$14,422	\$15,313	\$16,202	\$17,149	\$18,006	5.7%	24.8%	65.2%
Avg. KICA Tuition/Fees: 4 yr. Institutions	\$11,315	\$11,983	\$12,697	\$13,430	\$14,268	\$14,958	\$15,904	\$16,830	\$17,782	\$18,659	5.7%	24.7%	64.9%
KICA Ann. Increase from Previous Yr.	5.2%	5.8%	5.9%	5.8%	6.1%	5.2%	6.2%	5.8%	5.8%	5.0%			
Avg. State 4-Yr. Institution Ann. Increase	6.3%	3.2%	11.6%	14.8%	12.7%	9.5%	9.0%	7.1%	6.2%	5.0%			

Sources: Annual KICA Tuition and Fees Survey, the Kansas Board of Regents, and Washburn University.

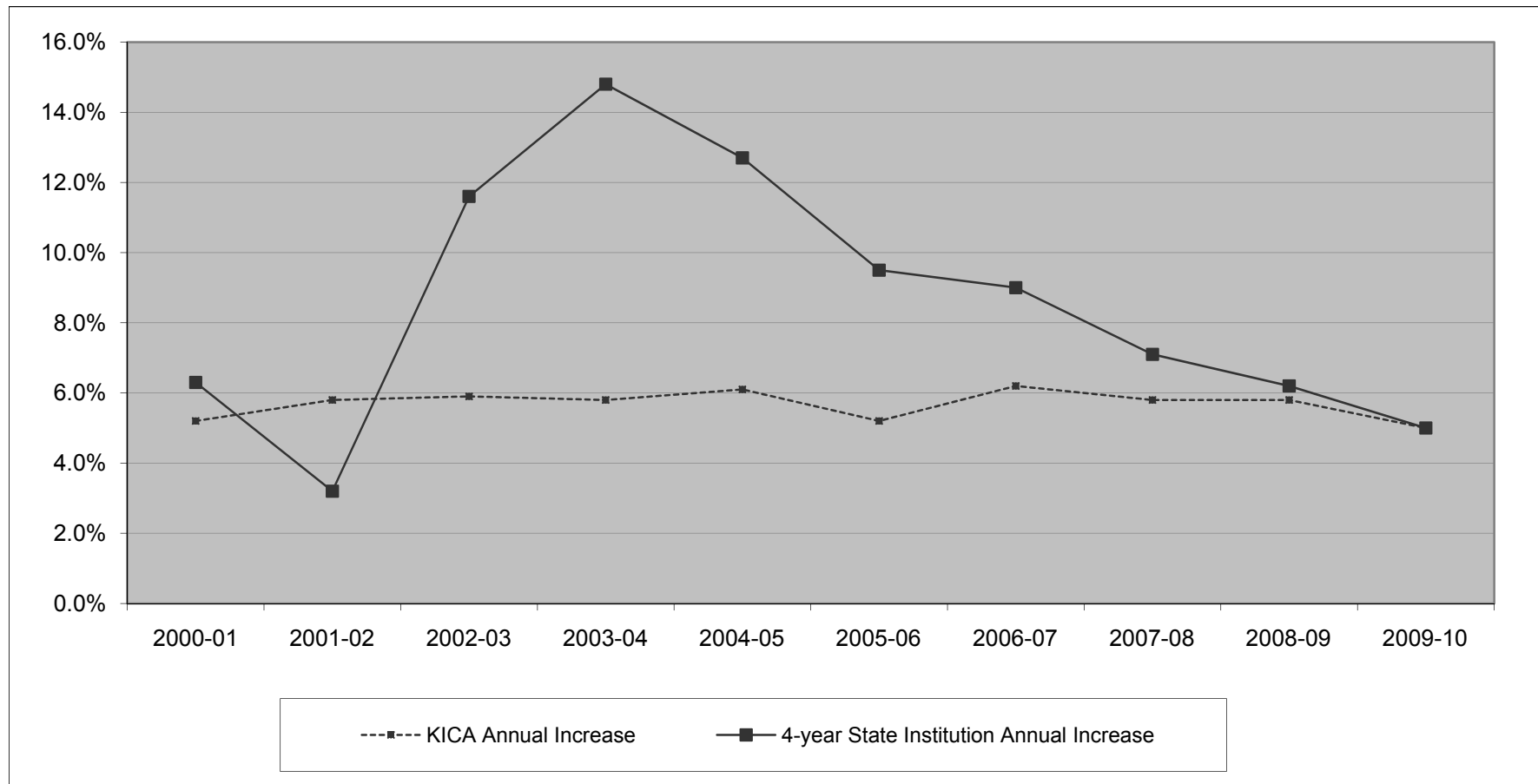


Kansas Independent
College Association

Affordability & Financing: *Tuition Increases*

Annual Tuition Increases for KICA Member Institutions and State Institutions: 2000 - 2001 to 2009 - 2010

Data from page 21 used for chart





Kansas Independent
College Association

Affordability & Financing: *Financial Aid Packages*

Financial Aid Packages Awarded to First-Year Students at KICA member Institutions: 2007 - 2008 *

Institution	# of students in cohort	% receiving aid	Federal Grant Aid			State Grant Aid			Institutional Grant Aid			Student Loan Aid		
			% receiving aid **	Avg. grant award	% of 07-08 tuition	% receiving aid **	Avg. grant award	% of 07-08 tuition	% receiving aid **	Avg. grant award	% of 07-08 tuition	% receiving loans **	Avg. loan	% of 07-08 tuition
Baker University	250	100%	22%	\$3,439	18%	52%	\$3,068	16%	94%	\$11,250	60%	89%	\$5,663	30%
Benedictine College	363	100%	23%	\$3,928	23%	17%	\$3,023	18%	100%	\$9,143	54%	77%	\$8,630	51%
Bethany College	128	100%	39%	\$3,223	19%	27%	\$2,773	16%	100%	\$8,958	53%	84%	\$5,060	30%
Bethel College	106	98%	26%	\$3,892	22%	31%	\$3,128	18%	98%	\$10,241	58%	66%	\$4,548	16%
Central Christian College	83	98%	36%	\$3,619	24%	16%	\$3,000	20%	96%	\$6,371	42%	72%	\$6,608	44%
Donnelly College	39	98%	63%	\$3,879	79%	43%	\$1,404	29%	60%	\$1,811	37%	18%	\$2,658	54%
Friends University	129	96%	45%	\$3,722	22%	33%	\$2,814	17%	85%	\$7,324	43%	75%	\$5,378	32%
Hesston College	174	100%	33%	\$4,101	24%	21%	\$2,664	16%	100%	\$8,237	48%	72%	\$6,290	37%
Kansas Wesleyan University	110	100%	34%	\$2,462	14%	37%	\$2,584	15%	100%	\$7,472	43%	87%	\$6,958	40%
Manhattan Christian College	73	99%	68%	\$868	8%	49%	\$2,795	27%	97%	\$3,611	35%	81%	\$4,711	45%
McPherson College	132	99%	28%	\$3,742	23%	22%	\$2,745	17%	98%	\$9,453	59%	67%	\$8,207	51%
MidAmerica Nazarene University	214	99%	28%	\$3,538	22%	25%	\$2,734	17%	98%	\$7,833	49%	77%	\$6,175	38%
Newman University	131	98%	24%	\$3,454	20%	27%	\$2,639	15%	98%	\$10,500	59%	53%	\$6,610	37%
Ottawa University	161	100%	65%	\$4,372	26%	32%	\$1,812	11%	100%	\$9,573	56%	81%	\$5,675	33%
Southwestern College	138	100%	32%	\$3,204	18%	35%	\$2,742	15%	100%	\$8,642	49%	73%	\$6,177	35%
Sterling College	138	100%	47%	\$3,521	24%	22%	\$2,309	15%	100%	\$6,831	46%	96%	\$6,881	46%
Tabor College	103	86%	43%	\$3,576	21%	38%	\$2,644	15%	86%	\$5,149	30%	75%	\$5,599	32%
University of Saint Mary	65	98%	23%	\$2,650	16%	29%	\$2,296	14%	97%	\$7,608	45%	77%	\$5,780	34%
	2,537	98.3%	37.7%	\$3,399		30.9%	\$2,621		94.8%	\$7,778		73.3%	\$5,978	

Source: 2008 IPEDS Student Financial Aid Survey.

* Full-time, first-time degree/certificate seeking students who received any financial aid. ** Expressed as a percent of all full-time, first-time degree/certificate seeking students.



Kansas Independent
College Association

Affordability & Financing: *Institutional Aid*

Institutional Aid Awards at KICA Member Institutions: FY 2004 - FY 2008

Institution	FY 2003-2004		FY 2004-2005		FY 2005-2006		FY 2006-2007		FY 2007-2008		5 Year Change	
	Unfunded	Total	Unfunded	Total	Unfunded	Total	Unfunded	Total	Unfunded	Total	Unfunded	Total
Baker University	5,891,047	6,074,293	6,232,805	6,513,129	7,457,781	7,640,792	8,457,298	11,074,100	8,920,229	11,939,794	51.4%	96.6%
Benedictine College	6,402,205	6,522,205	8,005,373	8,125,373	8,380,676	8,500,676	9,334,086	11,634,323	10,733,962	13,275,310	67.7%	103.5%
Bethany College	2,825,312	3,326,434	2,493,612	3,094,040	2,407,061	3,039,281	2,250,677	4,215,833	2,695,685	4,755,515	-4.6%	43.0%
Bethel College	1,885,878	2,154,951	2,173,578	2,469,975	2,505,236	2,846,859	2,847,649	4,500,153	3,290,742	5,112,933	74.5%	137.3%
Central Christian College	1,002,361	1,141,854	1,136,744	1,359,957	1,581,169	1,754,674	1,824,237	2,759,834	1,824,126	2,725,634	82.0%	138.7%
Donnelly College	0	278,078	17,285	280,351	18,569	230,232	12,668	1,459,796	21,607	1,591,509	n/a	472.3%
Friends University	3,316,000	3,768,000	3,758,000	4,484,000	4,260,000	5,102,000	4,254,000	8,918,719	5,251,700	9,999,900	58.4%	165.4%
Hesston College	2,156,254	2,441,569	2,468,906	2,619,793	2,519,045	2,682,131	1,996,768	3,504,314	2,011,418	3,760,132	-0.1%	54.0%
Kansas Wesleyan University	3,040,796	3,324,669	3,211,776	3,495,966	4,032,195	4,385,894	4,210,354	6,305,235	3,996,145	6,163,657	31.4%	85.4%
Manhattan Christian College	551,406	626,517	582,410	662,108	688,034	766,998	701,454	1,319,721	672,347	1,377,608	22.0%	120.0%
McPherson College	1,050,029	2,945,697	1,200,059	3,259,052	1,267,198	3,330,736	1,743,232	5,070,926	2,073,439	5,476,983	97.5%	85.9%
MidAmerica Nazarene University	4,549,743	4,955,306	4,781,313	5,191,313	4,174,017	4,586,874	4,784,638	6,762,548	5,740,918	7,820,911	26.2%	57.8%
Newman University	5,310,304	5,441,159	5,852,022	6,007,643	6,275,006	6,534,974	6,920,313	9,372,143	6,984,627	9,596,562	31.5%	76.4%
Ottawa University	2,484,323	2,792,628	2,232,275	2,518,905	2,389,310	2,655,916	2,360,044	4,593,470	3,780,312	6,367,500	52.2%	128.0%
Southwestern College	3,321,453	3,578,778	3,477,546	3,818,311	3,389,907	3,786,732	3,143,435	5,709,522	5,215,372	7,684,447	57.0%	114.7%
Sterling College	2,987,017	3,095,530	3,145,990	3,256,445	2,984,866	3,064,060	3,724,663	4,956,597	3,826,181	5,288,278	28.1%	70.8%
Tabor College	2,298,782	2,590,081	2,812,965	3,102,370	3,187,608	3,450,980	3,265,099	4,606,833	3,327,156	4,756,728	44.7%	83.7%
University of Saint Mary	1,751,195	1,751,195	1,578,426	1,578,426	1,336,883	1,379,559	1,484,204	2,380,127	1,707,462	2,488,739	-2.5%	42.1%
Institutional Aid Awards Total	\$50,824,105	\$56,808,944	\$55,161,085	\$61,837,157	\$58,854,561	\$65,739,368	\$63,314,819	\$99,144,194	\$72,073,428	\$110,182,140	41.8%	94.0%
Average Total Awards	\$2,823,561	\$3,156,052	\$3,064,504	\$3,435,398	\$3,269,698	\$3,652,187	\$3,517,490	\$5,508,011	\$4,004,079	\$6,121,230		
Average Annual Increase	19.2%	10.3%	8.5%	8.9%	6.7%	6.3%	7.6%	50.8%	13.8%	11.1%		

Source: IPEDS Finance Survey

Note: Unfunded aid represents expenditures for grants to students that are taken as direct discounts on tuition and fees. Institutional grants (funded) include the amounts awarded to students from institutional resources restricted for the purpose of student aid, such as scholarships funded by gifts or endowment return restricted for that purpose.

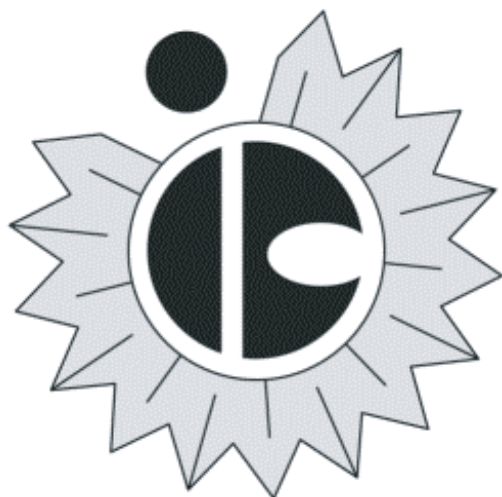


Affordability & Financing: *Total Economic Impact*

Direct Economic Impact of KICA Member Institutions: FY2008

Institution	Expenditures for Salary and Wages	Expenditures for Employee Benefits	Number of Employees	Institutional Expenditures (all categories)	Local Economic Impact *
Baker University	\$17,837,251	\$3,206,915	728	\$39,854,588	\$79,709,176
Benedictine College	\$9,388,275	\$2,380,999	279	\$23,695,758	\$47,391,516
Bethany College	\$4,889,773	\$905,114	176	\$12,899,250	\$25,798,500
Bethel College	\$5,396,483	\$1,622,357	161	\$12,621,864	\$25,243,728
Central Christian College	\$1,759,417	\$726,633	106	\$5,584,282	\$11,168,564
Donnelly College	\$1,776,211	\$355,242	90	\$3,864,859	\$7,729,718
Friends University	\$16,716,066	\$3,236,390	596	\$34,116,000	\$68,232,000
Hesston College	\$4,682,023	\$991,182	147	\$10,043,476	\$20,086,952
Kansas Wesleyan University	\$4,656,886	\$1,173,673	140	\$11,186,564	\$22,373,128
Manhattan Christian College	\$2,029,018	\$412,565	77	\$5,229,652	\$10,459,304
McPherson College	\$4,902,291	\$1,020,878	128	\$12,552,160	\$25,104,320
MidAmerica Nazarene University	\$12,139,093	\$3,283,461	450	\$27,584,193	\$55,168,386
Newman University	\$9,436,346	\$2,050,575	324	\$20,163,260	\$40,326,520
Ottawa University	\$14,292,499	\$3,449,342	148	\$32,137,006	\$64,274,012
Southwestern College	\$8,891,250	\$1,693,113	265	\$22,172,682	\$44,345,364
Sterling College	\$4,350,352	\$978,403	127	\$11,283,635	\$22,567,270
Tabor College	\$3,515,936	\$1,166,848	189	\$10,994,485	\$21,988,970
University of Saint Mary	\$5,850,847	\$1,435,641	226	\$13,016,646	\$26,033,292
KICA Total	\$132,510,017	\$30,089,331	4,357	\$309,000,360	\$618,000,720

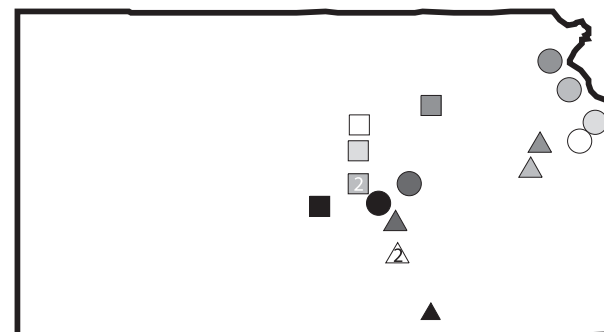
Source: IPEDS, 2008. * Local economic impact is a standard economic expression derived by multiplying an institution's total expense by a computed multiplier. The average multiplier for Kansas is 2.00. The concept of a multiplier effect is based on the impact of the spending of each dollar has throughout the local economy. In this usage, the spending of each dollar results in additional spending of (or attraction of) \$2.00 dollars.



Kansas Independent College Association

Kansas Independent College Association
 700 South Kansas Avenue, Topeka, Kansas 66603
 Phone: 785-235-9877 Fax: 785-235-1437
www.kscolleges.org

Member College and University Locations



- **MidAmerica Nazarene University** *Olathe*
- **Donnelly College** *Kansas City, KS*
- **University of Saint Mary** *Leavenworth*
- **Benedictine College** *Atchison*
- **Tabor College** *Hillsboro*
- **Hesston College** *Hesston*
- **Kansas Wesleyan University** *Salina*
- **Bethany College** *Lindsborg*
- **Central Christian College** *McPherson*
- **McPherson College** *McPherson*
- **Manhattan Christian College** *Manhattan*
- **Sterling College** *Sterling*
- △ **Friends University** *Wichita*
- △ **Newman University** *Wichita*
- △ **Ottawa University** *Ottawa*
- ▲ **Baker University** *Baldwin City*
- ▲ **Bethel College** *North Newton*
- ▲ **Southwestern College** *Winfield*